

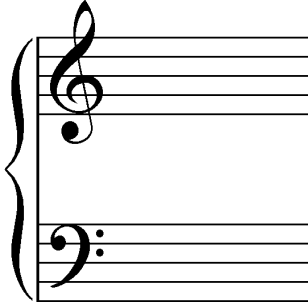
Notes on the Grand Staff

The **Grand Staff** is used by piano and other keyboard instruments that require two hands. The two staves are joined by a **brace** on the left hand side. Generally the right hand plays the upper staff and the left hand plays the lower.

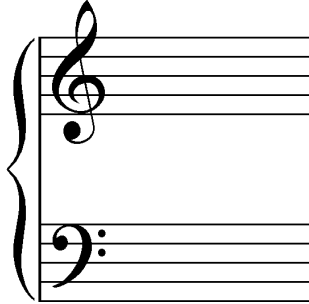


but it is the *same note* in either case

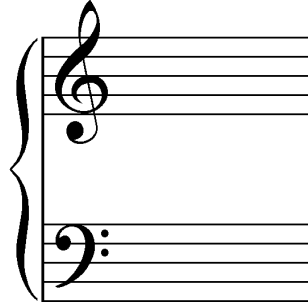
Draw middle C for the treble staff:



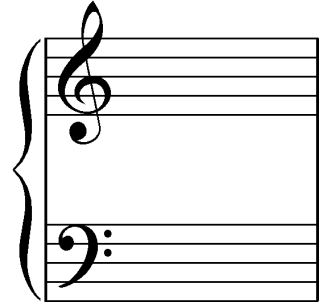
Draw middle C for the bass staff:



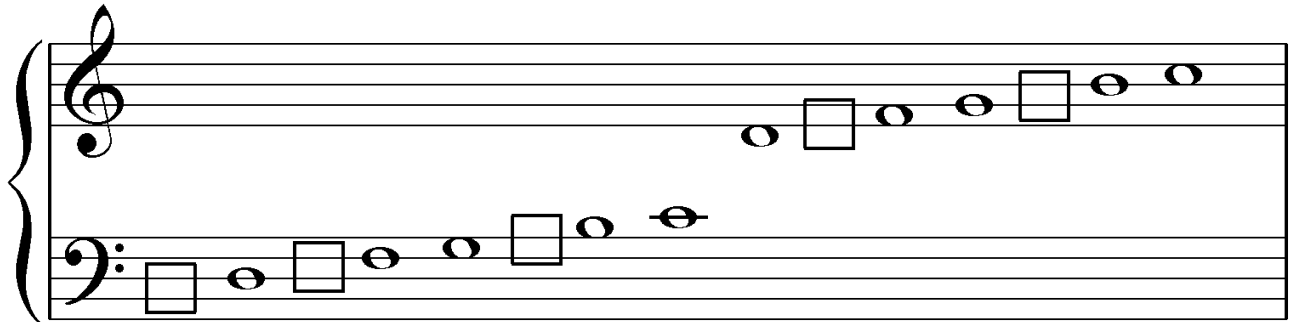
Draw middle C for the right hand to play:



Draw middle C for the left hand to play:



Fill in the gaps and name all these notes:



_____ B C D _____

What is the symbol to the left hand side of the two staves called? _____

Trace and draw the braces on the side, then add clefs to these grand staves:

