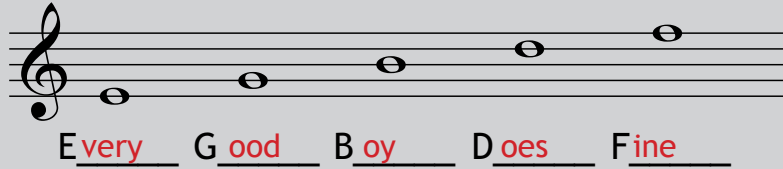
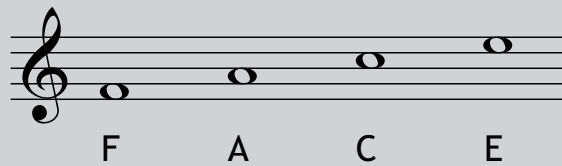


Notes in the Treble Clef

You can use a rhyme to remember notes on the lines:



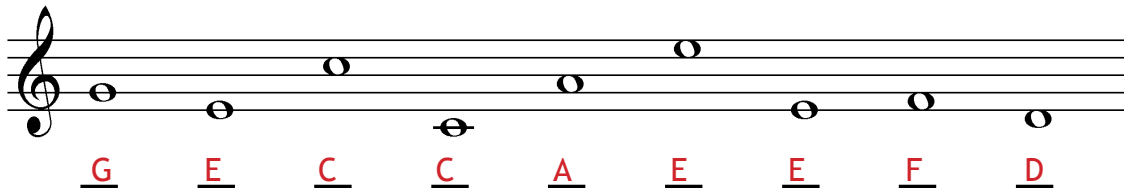
And remember a word for the space notes:



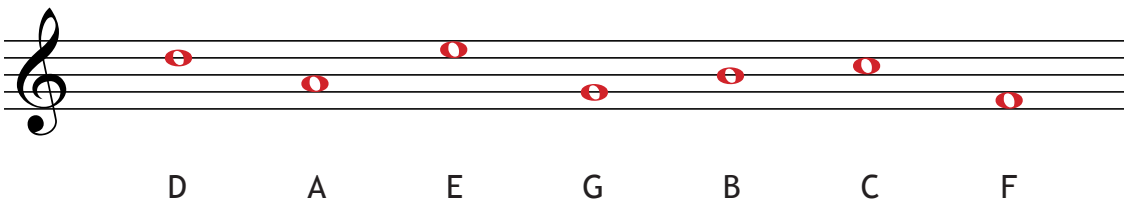
Alternatively, you can simply count up from a note that you know:



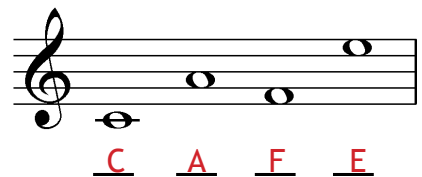
Name these notes:



Draw these notes:



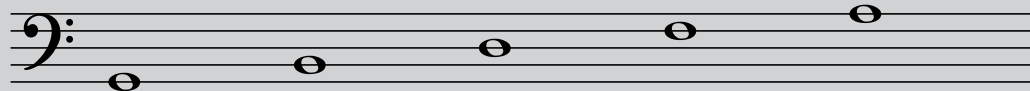
Decode the following "music words":



Notes in the Bass Clef

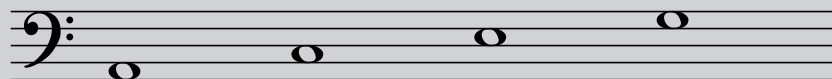
If you wish you can make up rhymes to remember the names of the bass clef notes:

on the lines:



Good Boys Do Fine Always

in the spaces:



All Cows Eat Grass

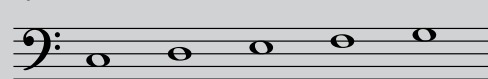
Or simply count in steps from a note that you know:

Down from middle C:



C B A G F

Up from low C:



C D E F G

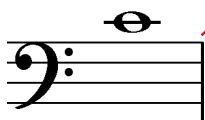
Match each note to its name:



A



C



B

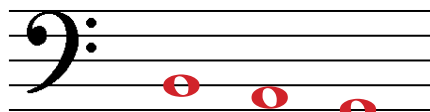


G

Write the following notes:

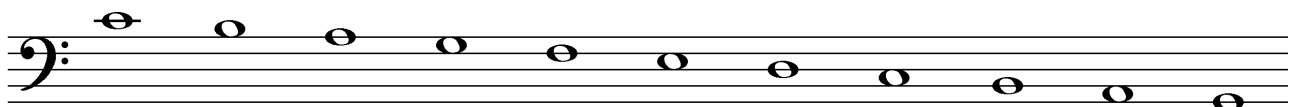


C A B



B A G

Continue the pattern to name the rest of the bass clef notes:

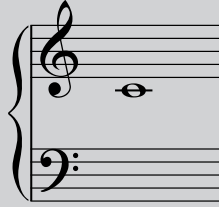


C B A G F E D C B A G

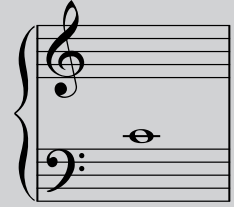
Notes on the Grand Staff

The **Grand Staff** is used by piano and other keyboard instruments that require two hands. The two staves are joined by a **brace** on the left hand side. Generally the right hand plays the upper staff and the left hand plays the lower.

Middle C can be written in either the treble:

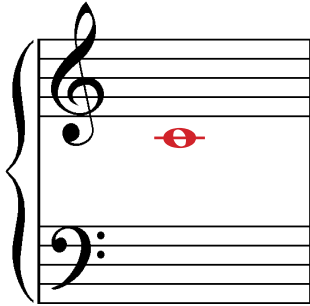


or the bass staff:

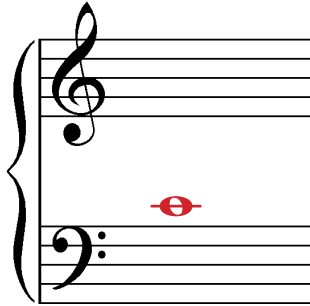


but it is the *same note* in either case

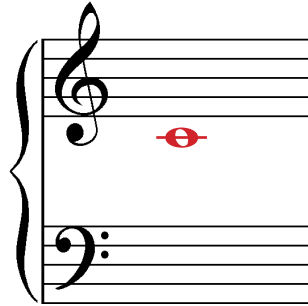
Draw middle C for the treble staff:



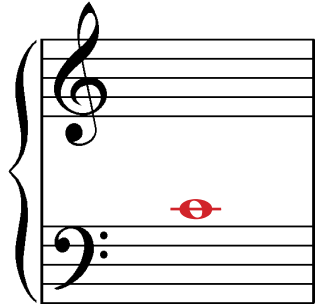
Draw middle C for the bass staff:



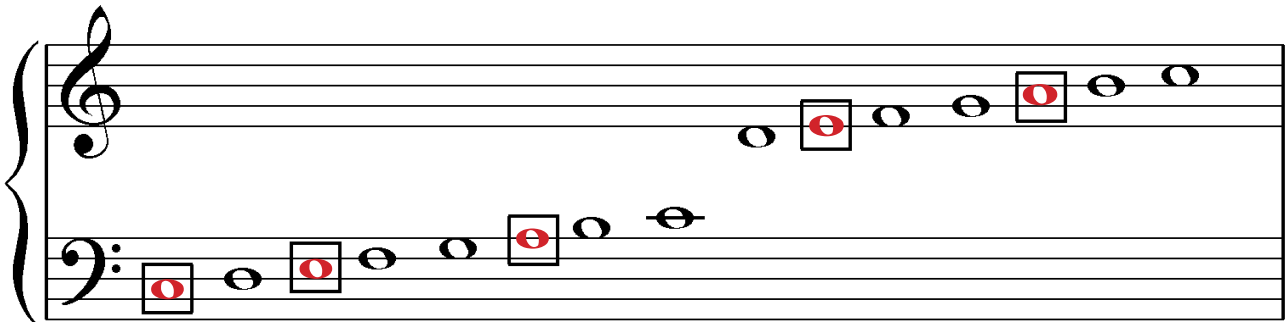
Draw middle C for the right hand to play:



Draw middle C for the left hand to play:



Fill in the gaps and name all these notes:

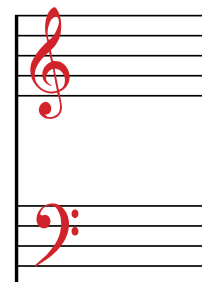
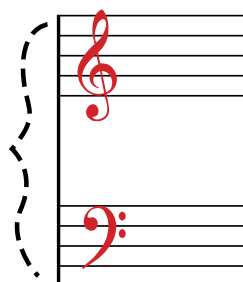
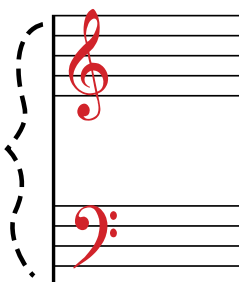


C D E F G A B C D E F G A B C

What is the symbol to the left hand side of the two staves called?

A Brace

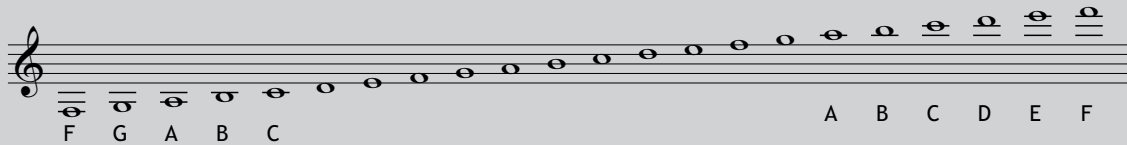
Trace and draw the braces on the side, then add clefs to these grand staves:



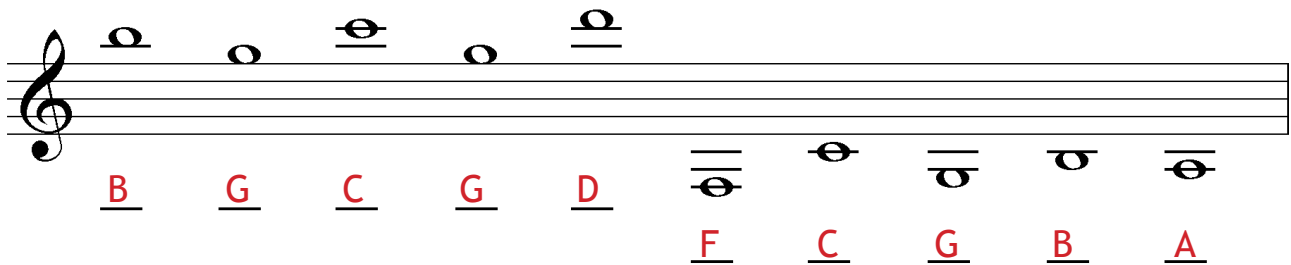
Leger lines

Leger lines (can be spelled as ledger lines) are used when notes are written higher or lower than the staff.

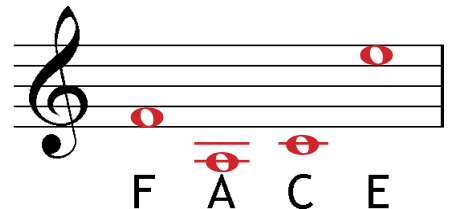
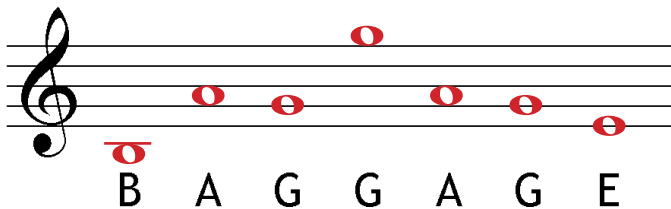
Leger lines in the treble clef



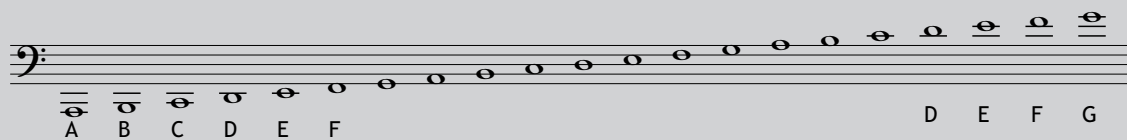
Name these notes:



Write these music words, using at least one leger line note:



Leger lines in the bass clef



Name these notes:

