

# The Treble Clef

The treble clef began as a stylised letter “g”, and it is used to show where G is on the staff.

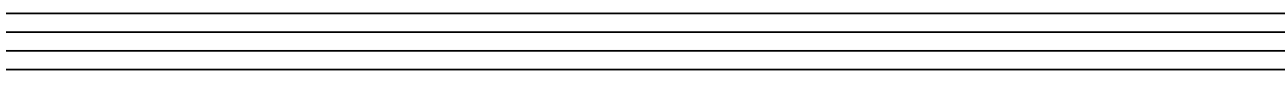
To draw it start on the second line of the staff (the G line)  
And continue like this:



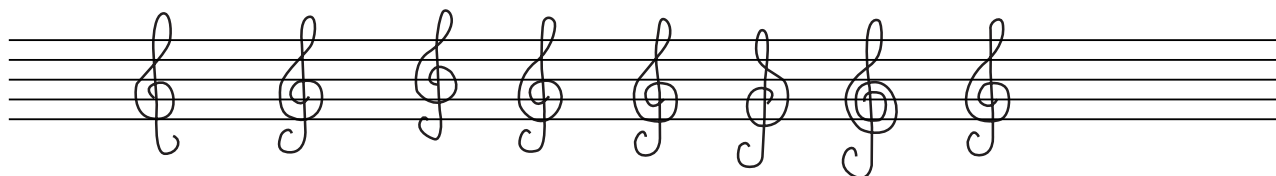
Trace the treble clefs onto the staff:



Draw 10 treble clefs on the staff below:



Circle the correctly written treble clefs:



The treble clef is also known as the \_\_\_ clef.

Why do you think it has this name?

---

---

Place a treble clef before the music notes  
in the correct place:

