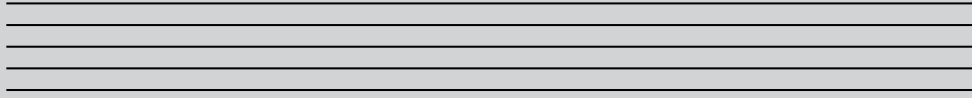


The Staff

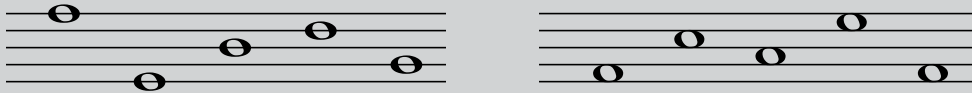
Music is placed on five lines, called the *staff*



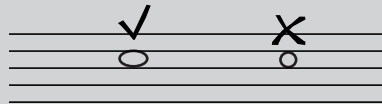
The *staff* can also be called the *stave*

Draw five lines to make a staff neatly with a ruler:

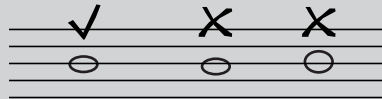
Music notes are placed either on the lines, or in the spaces:



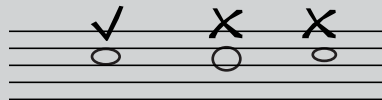
Music notes are not circular, they are shaped like ovals on their sides



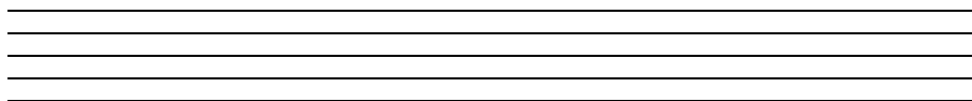
When drawing notes on a line, their centre goes right through the middle of the line, and no more than half the way through the space above and below.



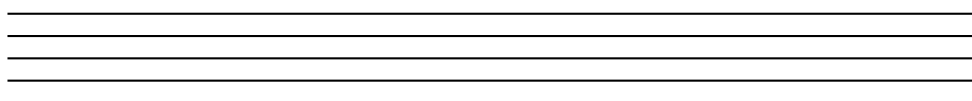
Space notes need to touch the lines above and below, but not go over them



Draw music notes on the lines on this staff:



Draw music notes in the spaces on this staff:



Complete this sentence:

The _____ which can be called a _____ has _____ lines and _____ spaces.