

Time Signatures

A *time signature* appears at the start of a piece of music.

4
4

The top number tells us how many beats are in a measure

The bottom number tells us what kind of note the beat is
4=Quarter Notes, 2=Half Notes, 8=Eighth Notes

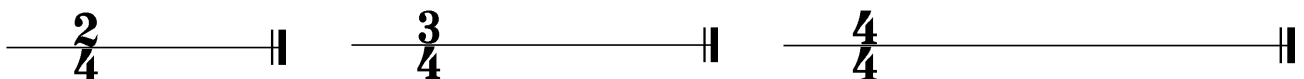
Therefore $\frac{4}{4}$ means that there are 4 **Quarter Note** beats in a measure.

$\frac{4}{4}$ can also be called *common time* and written as **C**

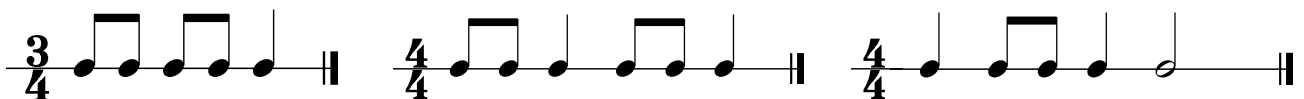
$\frac{3}{4}$ means that there are ___ beats in a measure.

$\frac{2}{4}$ means that there are ___ beats in a measure.

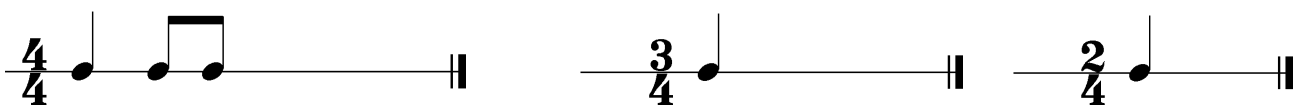
Fill each of these measures with Quarter Notes:



Circle the incorrect measure below:



Draw one appropriate note (either a quarter note, half note or whole note) to complete each one of these measures:



Add barlines to complete each of these rhythms:

