

Time Signatures

A *time signature* appears at the start of a piece of music.

4
4

The top number tells us how many beats are in a bar

The bottom number tells us what kind of note the beat is
4=Crotchets, 2=Minims, 8=Quavers

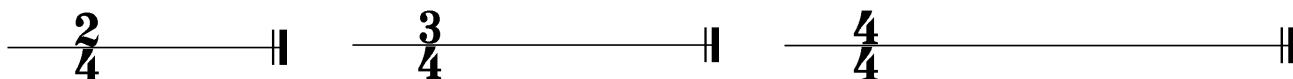
Therefore $\frac{4}{4}$ means that there are 4 **Crotchet** beats in a bar.

$\frac{4}{4}$ can also be called *common time* and written as **C**

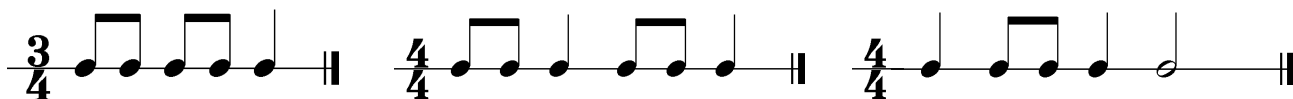
$\frac{3}{4}$ means that there are ___ beats in a bar.

$\frac{2}{4}$ means that there are ___ beats in a bar.

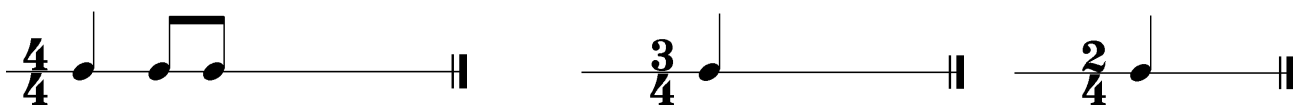
Fill each of these bars with Crotchets:



Circle the incorrect bar below:



Draw one appropriate note (either a crotchet, minim or semibreve) to complete each one of these bars:



Add barlines to complete each of these rhythms:

