
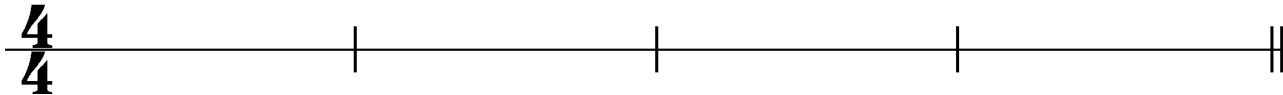
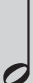


# Whole Notes, Half Notes and Quarter Notes

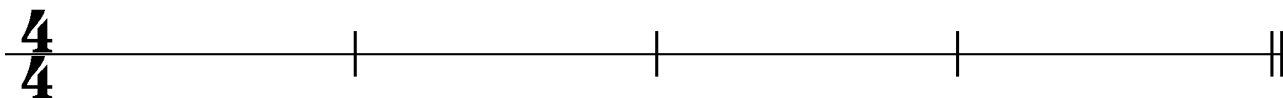
 The whole note has four counts in commonly used time signatures


Draw a whole note in each measure below:



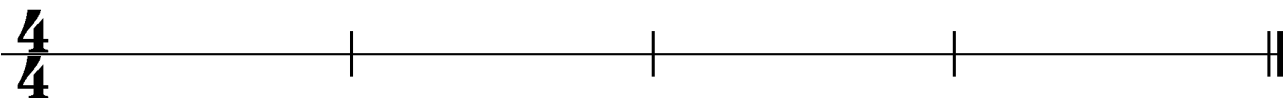
 The Half Note has two counts in commonly used time signatures

Draw two Half Notes in each measure below:

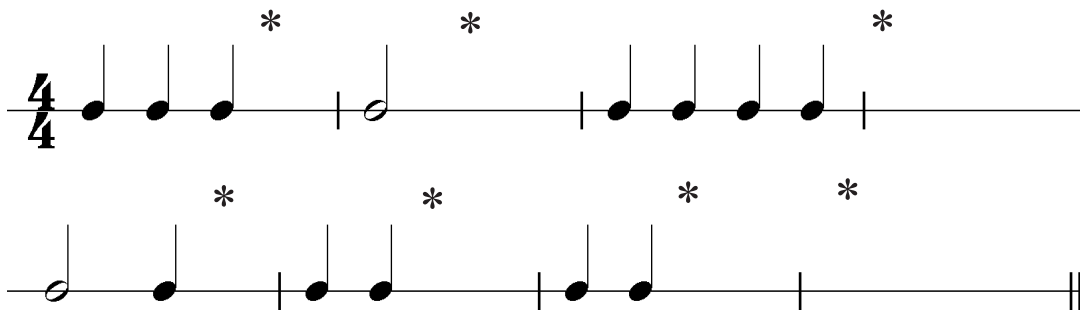


 The Quarter Note has one count in commonly used time signatures

Fill each measure below with four quarter notes:



Under each \* complete each of these rhythms with either a quarter note, a half note or a whole note:



Complete the "beat tree":

