

Compound Time

In Compound Time the beat is subdivided into groups of three rather than two.

Simple Time:



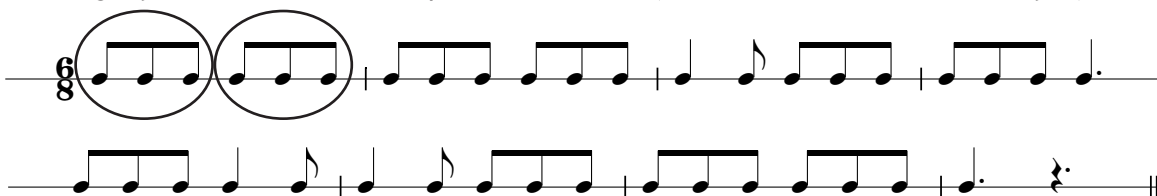
Compound Time:



The primary beat in a compound time signature is a **dotted note**.

Compound time signatures include: 6 9 12
 8 8 8

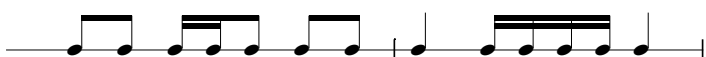
In the following rhythm circle the dotted quarter note beats (the first bar has been done for you):



Identify the following rhythms as simple or compound. (Look at whether the groups are in twos or threes):







Complete this table by drawing either a quarter note or dotted quarter note equal in value to each of these note groups, then write "simple" or "compound" to describe the time signature that they belong in. (The first row has been done for you.)

		simple