

Working Out the Key

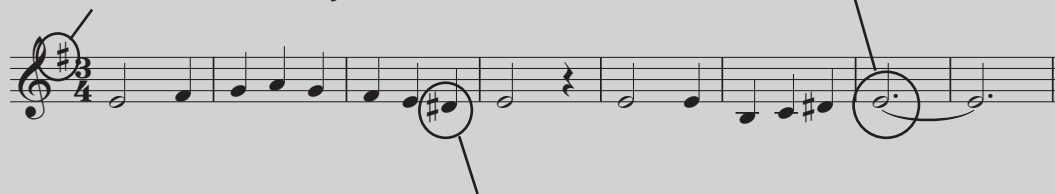
To work out the key of a piece of music:

- 1) Look at the key signature.
- 2) Look at the last note - often (but not always) this will be the **tonic note**.
- 3) Look for the raised seventh of the harmonic minor scale.

For example:

1) This piece has a key signature of one sharp, therefore it is either G major or E minor.

2) The final note is E, so that makes it seem likely that it is E minor.



3 - The presence of a D sharp (which is the raised seventh of E minor) confirms that this piece is in E minor.

Work out the key of the following classical themes:

Largo



key: _____

Moderato



key: _____

Allegro



key: _____

Moderato



key: _____

Allegro



key: _____

Sample Worksheet from "Printable Music Theory Books" from the Fun Music Company
Download a free printable and watermark free version