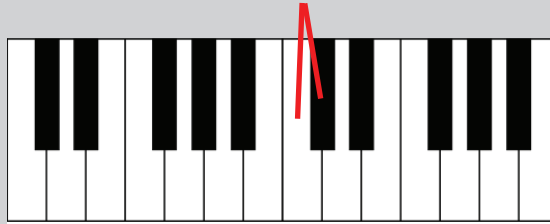
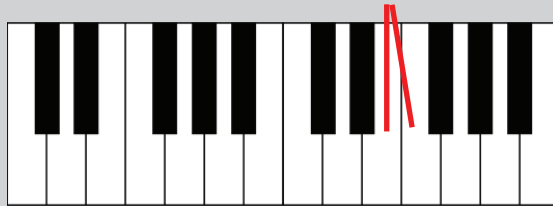


# Semitones

On a piano keyboard, a semitone is the *smallest distance possible* between two neighbouring notes for example, C to C sharp is a semitone



and E to F is a semitone, because it has no black note between



Semitones are sometimes called *half steps*

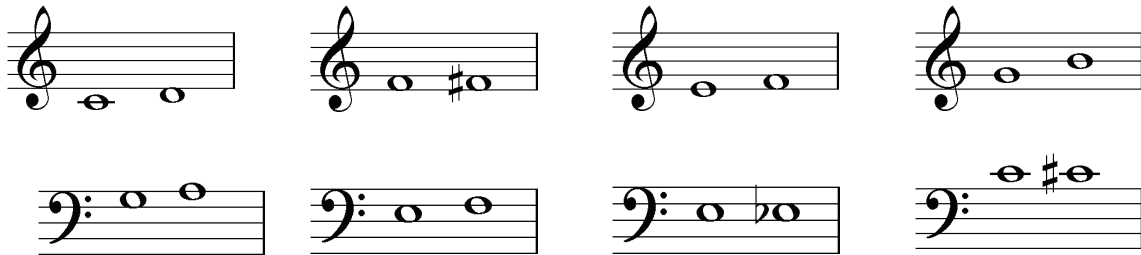
What note is a semitone higher than G? \_\_\_\_\_

What note is a semitone lower than E? \_\_\_\_\_

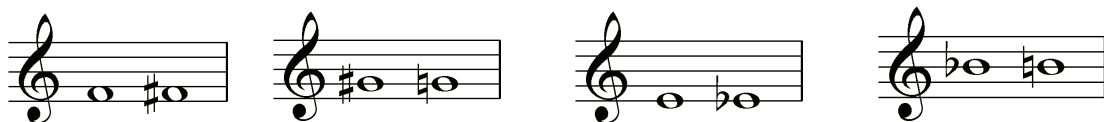
What note is a semitone higher than B? \_\_\_\_\_

What note is a semitone lower than F? \_\_\_\_\_

Circle the semitones:



Circle the higher note in each of these examples:



Circle the semitones in this melody:

for example:

