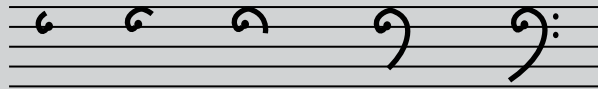


The Bass Clef

The bass clef is also called the “F clef” because it defines where F is on the staff.

To draw it, start with a dot on the F line, curve up and touch the top line, then curve downward, finishing on or just under the fourth line.

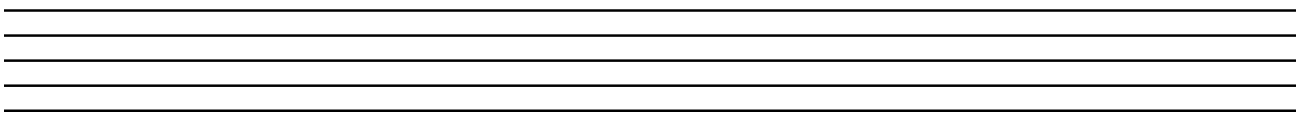
The dots must go on each side of the F line, in the top two spaces of the staff.



Trace the bass clefs:



Draw enough bass clefs to fill this line neatly:

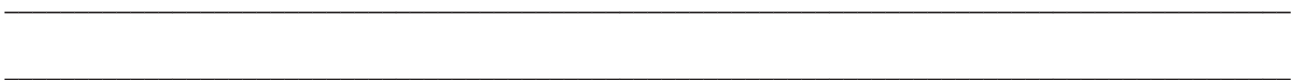


Circle the three correct bass clefs:



The bass clef is also known as the ____ clef.

Why?



Place a bass clef before these music notes in the correct place:

