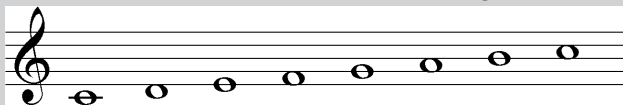


# What is a Scale?

A *scale* is a pattern of notes that ascends or descends step by step to the same note an octave higher.



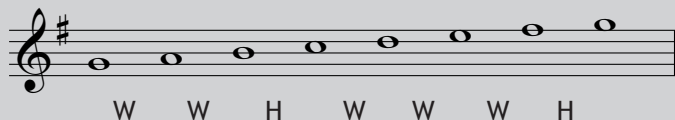
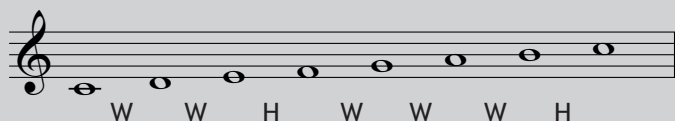
Each type of scale (major, minor, etc.) has a pattern of whole steps and half steps which is always the same.

## The Major Scale

The *major scale* has a pattern of whole steps and half steps like this:

whole step - whole step - half step - whole step - whole step - whole step - half step  
(W-W-H-W-W-W-H)

This pattern is the same, no matter what note the scale starts and ends on.



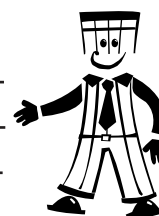
Another way to remember it is that the half steps come between the **3rd & 4th** and **7th & 8th** degrees of the scale.

Write out the pattern of whole steps and half steps in the major scale three times:

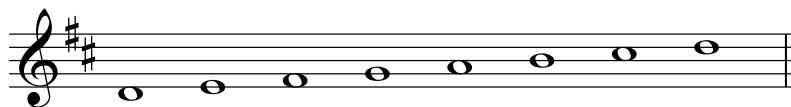
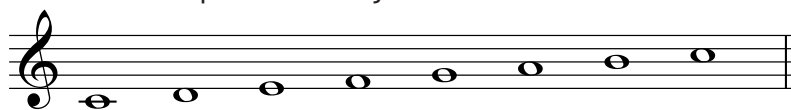
---

---

---



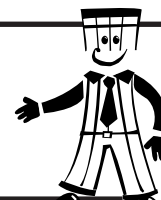
Mark the half steps in these major scales with slurs:



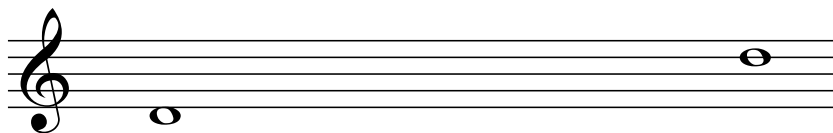
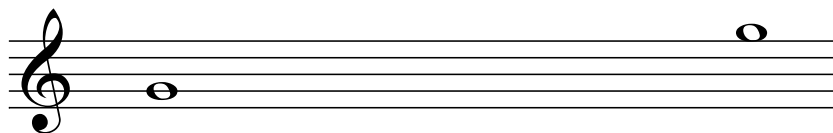
### Interesting Trivia

It is impossible to have a mix of sharps and flats in a major scale. If a scale has both sharps and flats occurring in it, then its not a major scale.

# Writing Major Scales



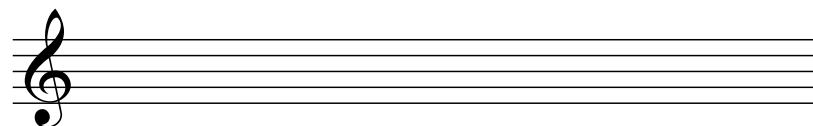
Draw notes between the given notes to make major scales:



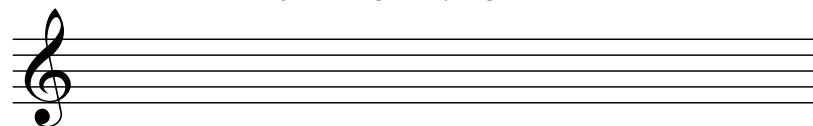
In a major scale the half steps come between the

\_\_\_ and \_\_\_ and, \_\_\_ and \_\_\_ degrees.

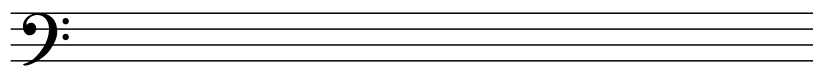
Write the scale of C Major, one octave ascending in whole notes:



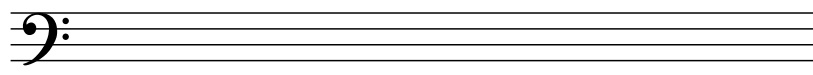
Write the scale of G Major using a key signature, one octave ascending in half notes:



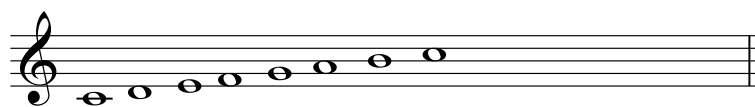
Write the scale of F Major using a key signature, one octave ascending in quarter notes:



Write the scale of G Major using an accidental instead of a key signature, one octave ascending in whole notes:



Describe what is wrong with the way each of these scales is written:



\_\_\_\_\_



\_\_\_\_\_



\_\_\_\_\_

## Tips and Tricks

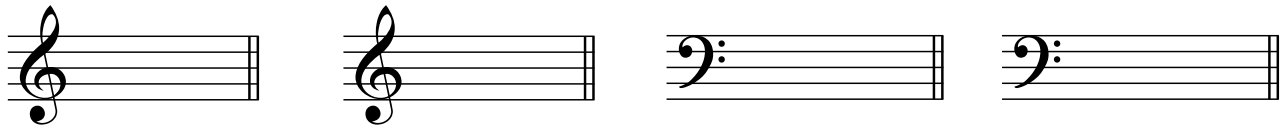
1 - Always space the notes evenly over the entire bar that is given.

2 - Read the question carefully, and make sure that you have answered everything and followed the directions.

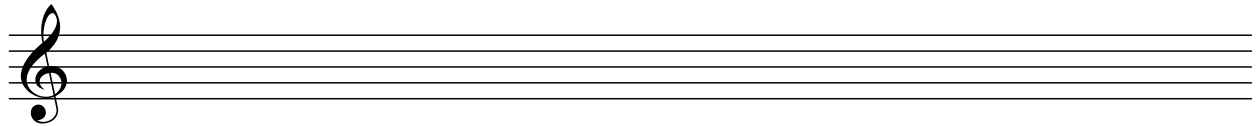
3 - Write very neatly!

# The Key of D Major

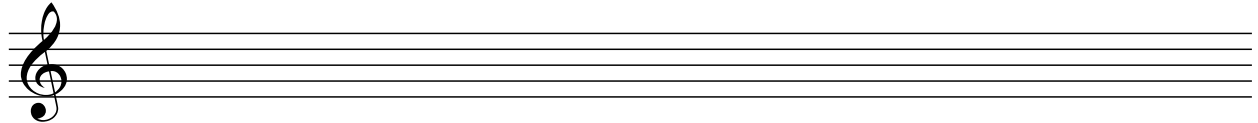
Write the key signature of D major in the treble and bass clefs:



Write the scale of D major using a key signature, then mark the half steps with slurs:



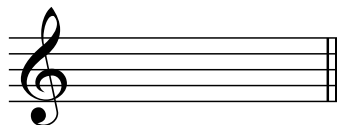
Write the scale of D major using accidentals instead of a key signature, then mark the half steps with slurs:



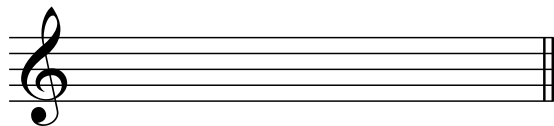
True or false: this excerpt of music is in D major. \_\_\_\_\_



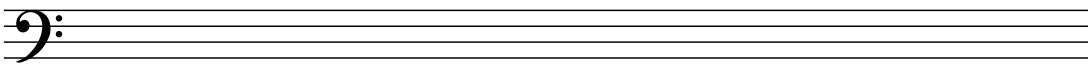
Write the key signature and tonic triad\* of D major:



Write the one octave arpeggio\* of D major:



Write the scale of D major on the bass staff, one octave ascending using whole notes. Finish with a double bar line and mark the half steps with slurs:



\* Refer to glossary for more information