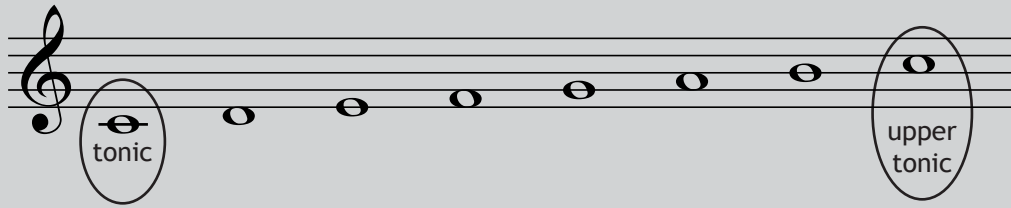
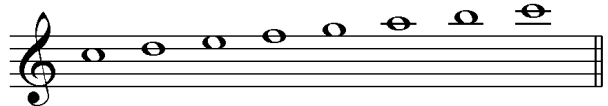


The Tonic Note

The first note (and last note) of a scale is called the *tonic*.



Circle the tonic notes in these scales:

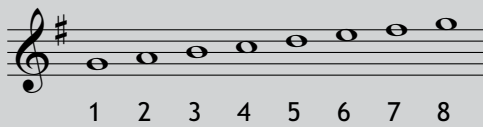


Circle the tonic notes in this melody:



Scale Degree Numbers

A scale can be numbered from 1-8 from the lowest to the highest note



Using this as a reference, you can add scale degree numbers under a melody like this:



Add the scale degree numbers under these melodies:

