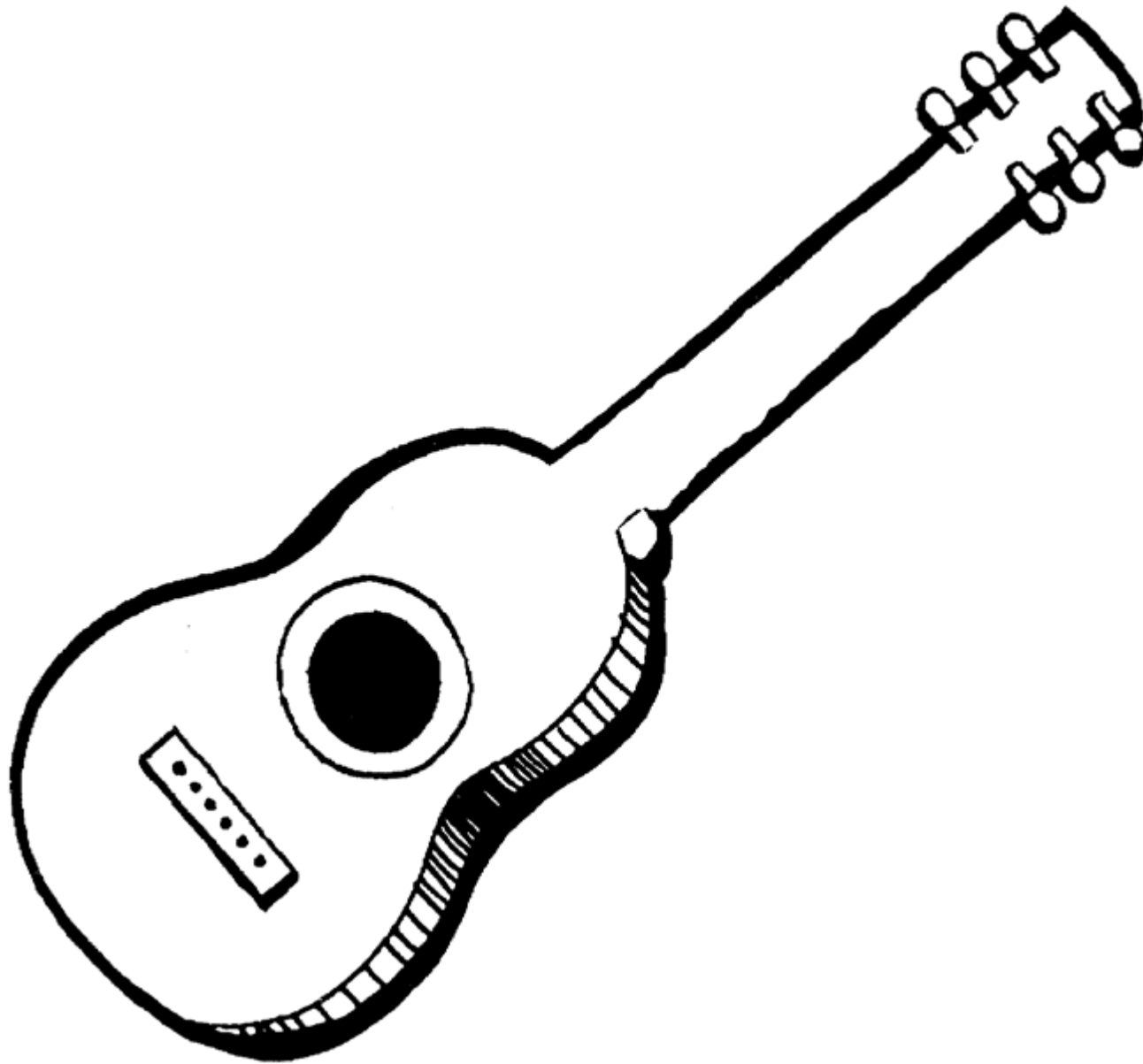


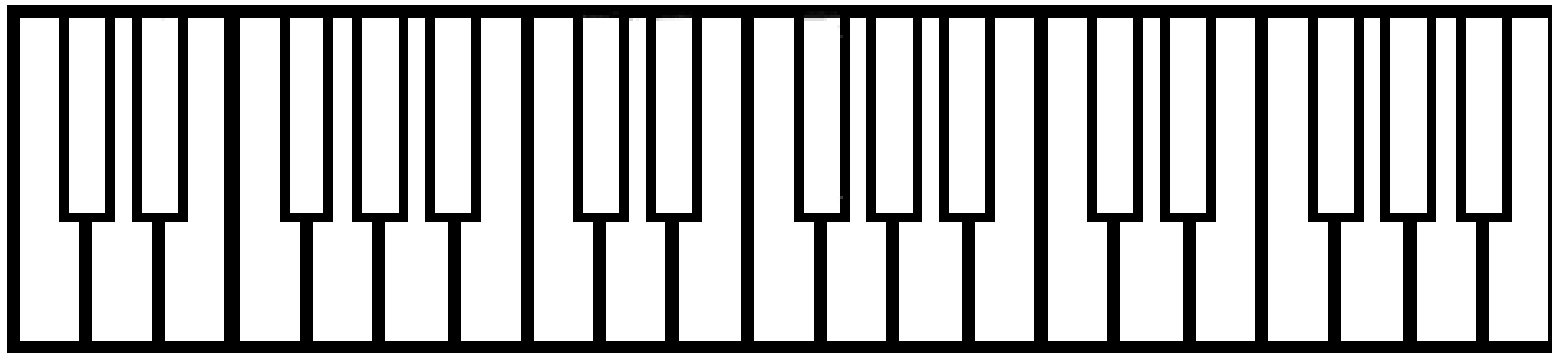
**Draw and Colour what Music means to you**

MUSIC

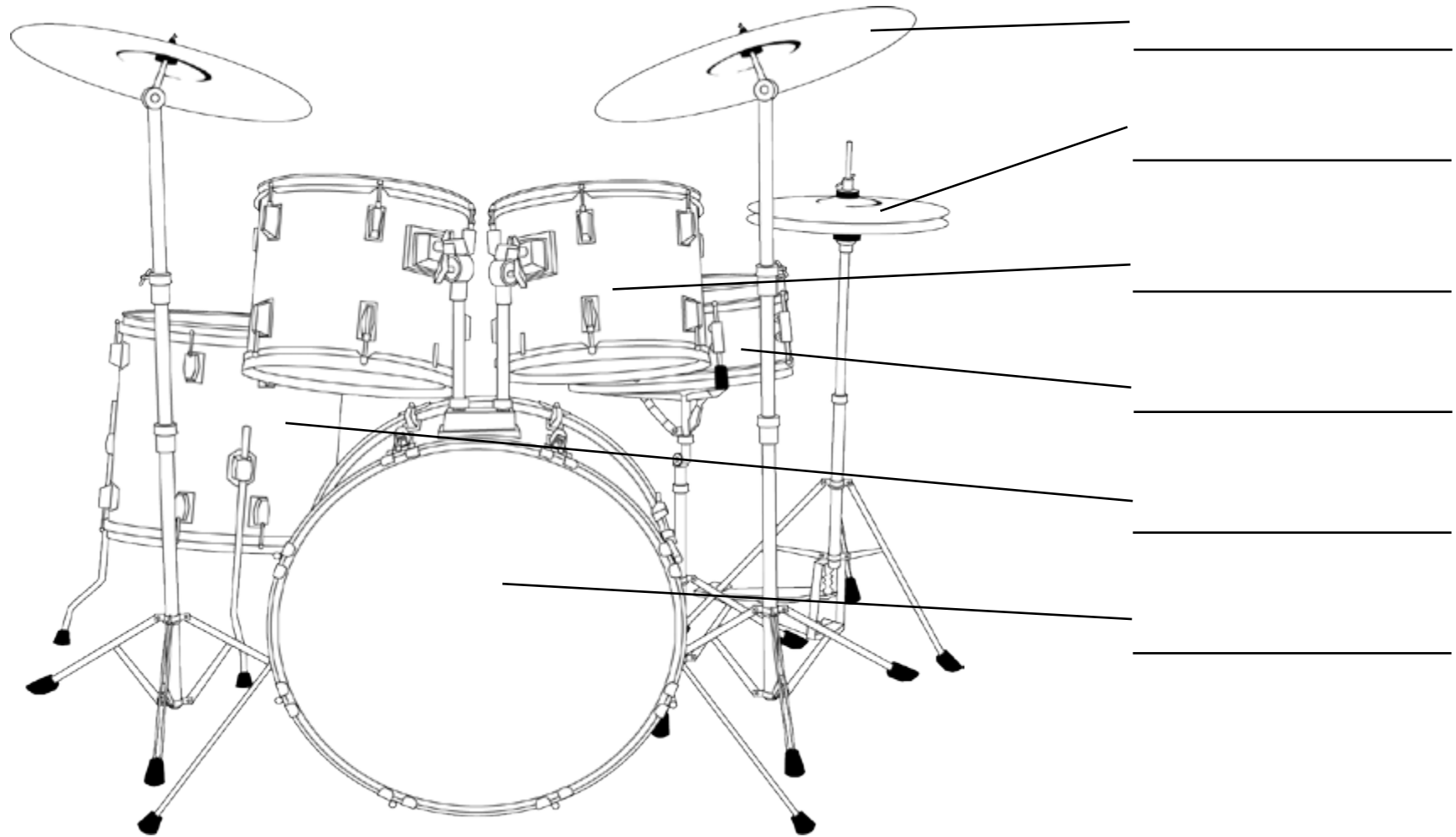
# Draw The Missing Strings of the Guitar



# Colour in the Black Keys of the Piano Keyboard



# Name the Parts of the Drum Kit



# Draw a line from each instrument to its family name

Strings

Woodwind

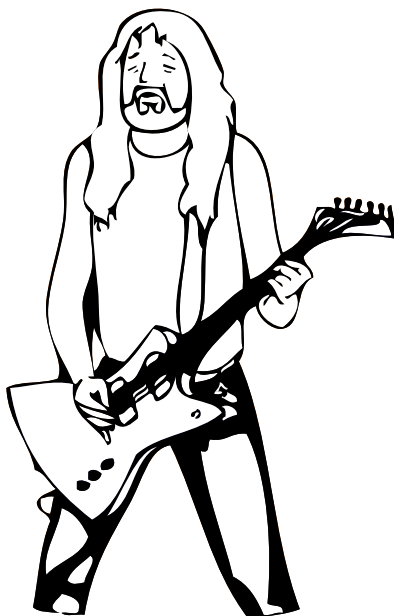
Percussion

Brass



Draw a line connecting each musician with their role in the Rock Band

Plays the  
Chords



Keeps the  
Beat



Sings the  
Tune

Plays the  
low notes

# Label and Colour Instruments used in Jazz



\_\_\_\_\_



\_\_\_\_\_



\_\_\_\_\_



\_\_\_\_\_

## Find the Band Instrument Names

s a x o p h o n e b

n t r u m p e t b a

a i i t h i s r d s

r m r p t c p o h s

e p e m u c h m o d

d a a o b o e b f r

r n x c a l e o l u

u i n n h o r n u m

m c l a r i n e t r

u a e h u m e b e r

flute

clarinet

bass drum

saxophone

oboe

horn

trumpet

trombone

tuba

piccolo

snare drum

timpani



## Where do these instruments come from?



The *Djembe* is from A\_\_\_\_\_



The *Accordion* is from E\_\_\_\_\_

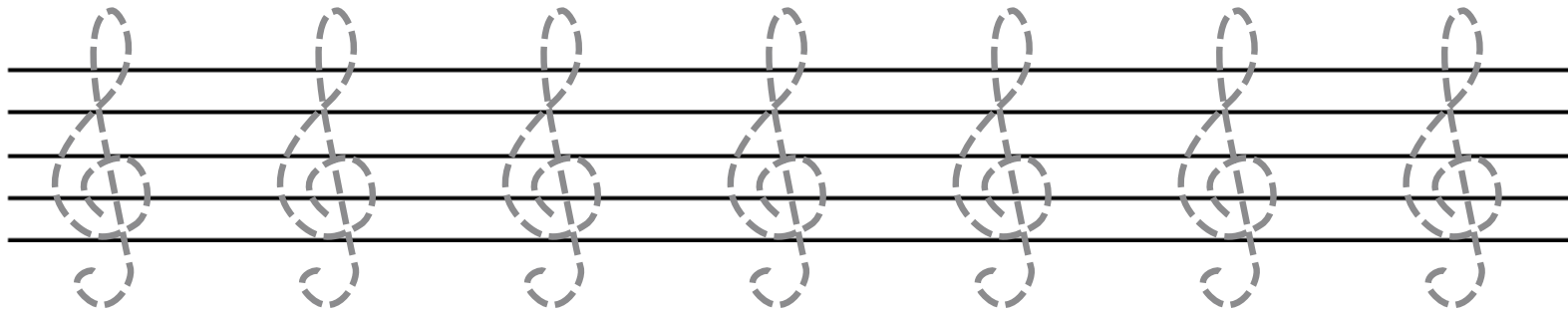


The *Sitar* is from I\_\_\_\_\_

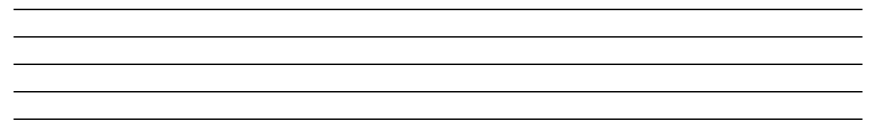
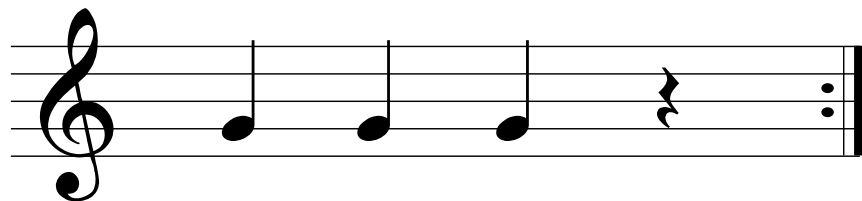


The *Conga Drums* are from S\_\_\_\_\_ A\_\_\_\_\_

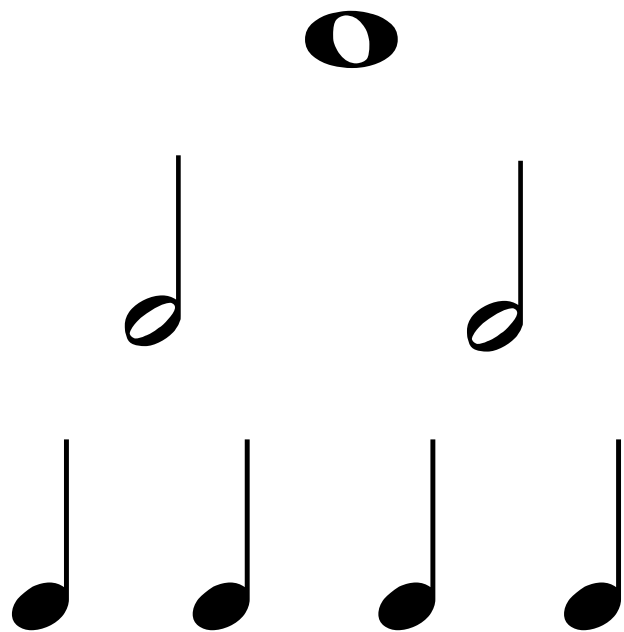
# Practice Tracing These Treble Clefs



**Copy**



Copy these notes



# Fast and Slow Objects

Draw a line from each picture to either “fast” or “slow”

**Fast**

**Slow**



# Loud and Soft

Draw a line between each picture and a symbol which represents it's sound



*p*

*f*

# My own composition