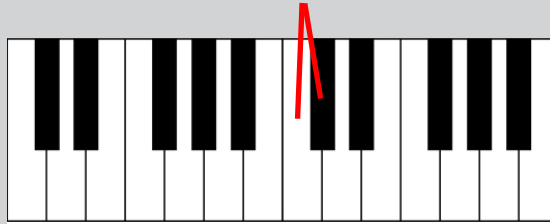
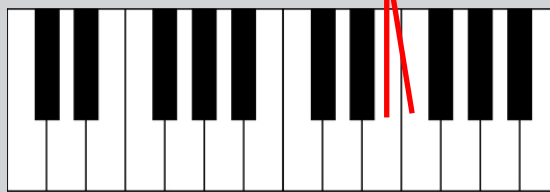


Half Steps

On a piano keyboard, a half step is the *smallest distance possible* between two neighbouring notes for example, C to C sharp is a half step



and E to F is a half step, because it has no black note between



Half steps are sometimes called *semitones*

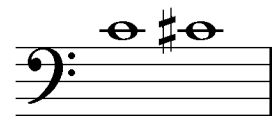
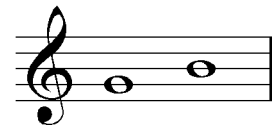
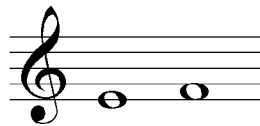
What note is a half step higher than G? _____

What note is a half step lower than E? _____

What note is a half step higher than B? _____

What note is a half step lower than F? _____

Circle the half steps:

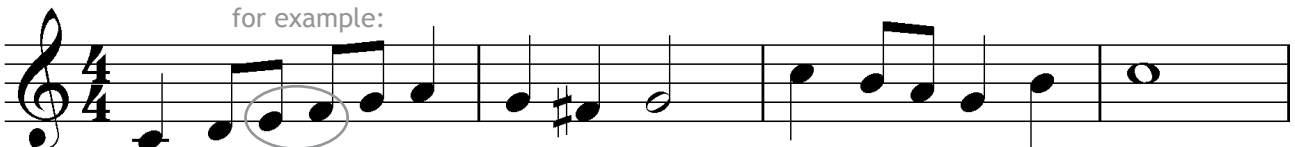


Circle the higher note in each of these examples:



Circle the half steps in this melody:

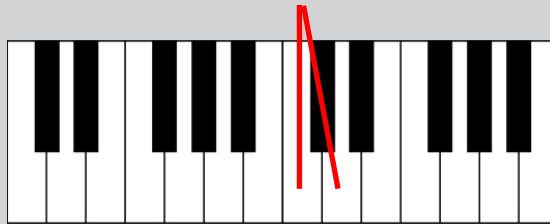
for example:



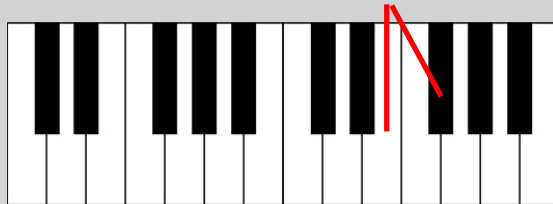
Whole Steps

A whole step is made up of two half steps, or stepping from one note to another with a note in between.

For example: C to D is a whole step

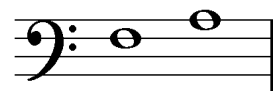
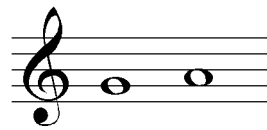
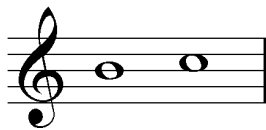
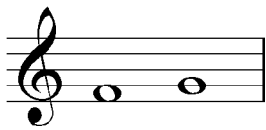


and E to F sharp is a whole step



Whole steps are sometimes called *tones*.

Circle the whole steps:



What note is a whole step higher than A? _____

What note is a whole step lower than E? _____

What note is a whole step higher than B? _____

What note is a whole step lower than G sharp? _____

Circle the whole steps in this melody:



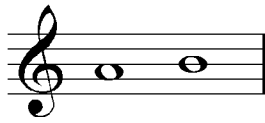
A whole step can be called a _____ .

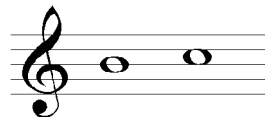
A half step can be called a _____ .

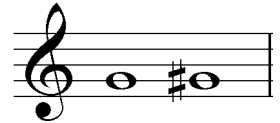
Whole Steps and Half Steps

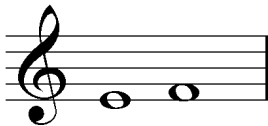
Name the following as whole steps or half steps:

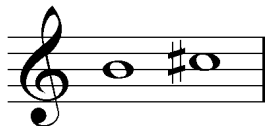


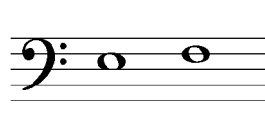


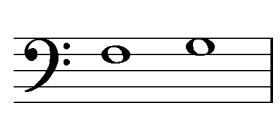












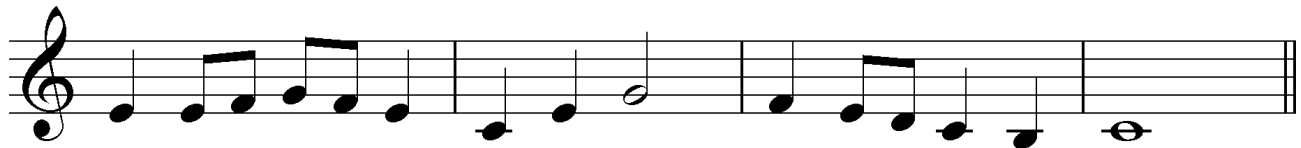
What note is a half step lower than C? _____

What note is a whole step higher than D? _____

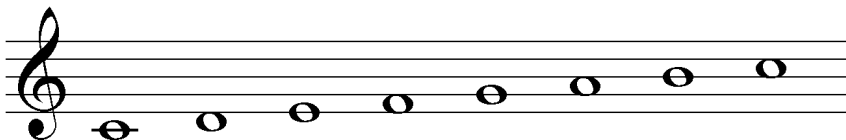
What note is a half step higher than E? _____

What note is a whole step lower than F? _____

Mark the whole steps in this melody with a rectangle and mark the half steps with a circle:
(the first measure has been done for you)



Mark the **half steps** in this scale:



Mark the **whole steps** in this scale:

