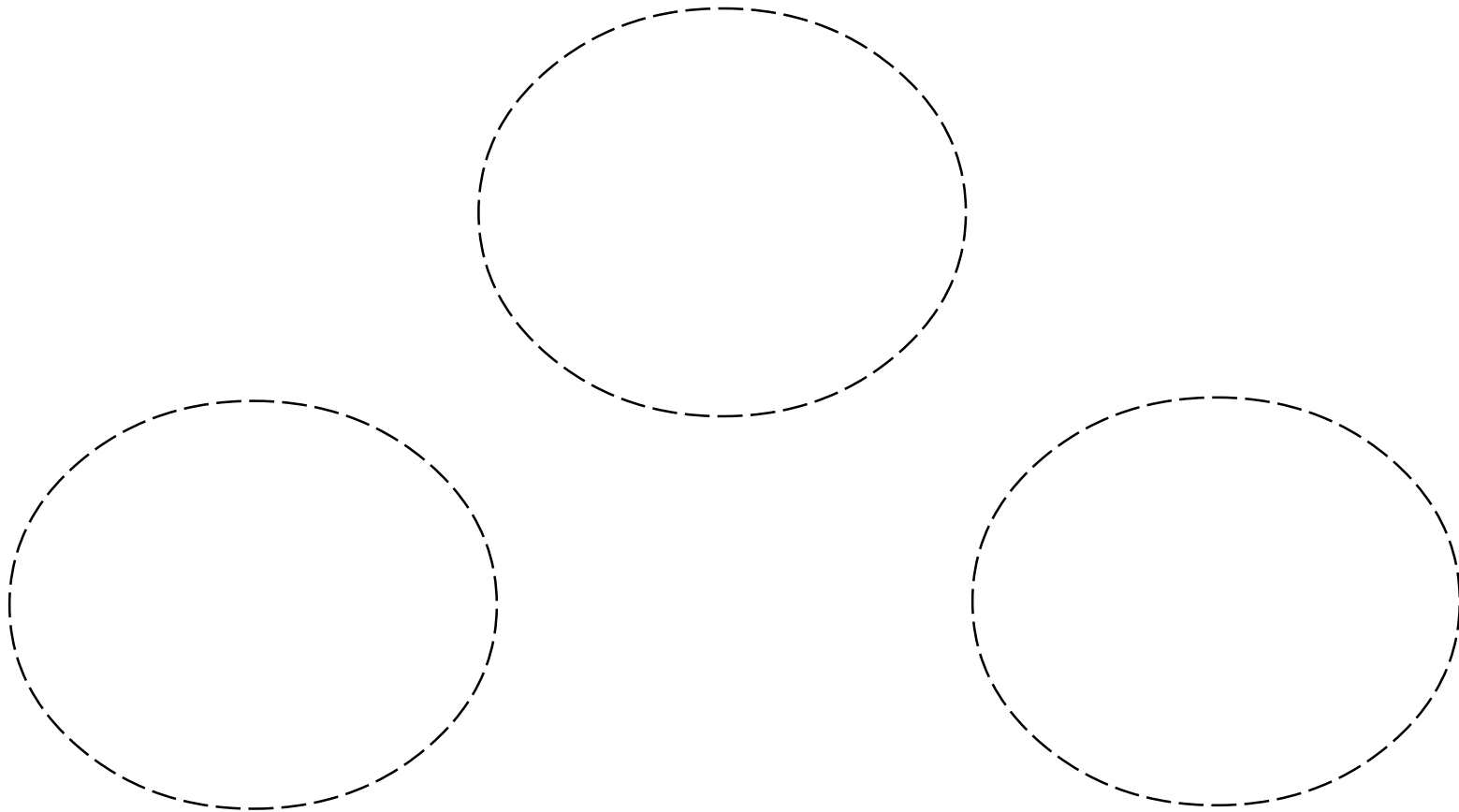
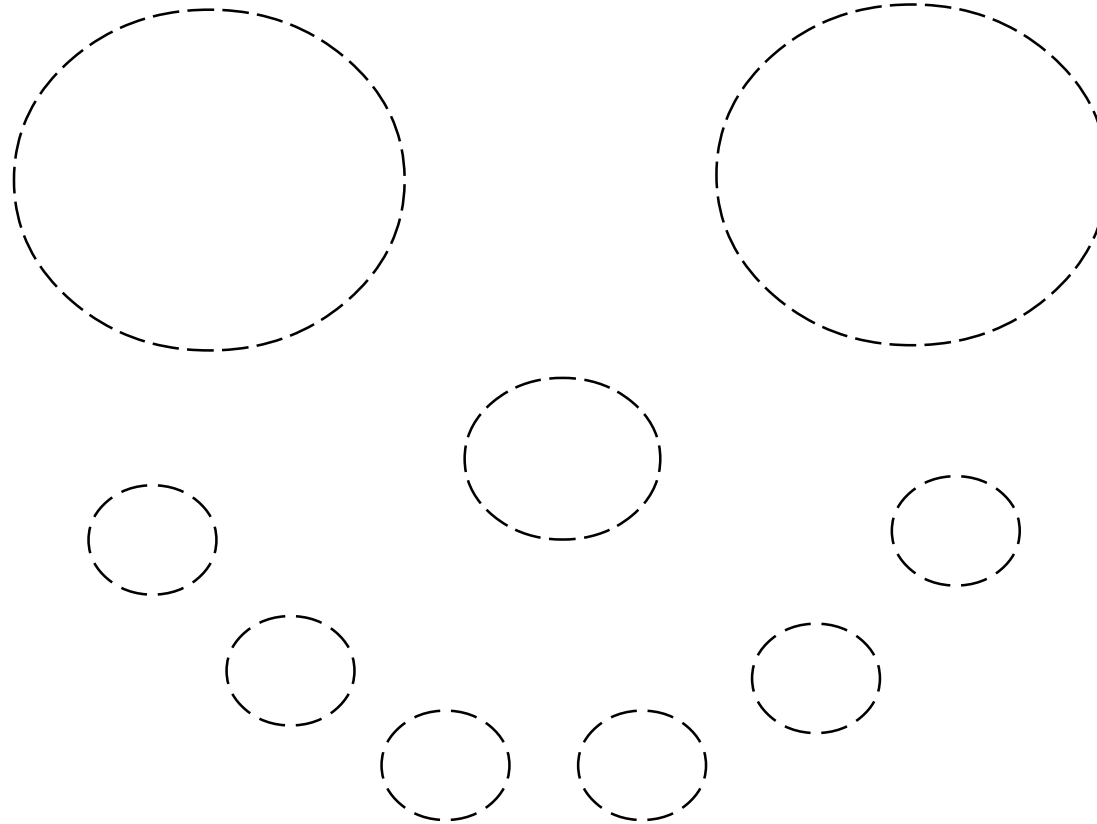




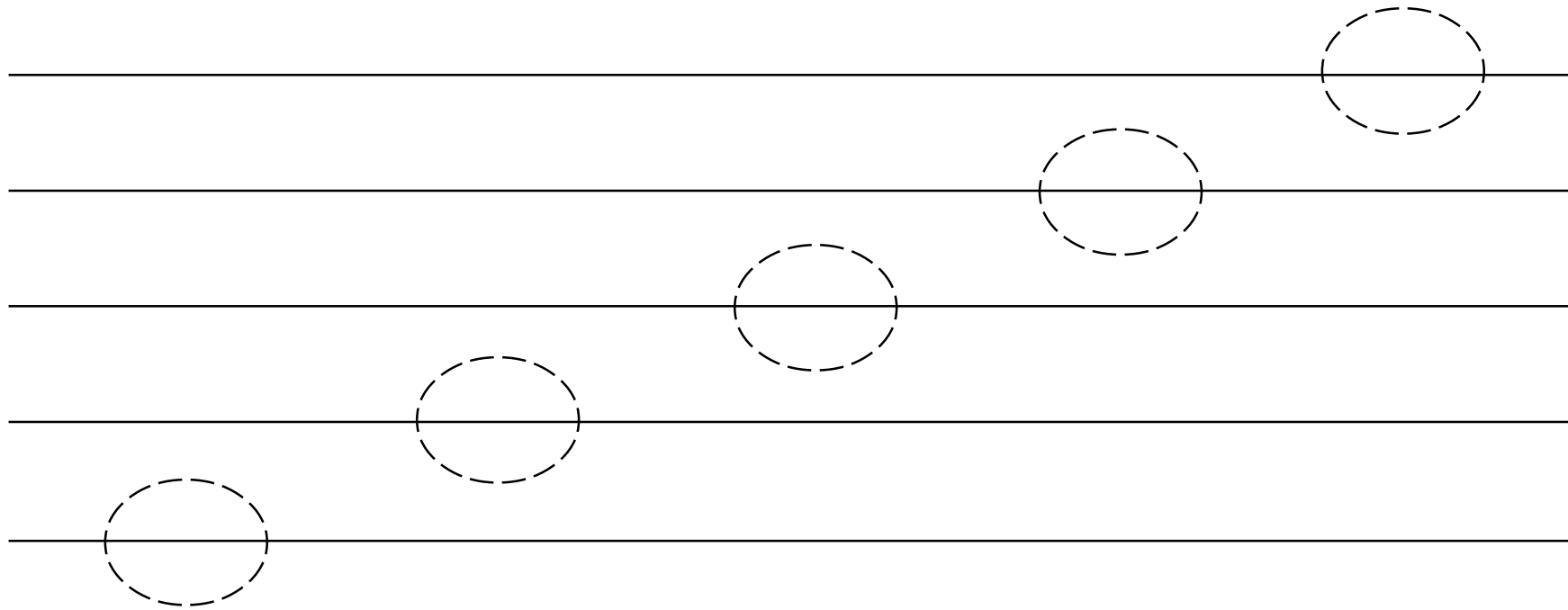
Circles



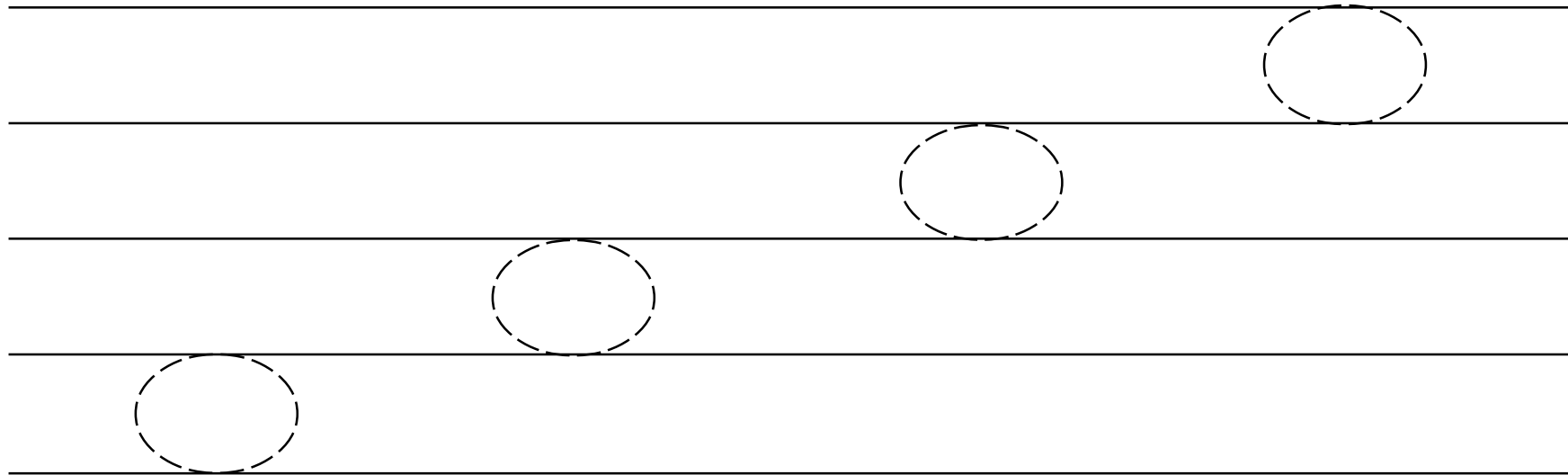
Circles



Notes On Lines

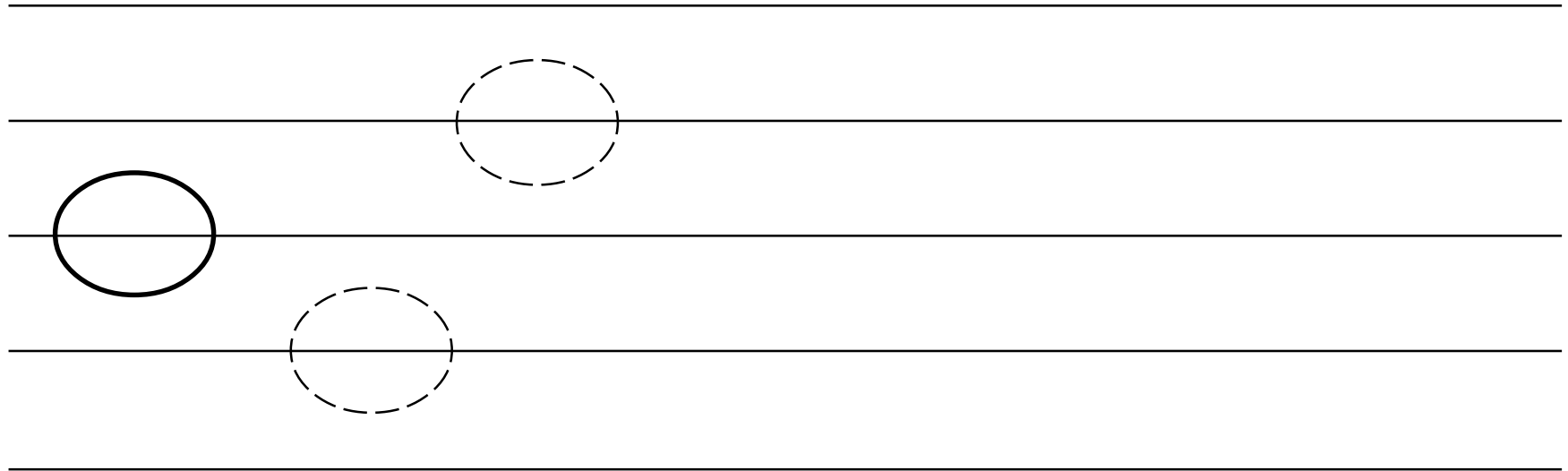


Notes in Spaces





Notes On Lines



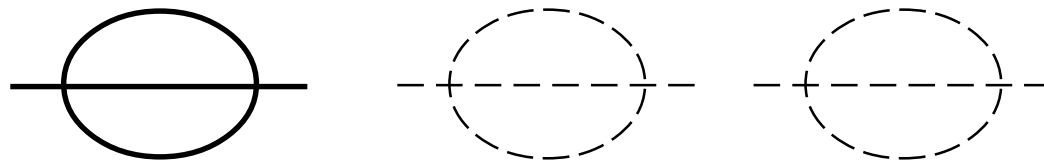
Notes in Spaces



A musical staff with five horizontal lines. The first space (between the first and second lines) contains a solid black circle. The second space (between the second and third lines) contains a dashed black circle. The third space (between the third and fourth lines) contains a dashed black circle. The fourth and fifth spaces are empty.

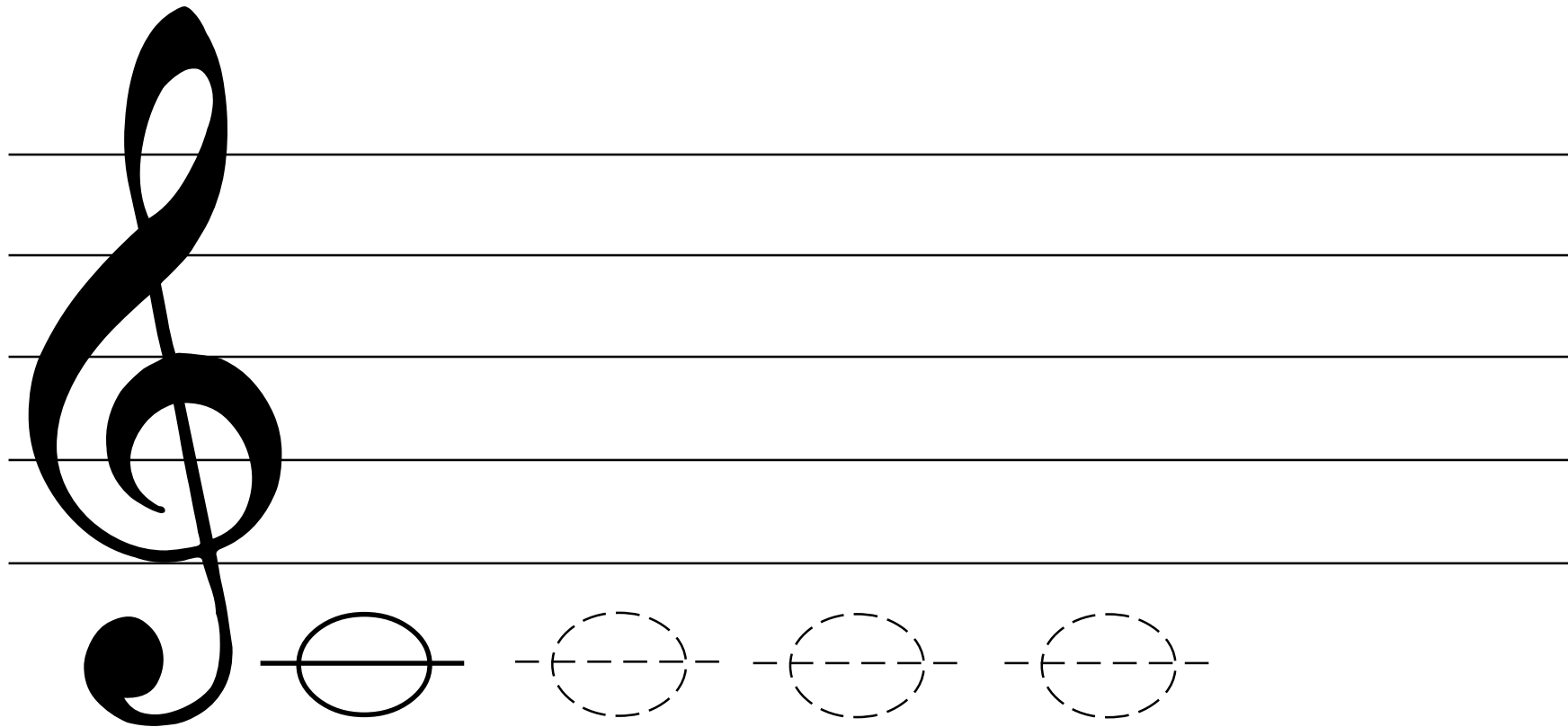
Note Drawing

Trace and Draw:

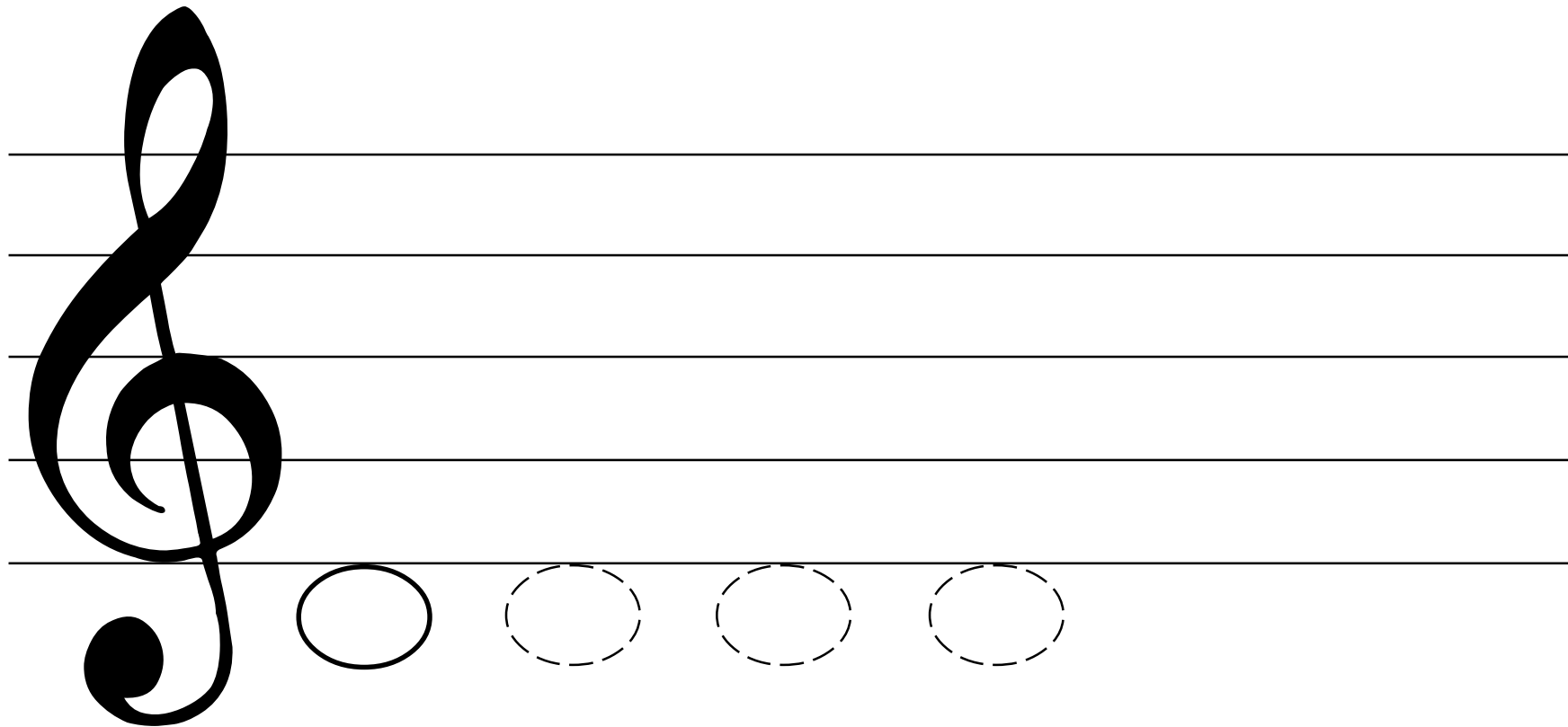


Note Drawing

Trace and Draw:

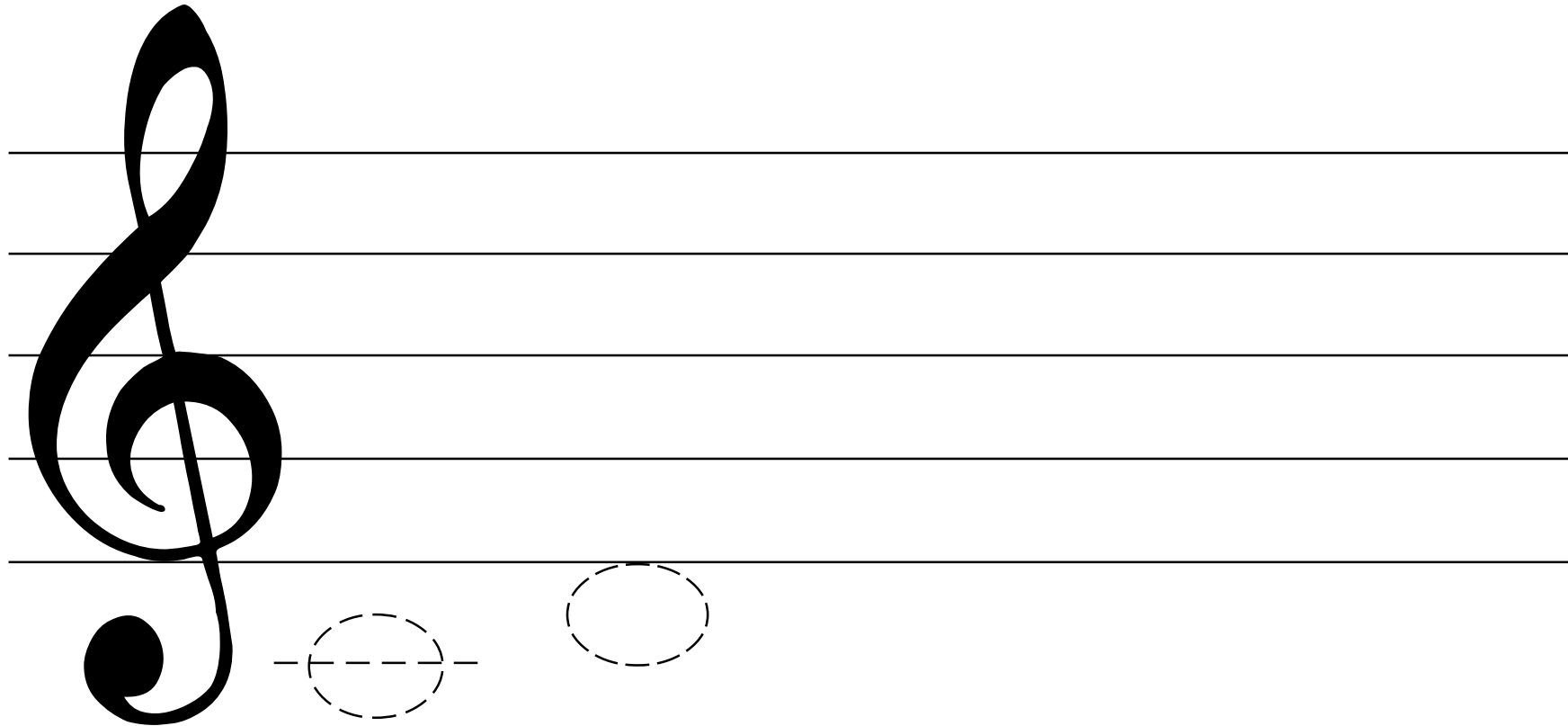


Note Drawing



Note Drawing

Trace and Draw:





Note Drawing

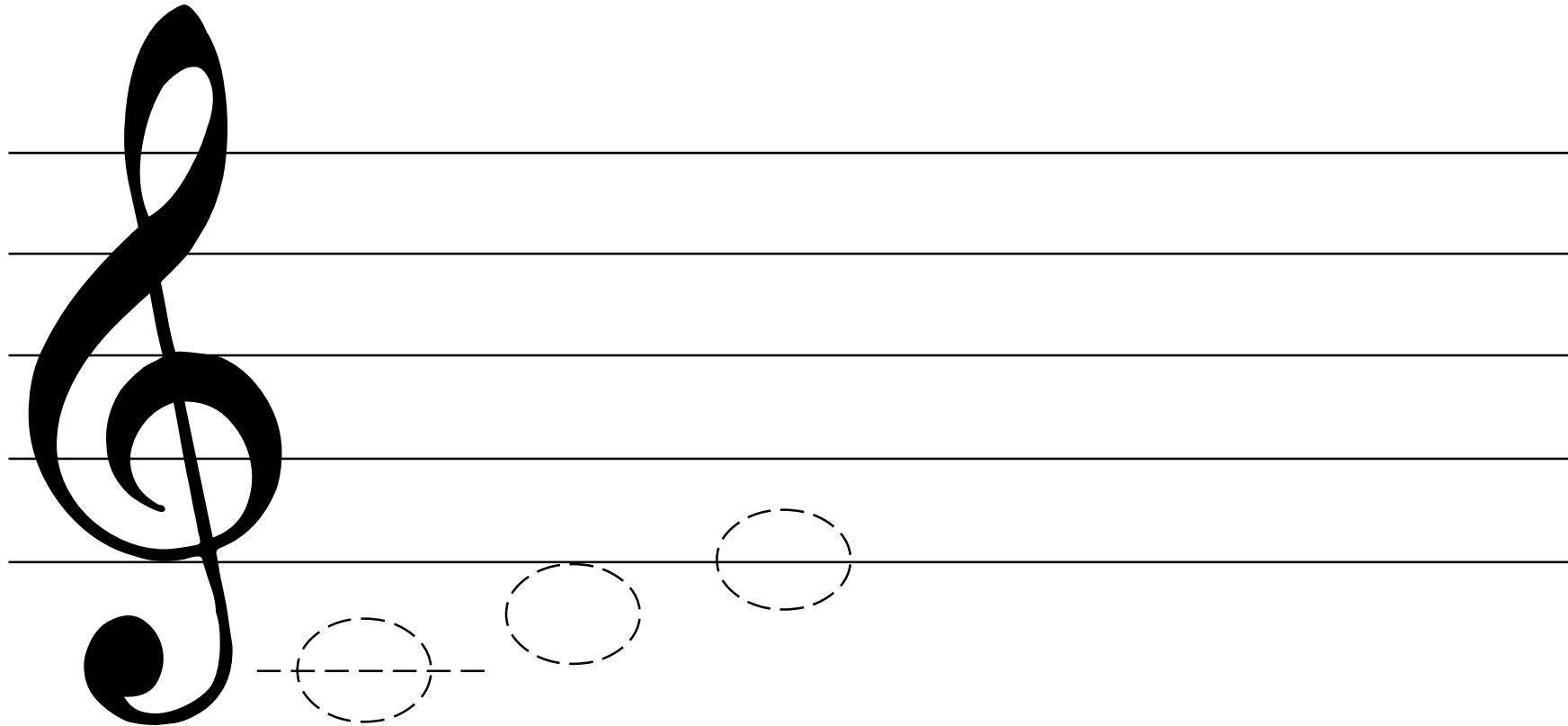
Trace and Draw:

A musical staff with five horizontal lines. On the left side, there is a large, solid black treble clef. To the right of the clef, there are four notes on the first line (the bottom line) of the staff. The first note is a solid black circle. The second, third, and fourth notes are dashed circles, intended for tracing. The notes are positioned on the first line of the staff.

Note Drawing

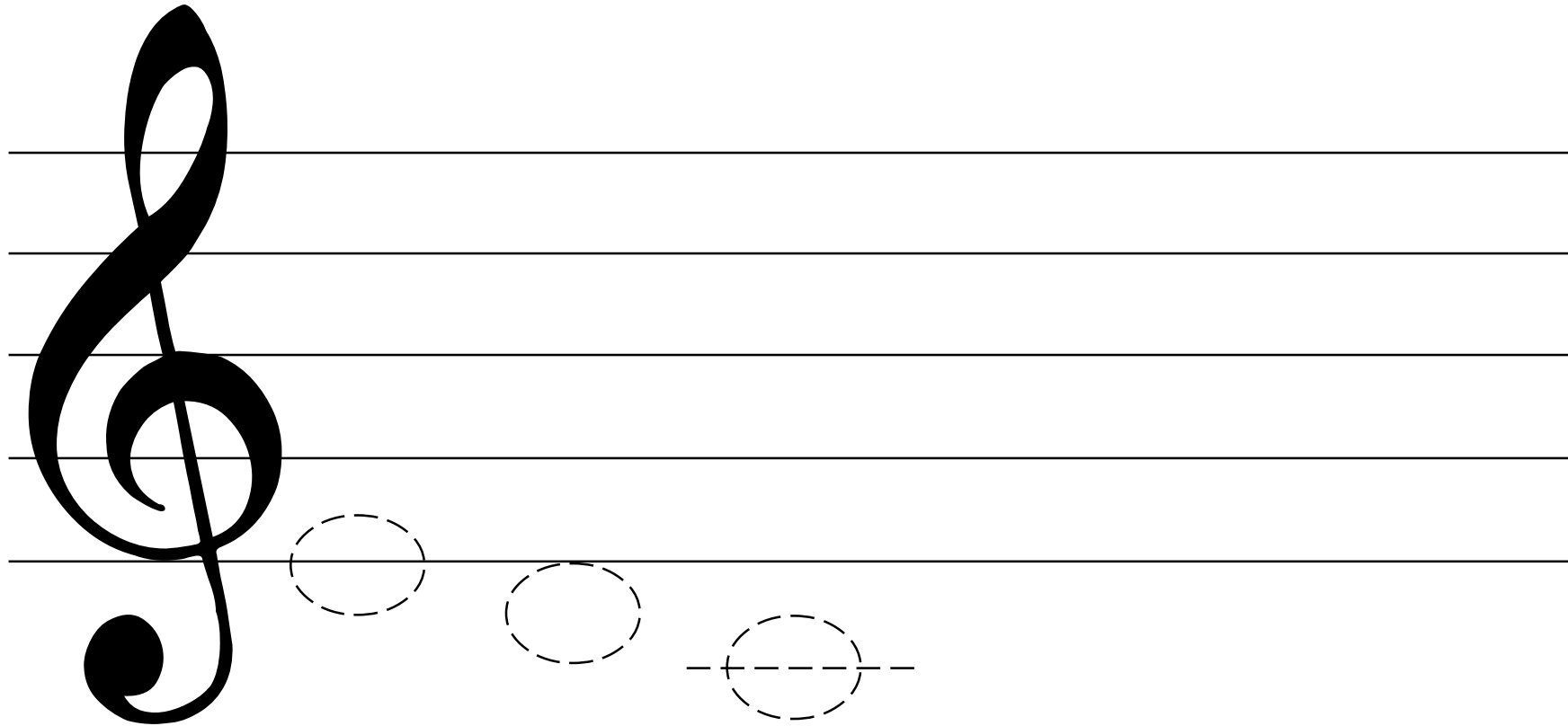


Trace and Draw:



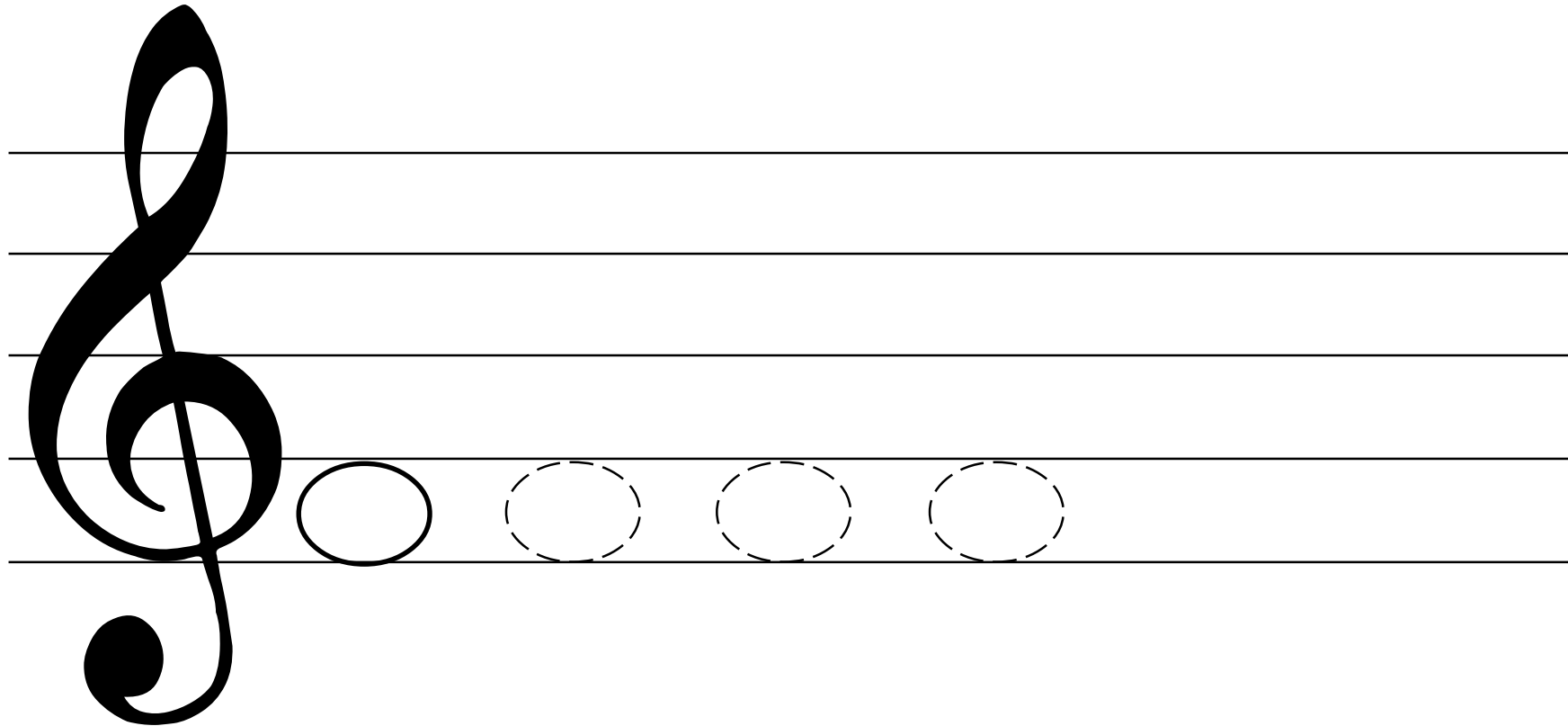
Note Drawing

Trace and Draw:

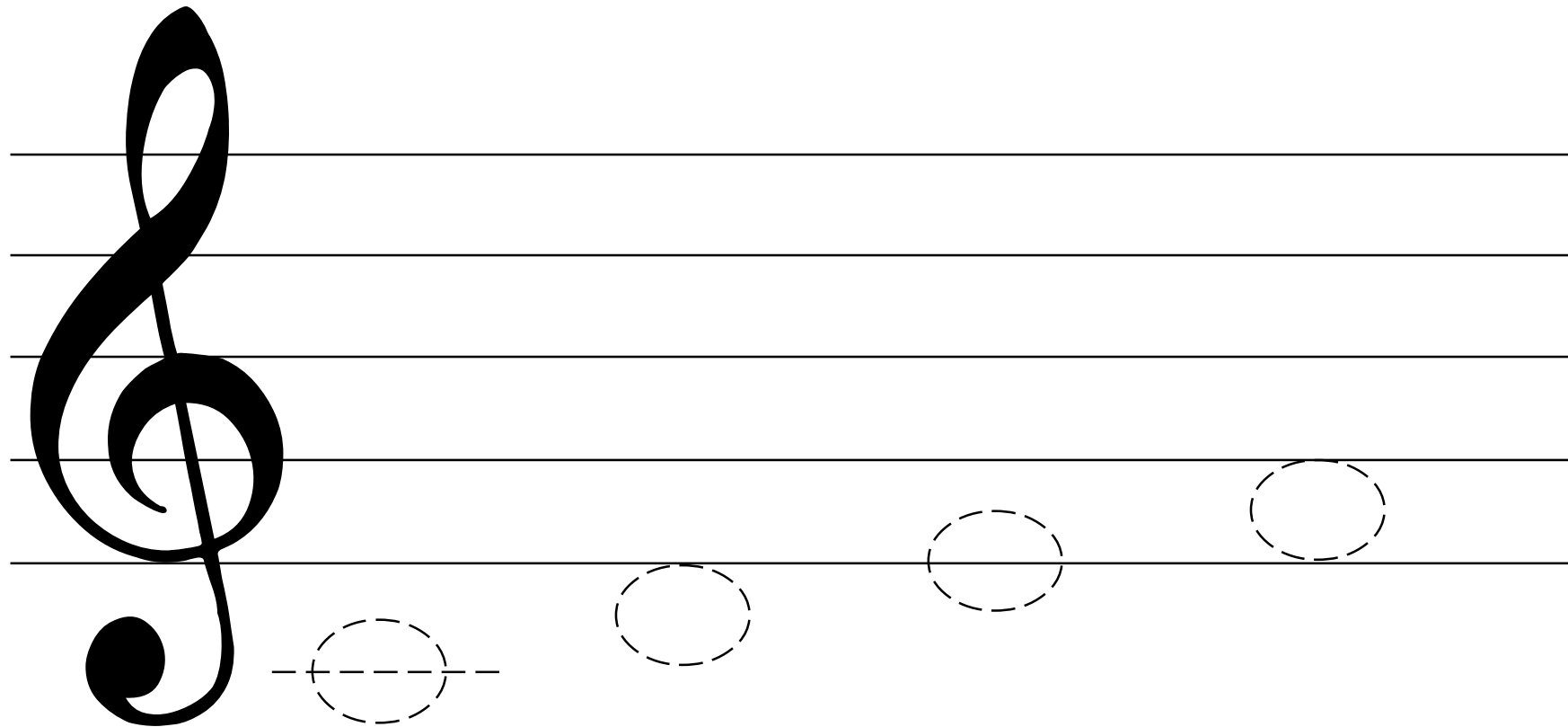


Note Drawing

Trace and Draw:

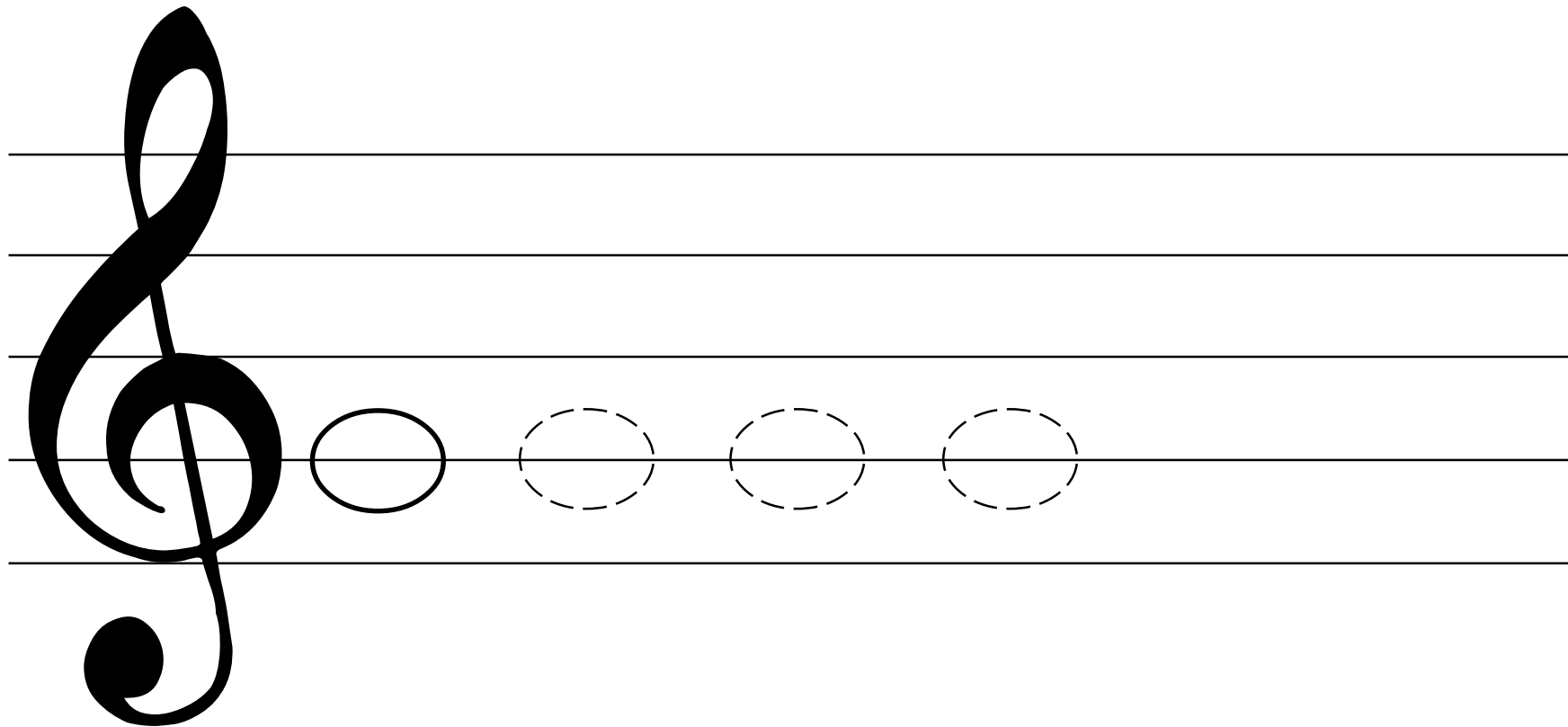


Note Drawing

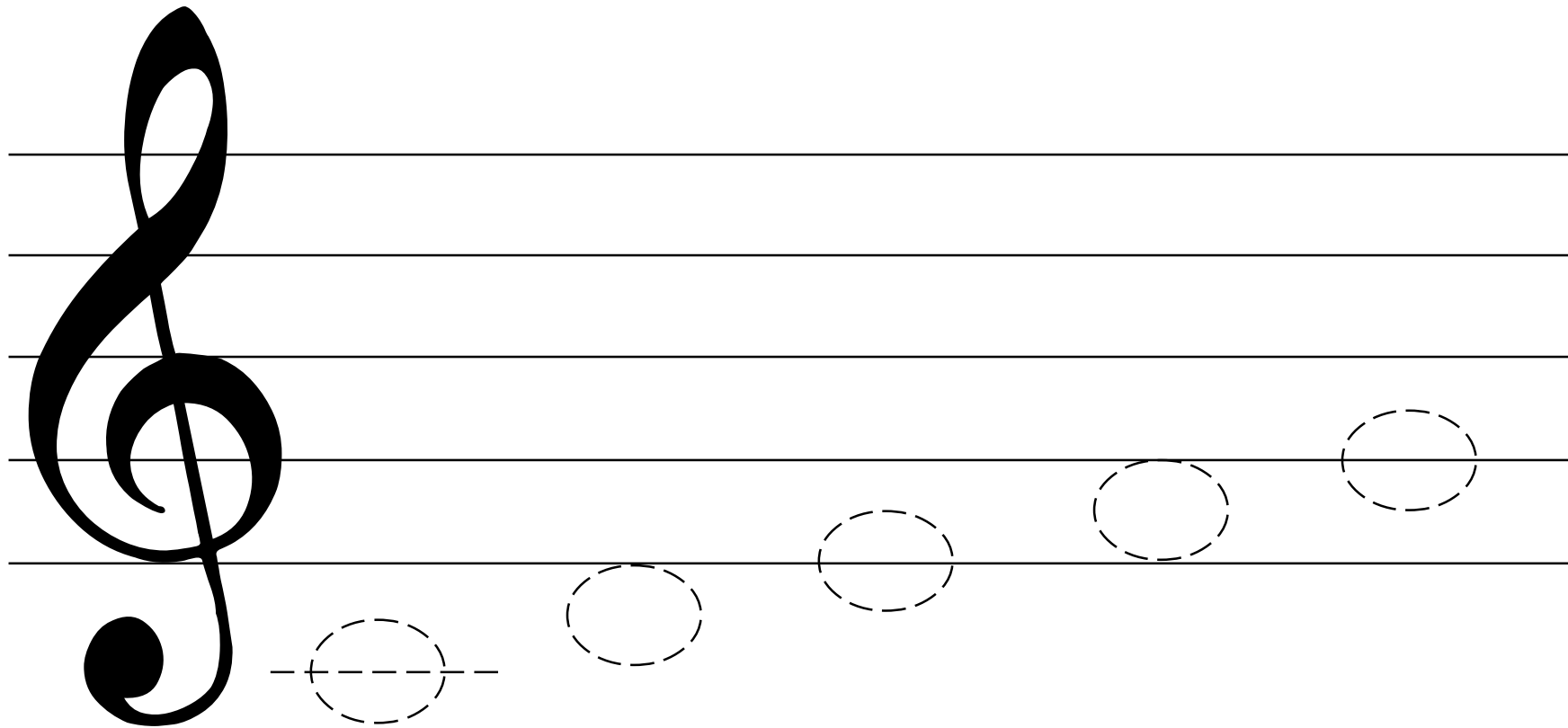


Note Drawing

Trace and Draw:



Note Drawing



Note Drawing



Copy



Note Drawing

Copy

A musical staff with a treble clef, divided into five measures. The notes are: G2 (bottom line), B2 (first space), D3 (second space), F3 (third space), and A3 (fourth space).

A blank musical staff with a treble clef, divided into five empty measures for copying the notes from the staff above.

Note Drawing



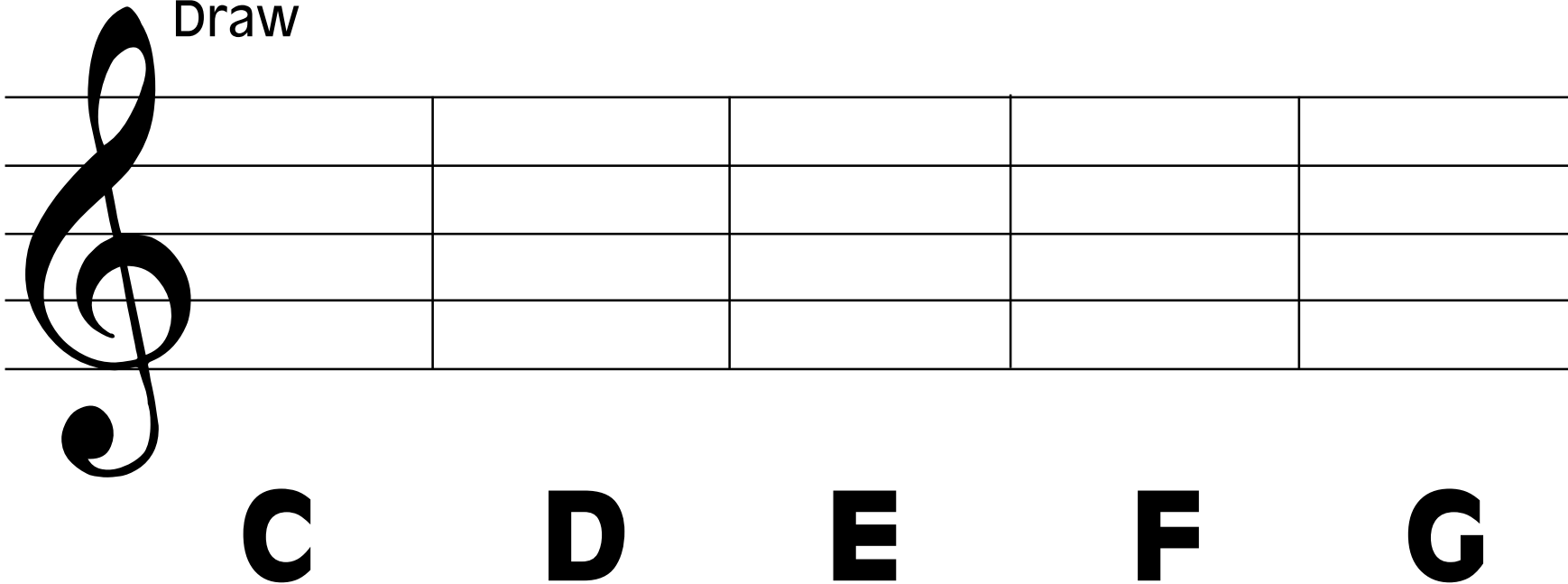
Copy

A musical staff with a treble clef, divided into five measures. The first measure contains a whole note on the second line. The second, third, fourth, and fifth measures each contain a whole note on the first space, second line, third space, and fourth space respectively.

A blank musical staff with a treble clef, divided into five measures, intended for copying the notes from the staff above.

Note Drawing

Draw

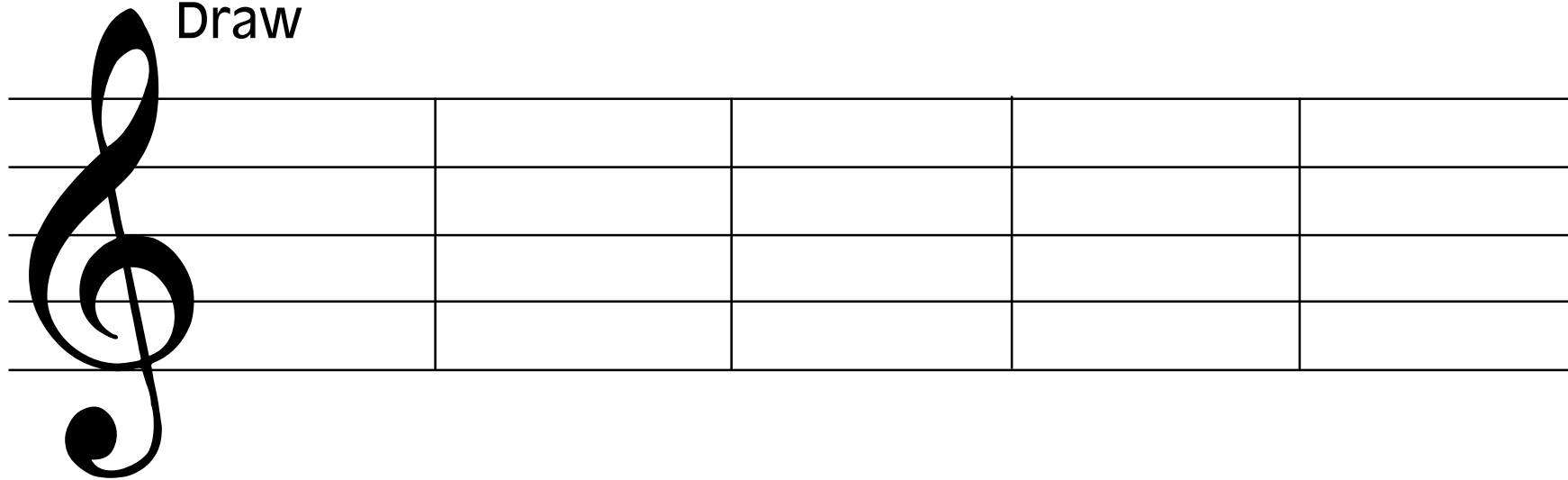


C **D** **E** **F** **G**

Note Drawing



Draw



E

D

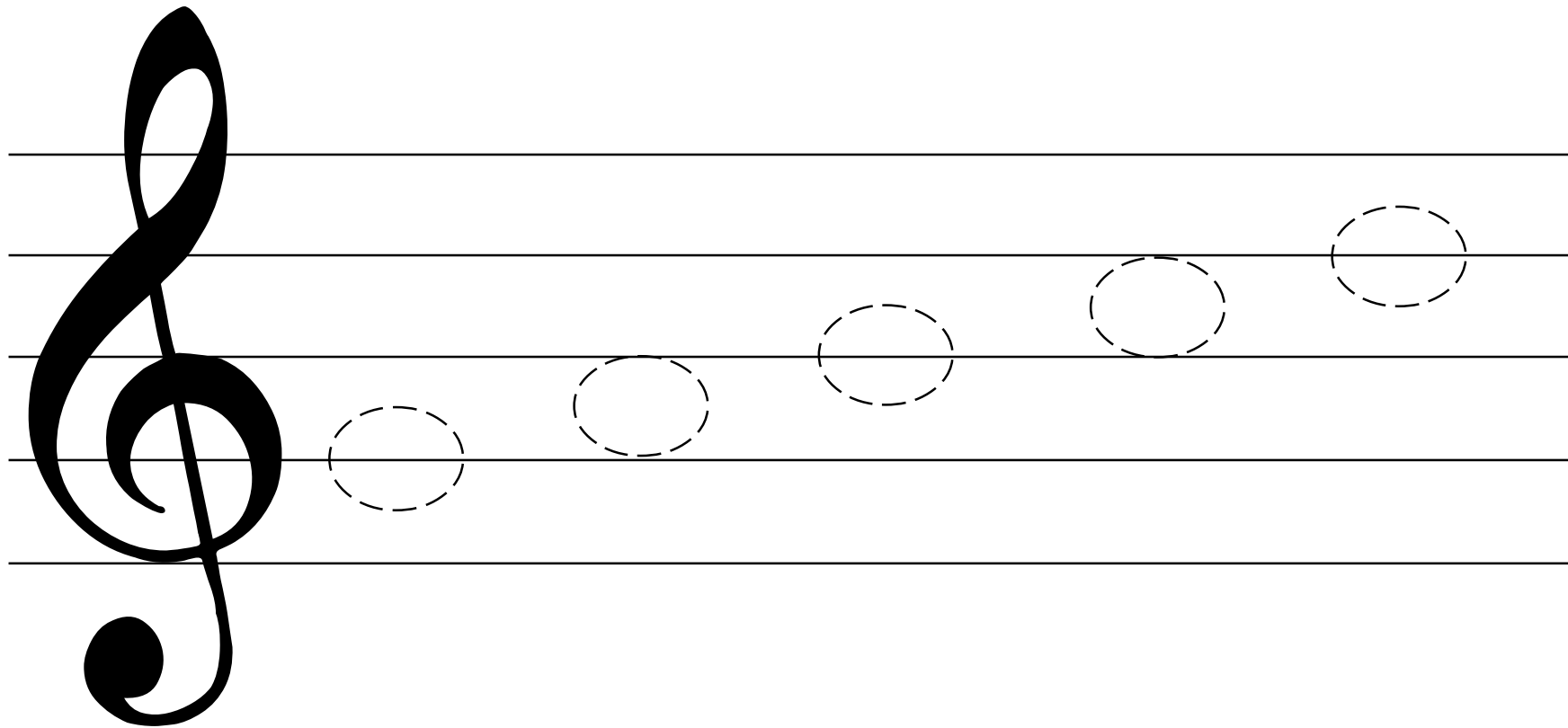
F

G

C



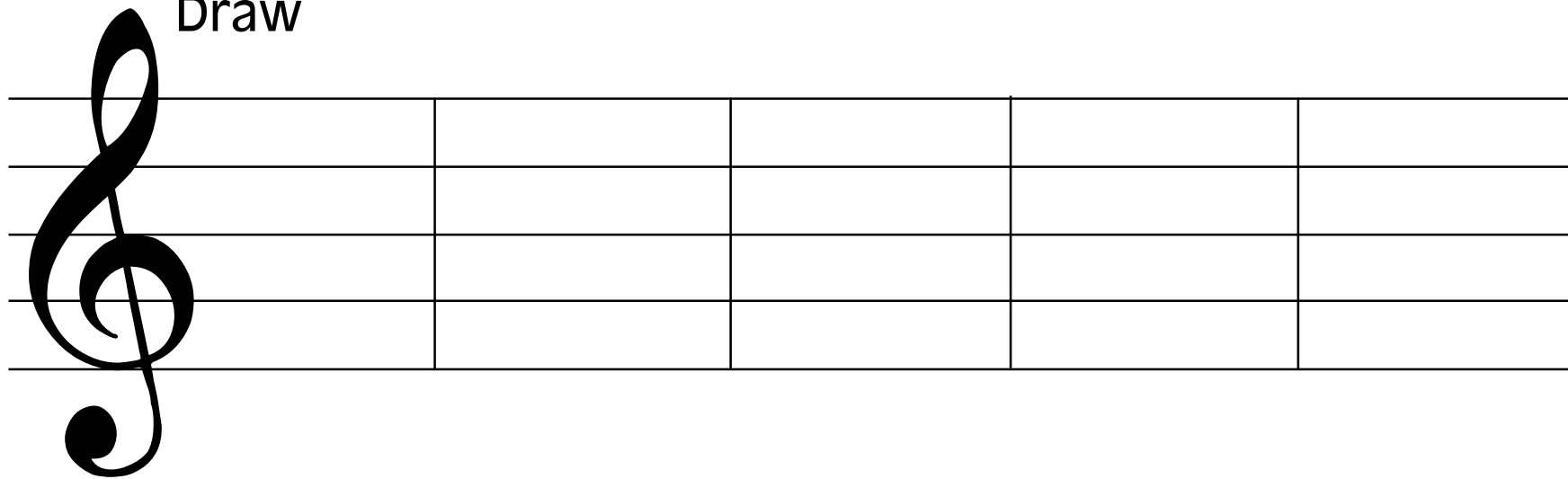
Note Drawing



Note Drawing



Draw



G

A

B

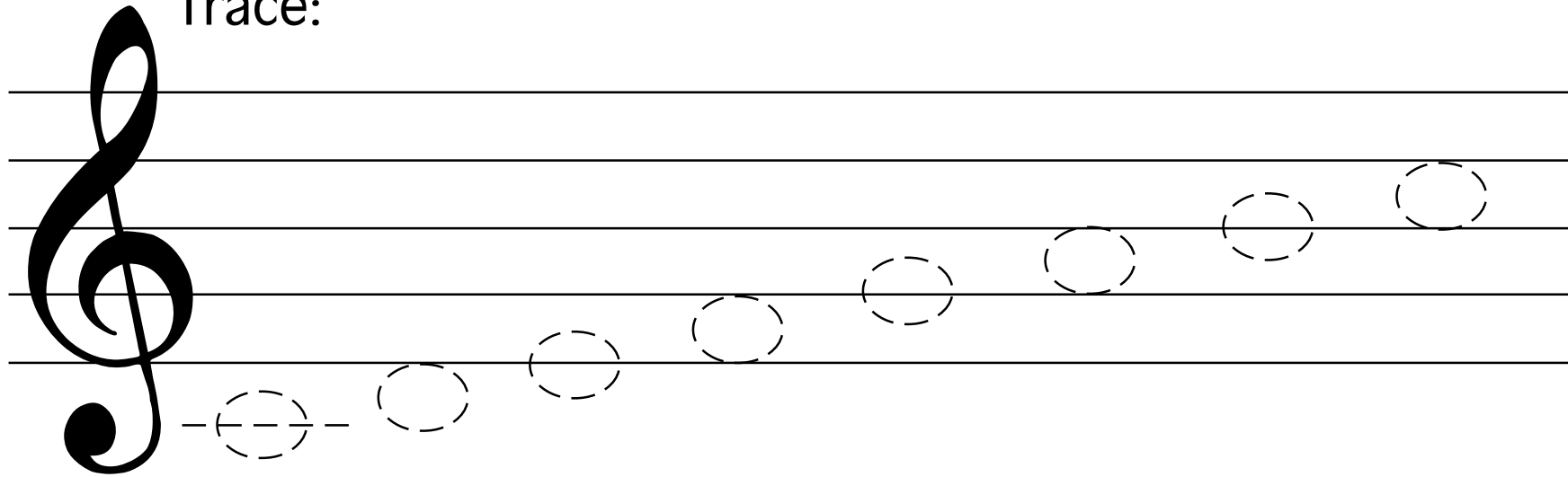
C

D

Note Drawing



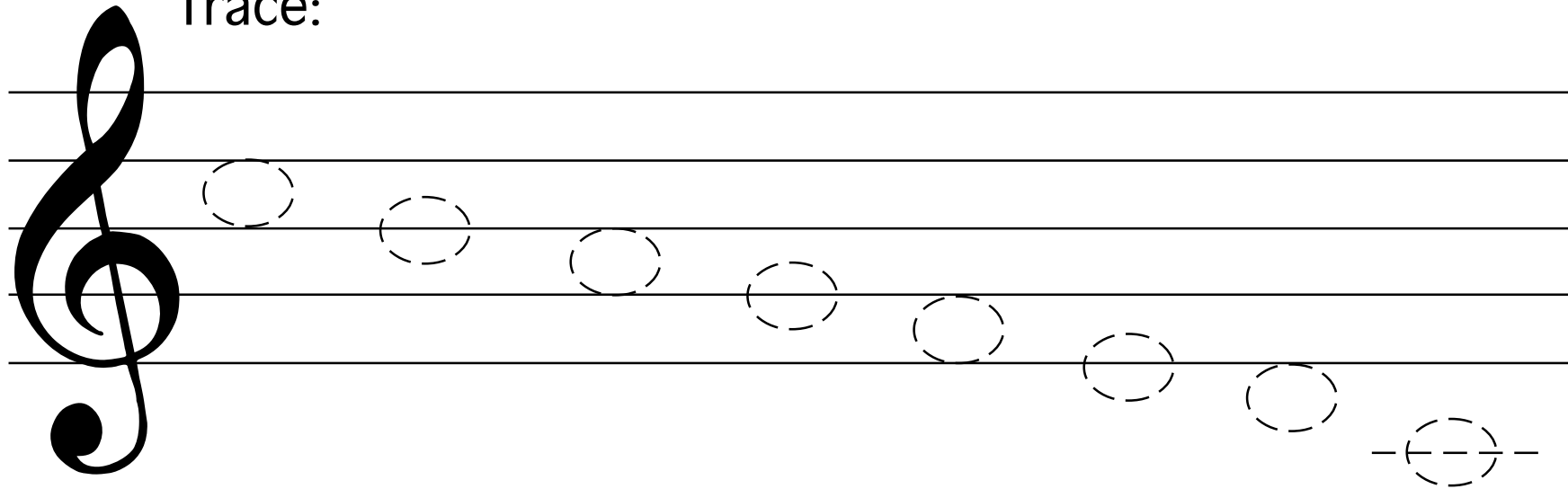
Trace:



Note Drawing



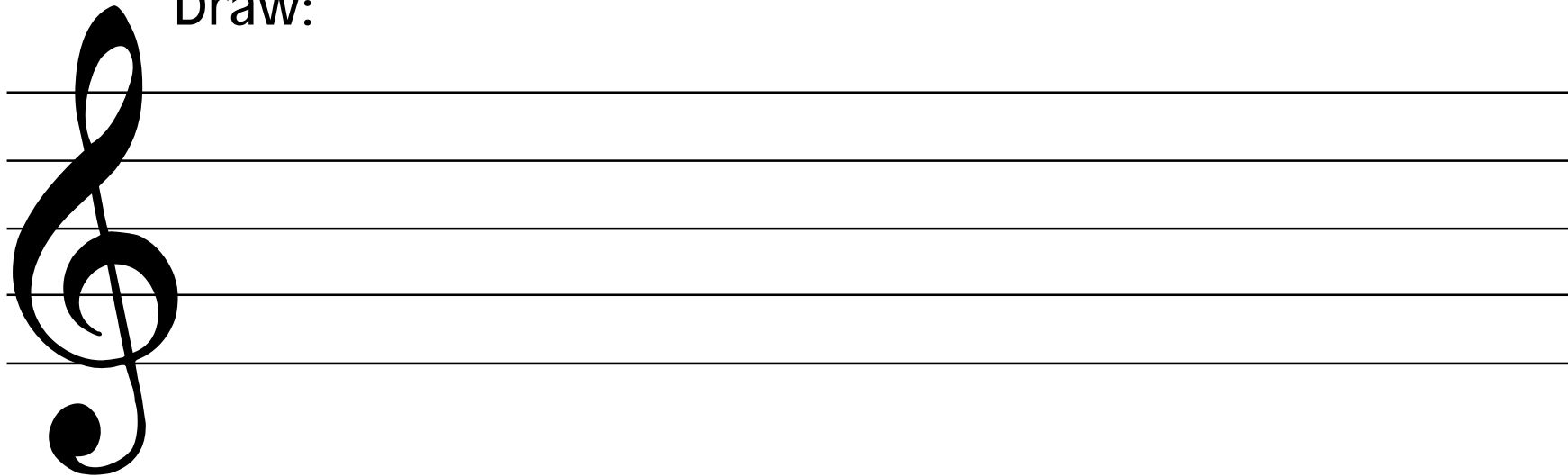
Trace:



Note Drawing



Draw:



Middle

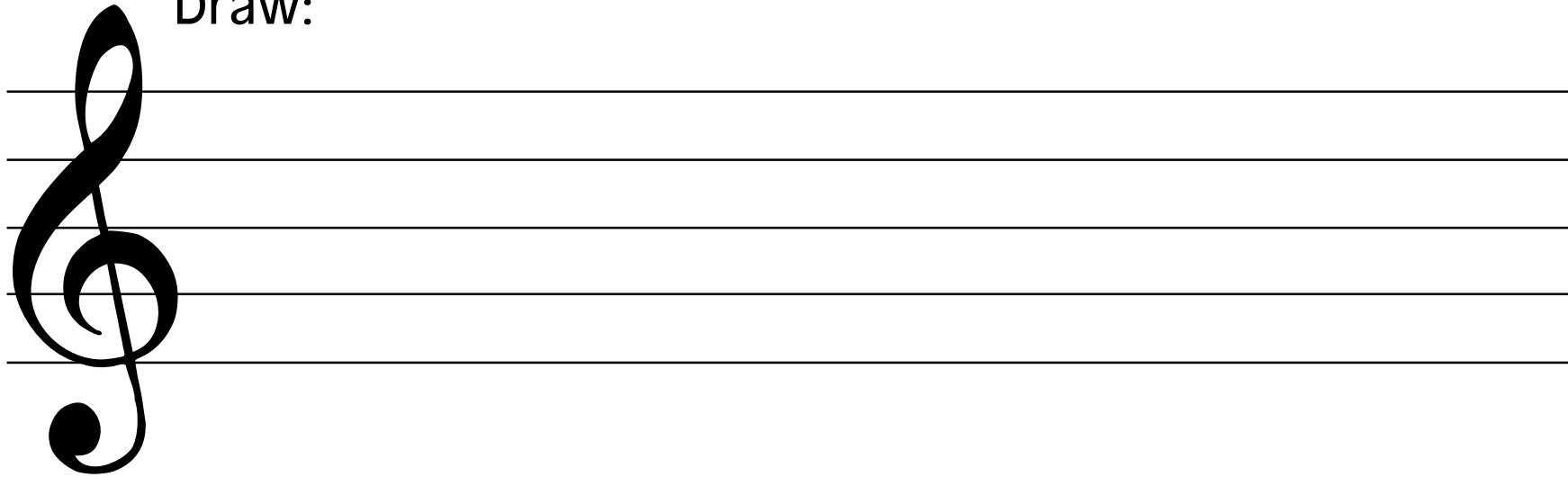
C D E F G A B C

High

Note Drawing



Draw:



F **G** **E** **A** ^{Middle} **C** ^{High} **C** **D** **B**

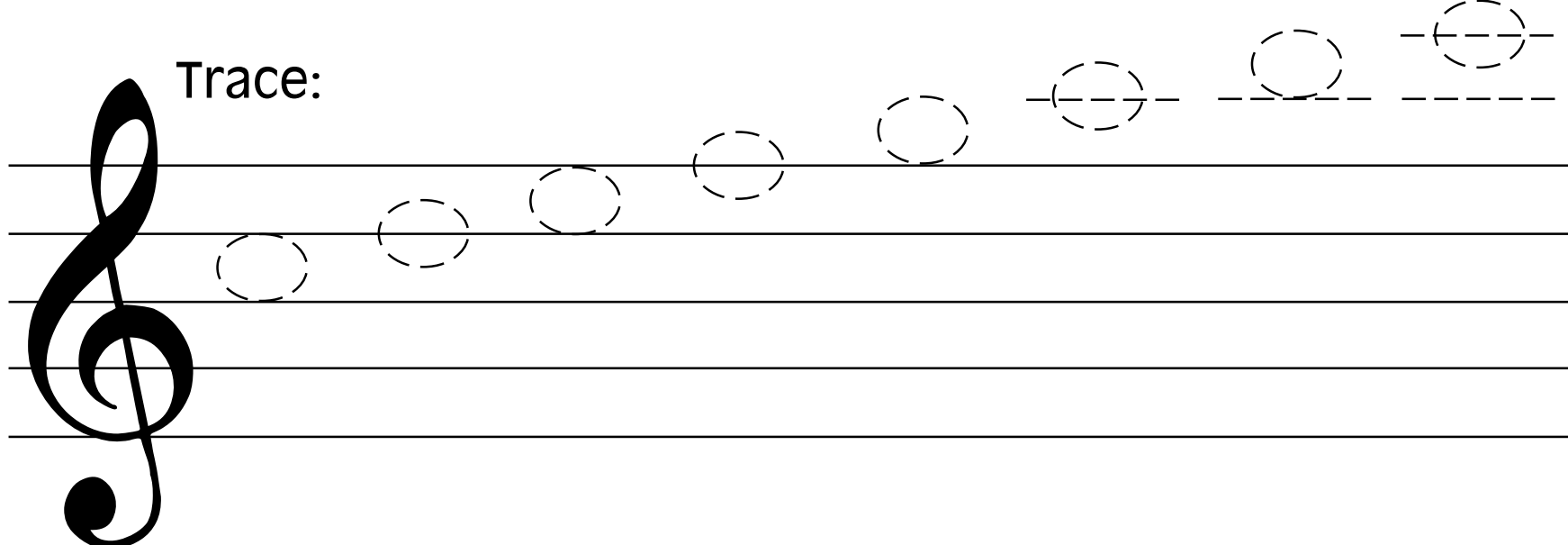
Note Drawing



Trace & Copy

Note Drawing

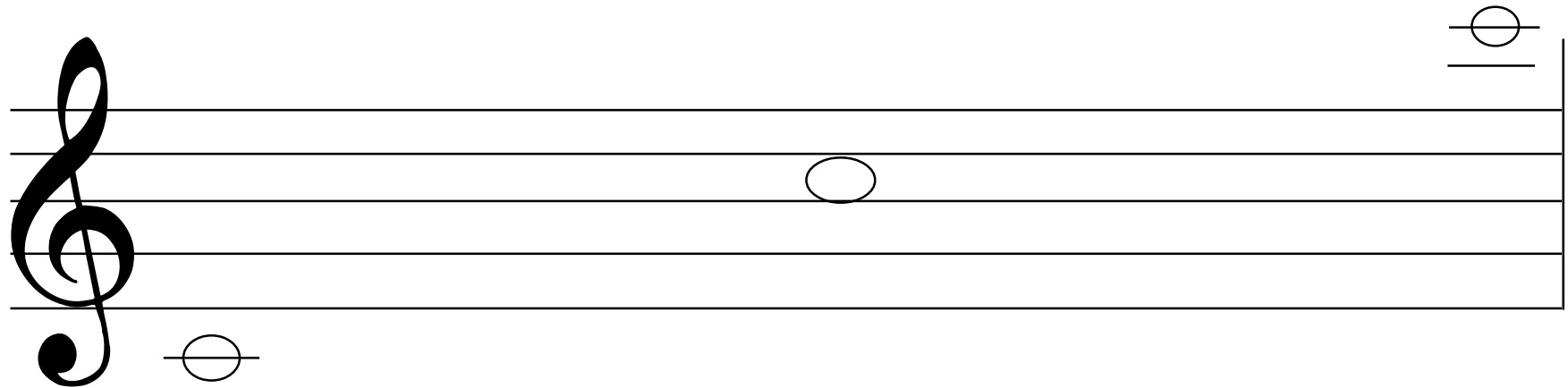
Trace:



The image shows a musical staff with a treble clef on the left. Above the staff, the word "Trace:" is written. Seven dashed musical notes are arranged in an ascending sequence across the staff. The first note is on the first line, the second on the second line, the third on the second space, the fourth on the third line, the fifth on the third space, the sixth on the fourth line, and the seventh on the fourth space. Each note consists of a dashed circle with a dashed horizontal line through its center representing the stem.

Note Drawing

Fill In the Gaps:



Note Drawing



Trace & Draw:

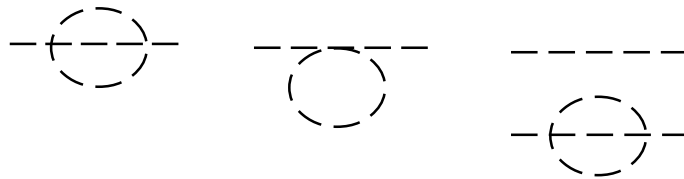
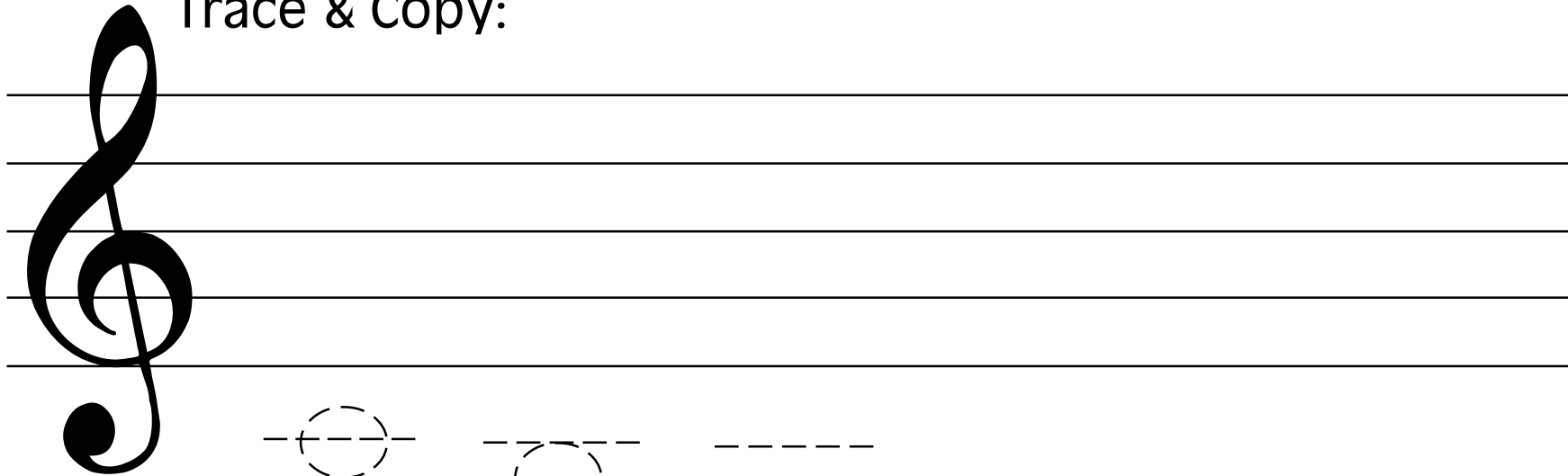
C

B

Note Drawing

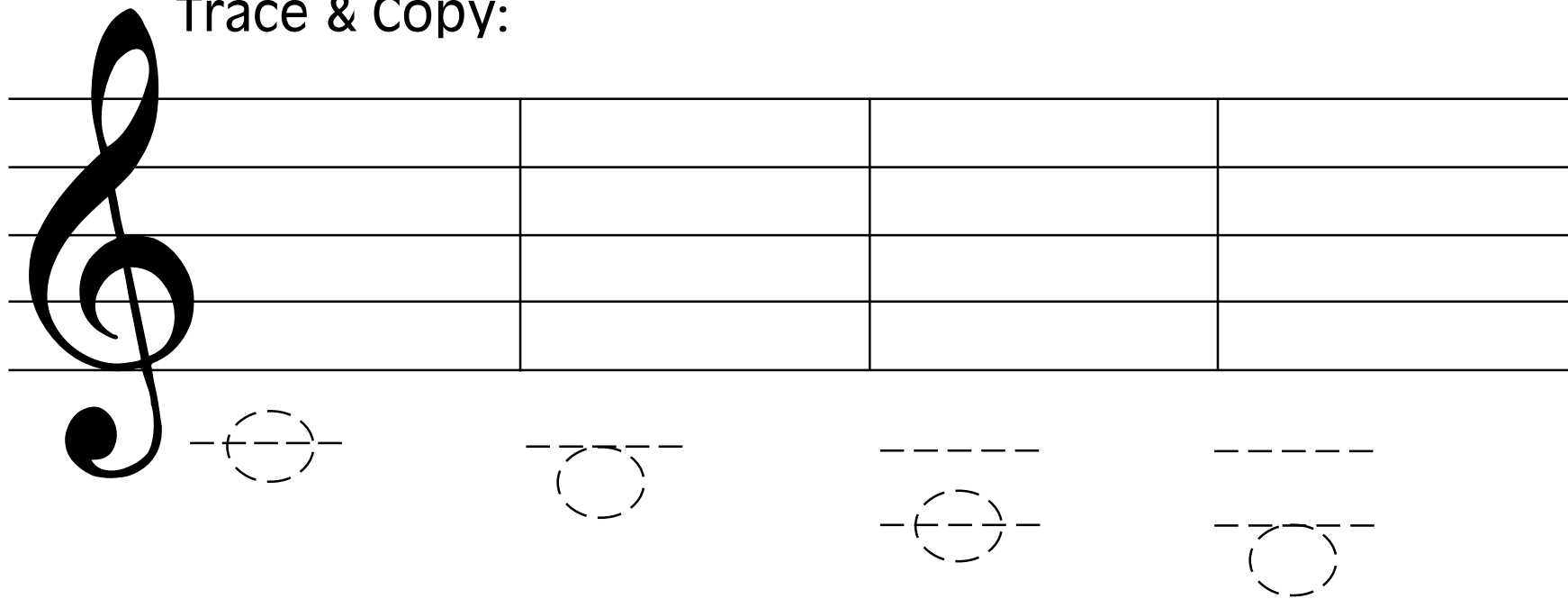


Trace & Copy:



Note Drawing

Trace & Copy:



Note Drawing

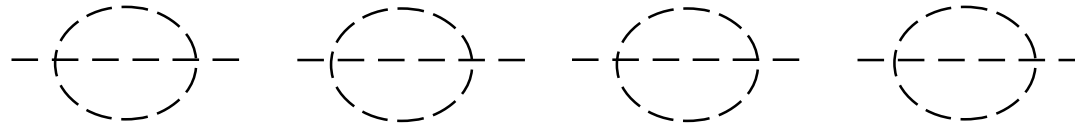


Trace and Draw:



Note Drawing




Trace and Draw:



Note Drawing



Trace & Draw:





C

D



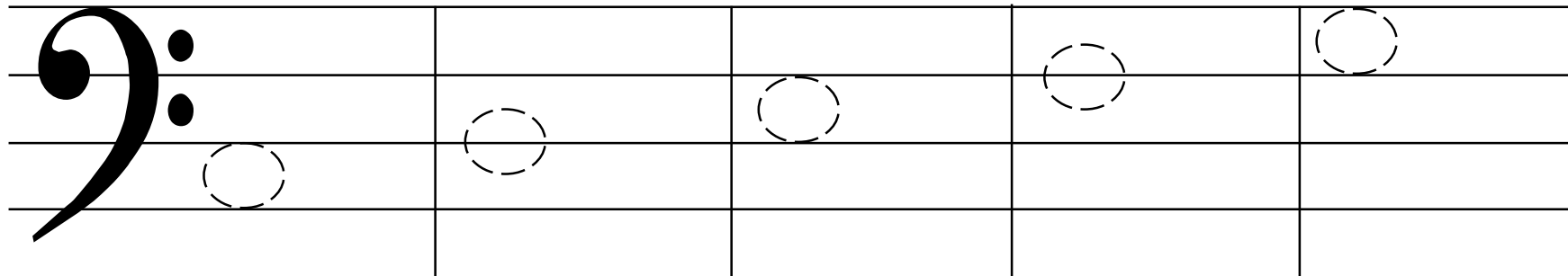
Note Drawing

Trace & Copy

Note Drawing

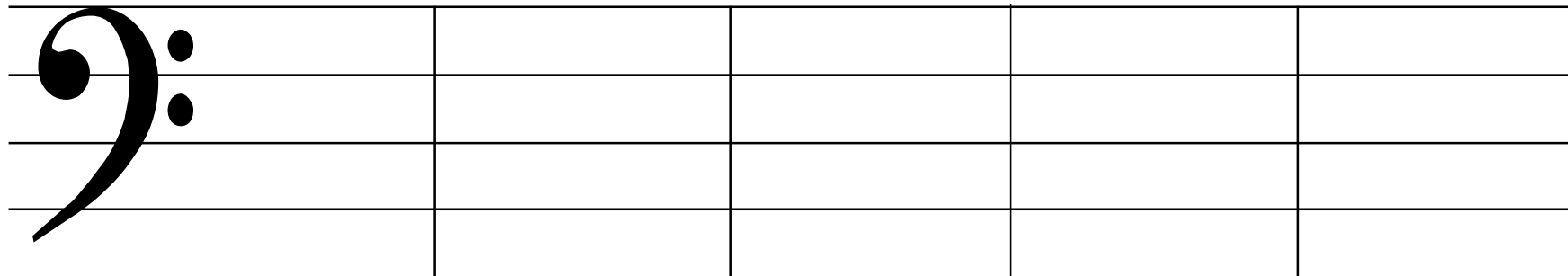
Trace & Copy:



A musical staff with a bass clef on the left. The staff is divided into five measures by vertical lines. The notes are represented by dashed circles: the first measure has a note on the second line from the bottom; the second measure has a note on the second space from the bottom; the third measure has a note on the third line from the bottom; the fourth measure has a note on the third space from the bottom; and the fifth measure has a note on the fourth line from the bottom.

Note Drawing

Draw:



C

D

E


F

G



Note Drawing

Draw:

D

F

E

G

C

Note Drawing



Trace:

A musical staff with a bass clef on the left. Five dashed musical notes are placed on the staff for tracing. The notes are positioned on the top line, the first space, the second line, the second space, and the third line from the top.

Note Drawing

Draw:



Middle

C

B

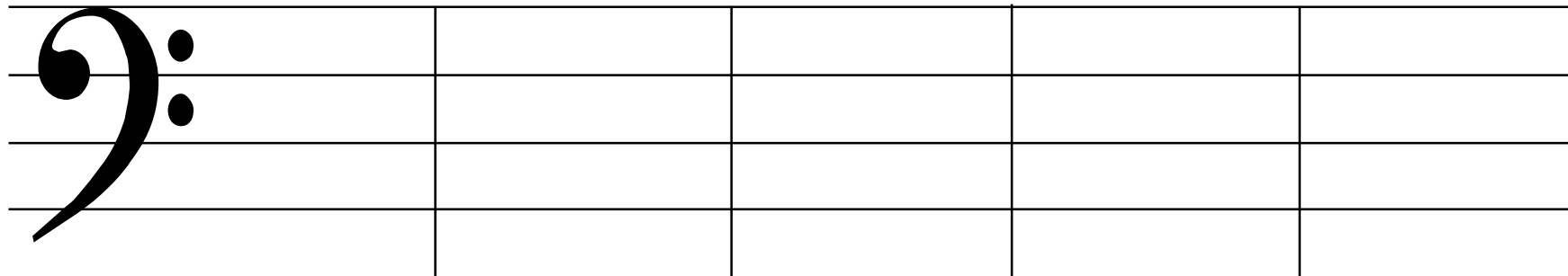
A

G

F

Note Drawing

Draw:

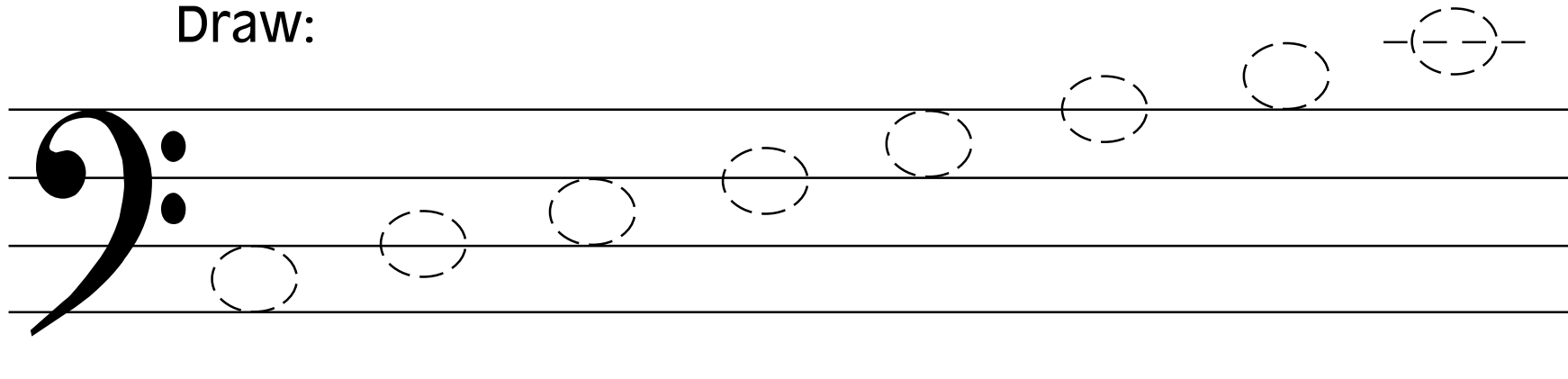


F **A** **B** **Middle**
C **G**

Note Drawing



Draw:



Note Drawing

Draw:



C D E F G A B C ^{Middle}

Note Drawing

Draw:

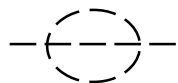


F **B** **D** **E** **Low C** **G** **Middle C** **A**



Note Drawing

Trace & Draw:



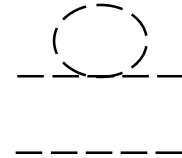
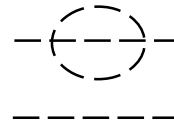
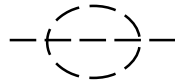
C

D

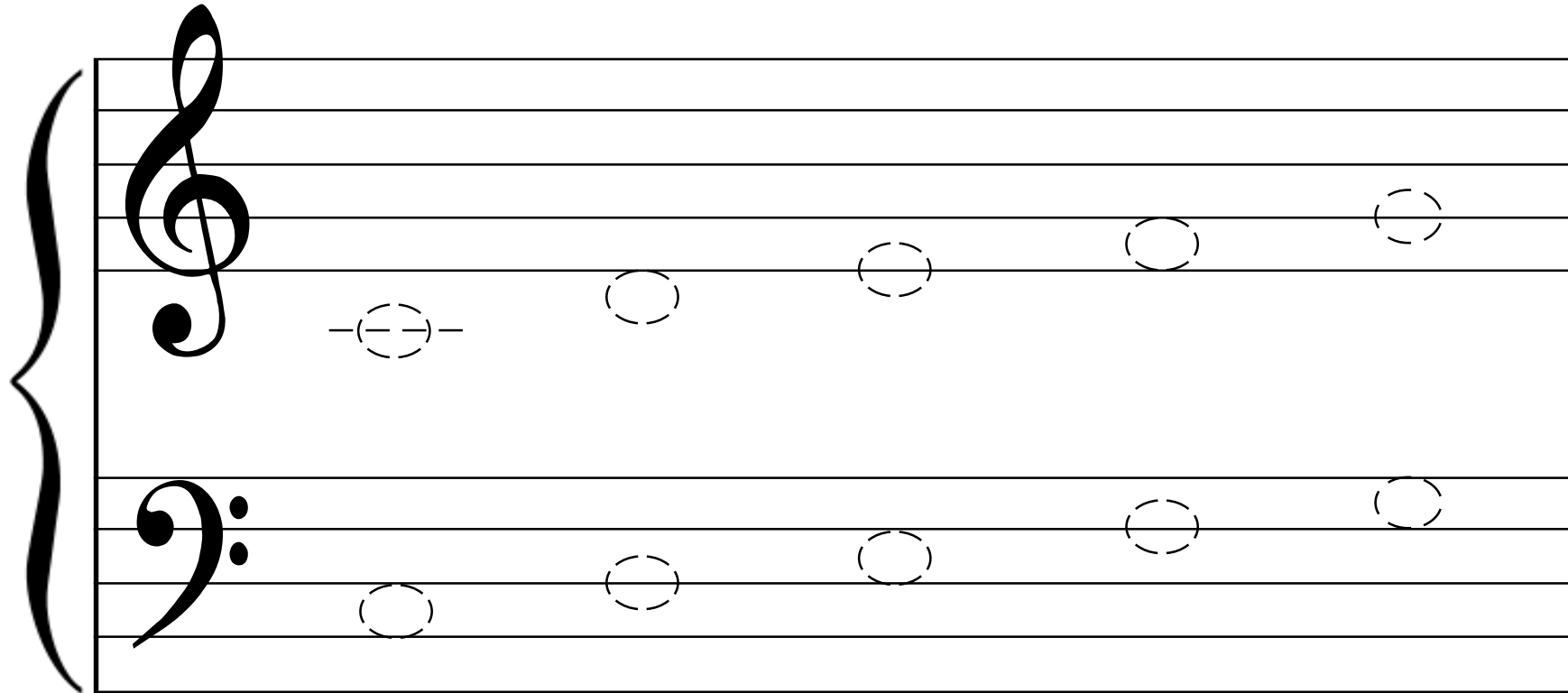


Note Drawing

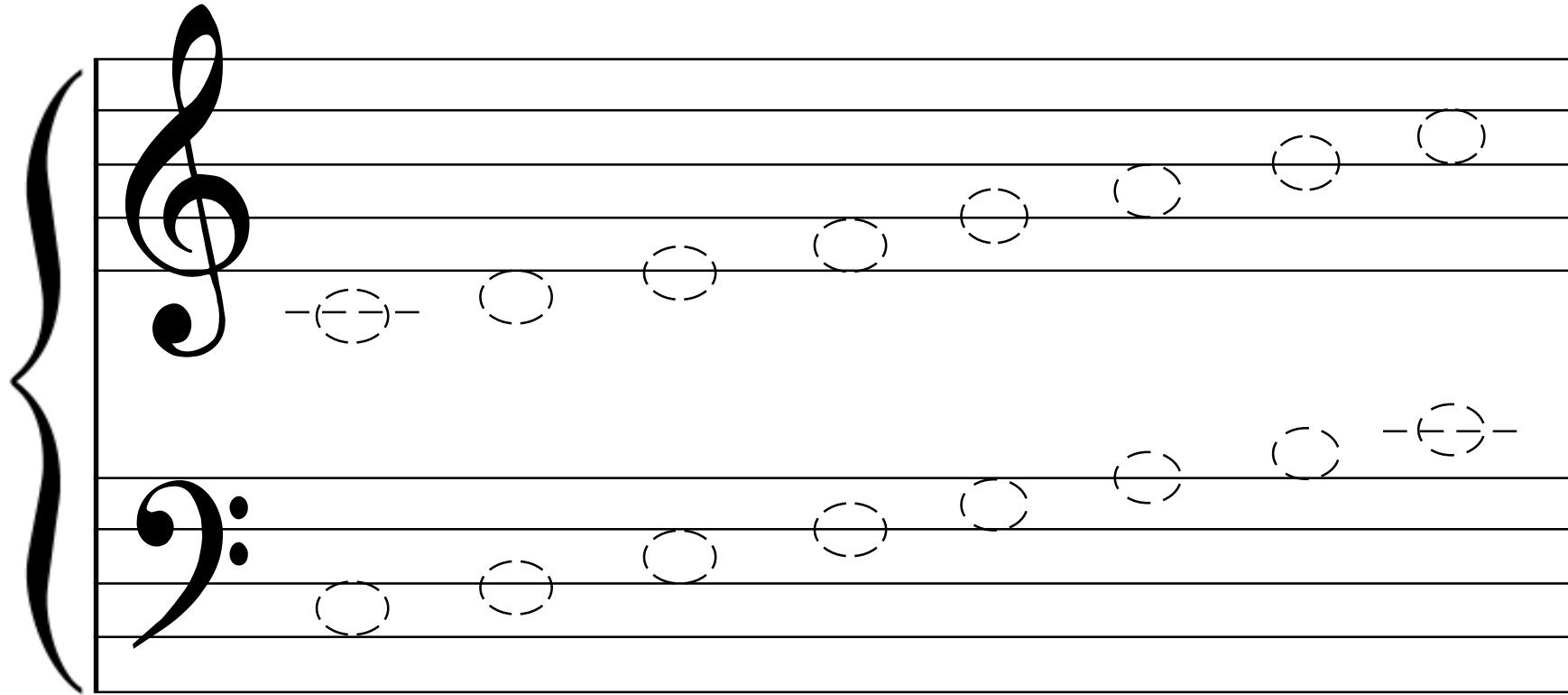
Trace:



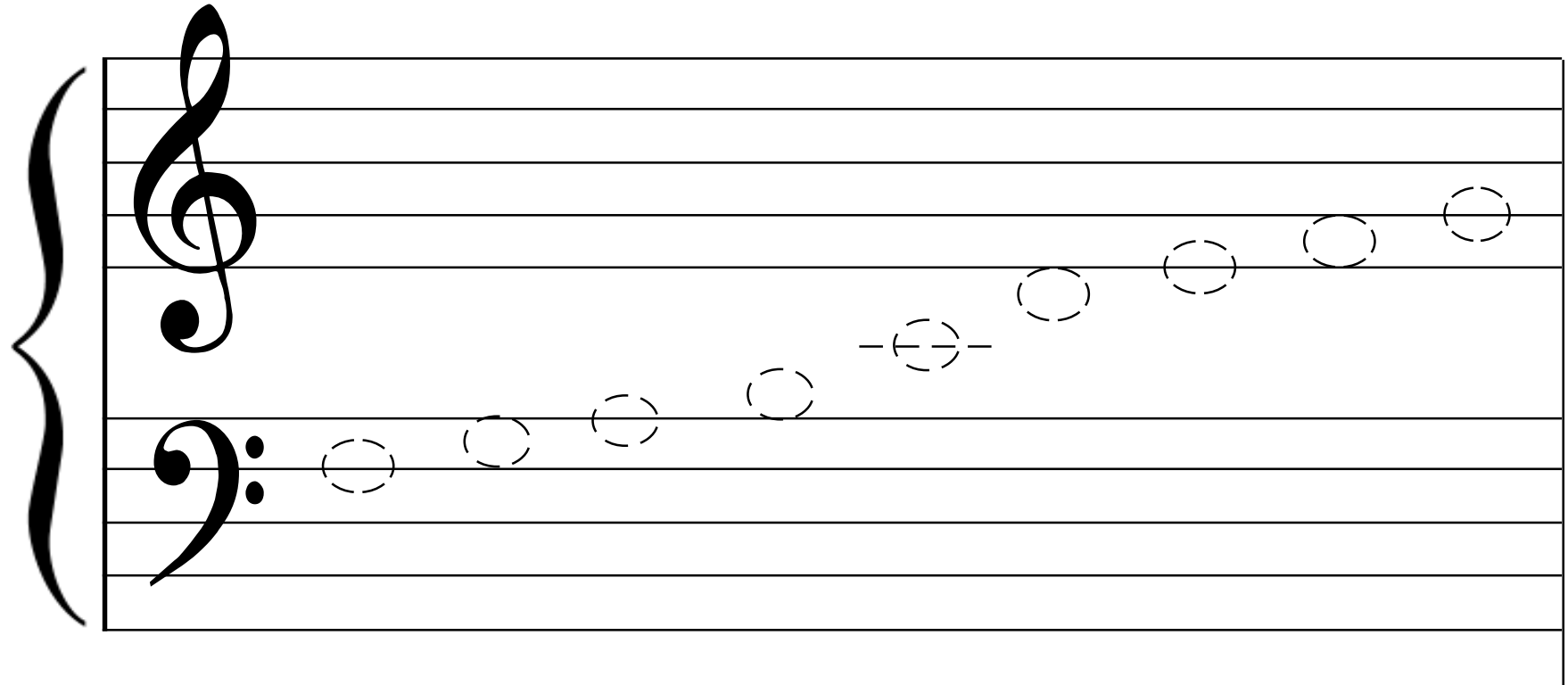
Note Drawing



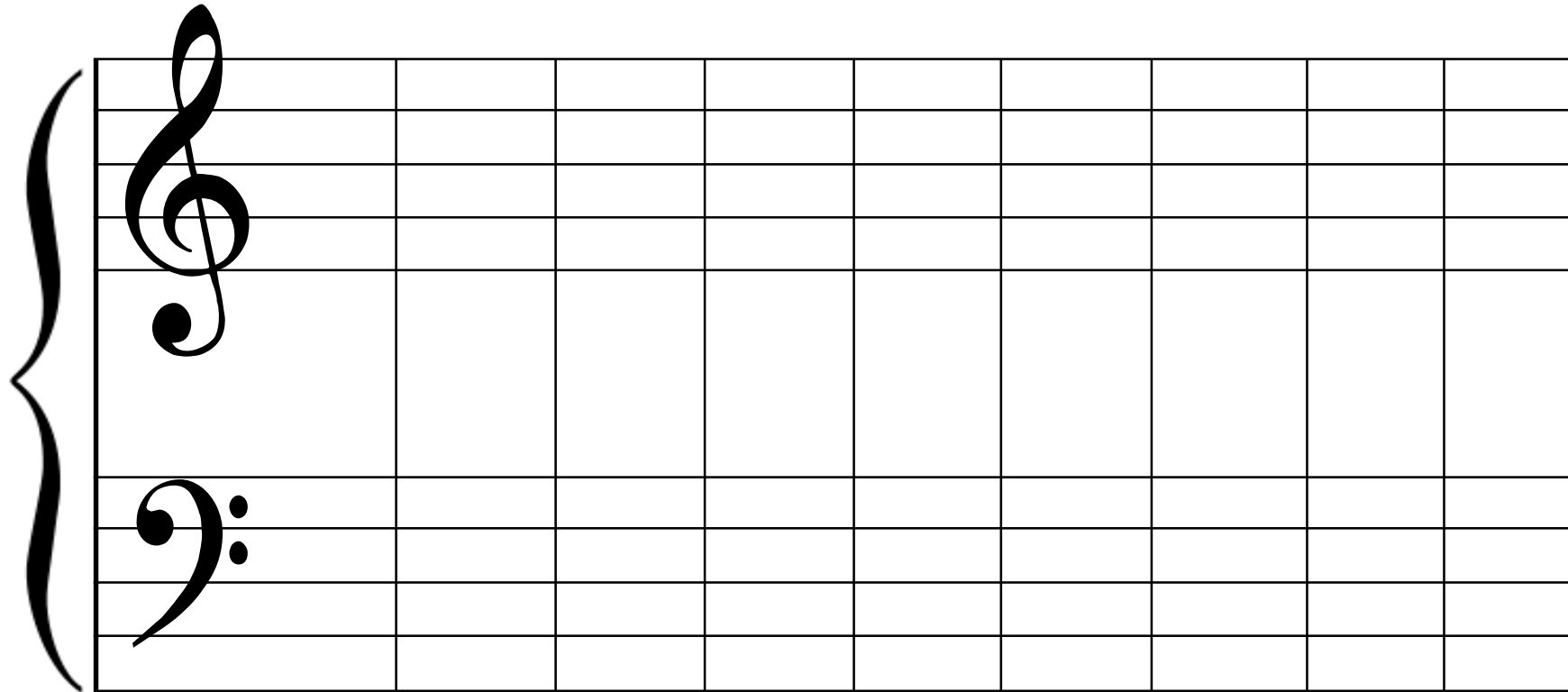
Note Drawing



Note Drawing



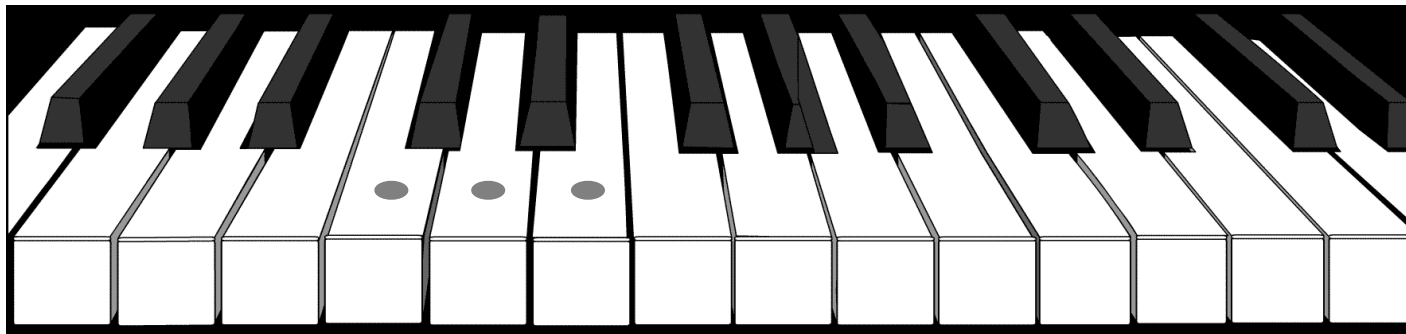
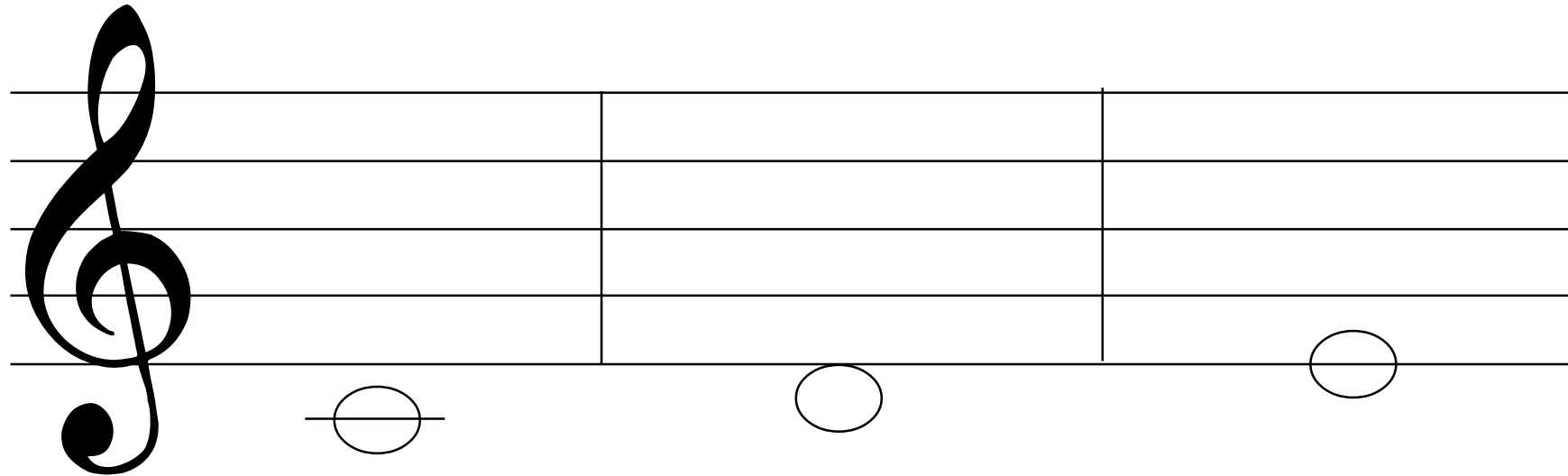
Note Drawing



F G A B C D E F G

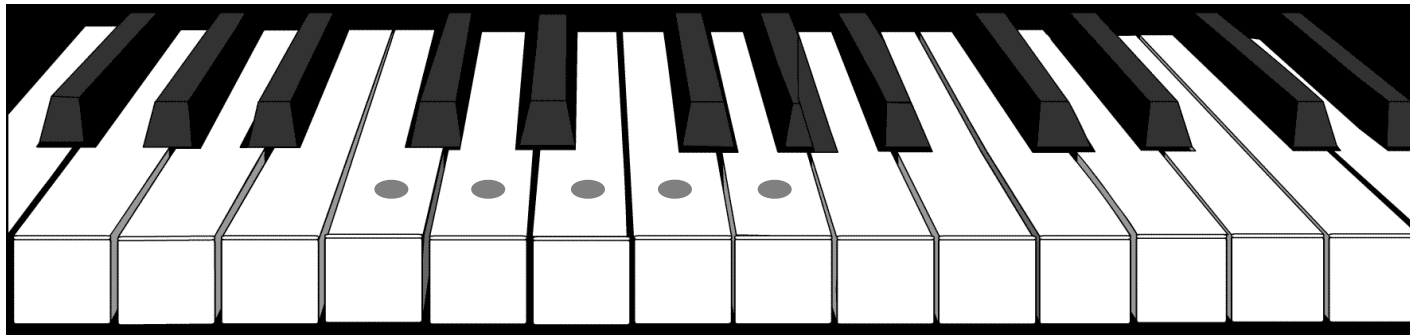
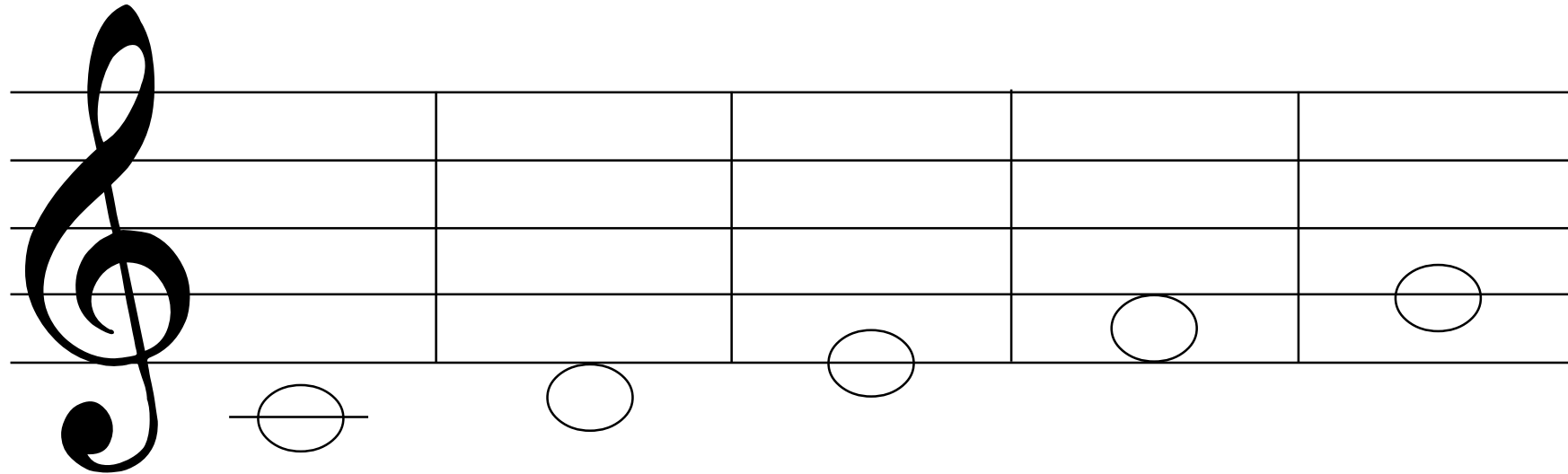


Keyboard Connections



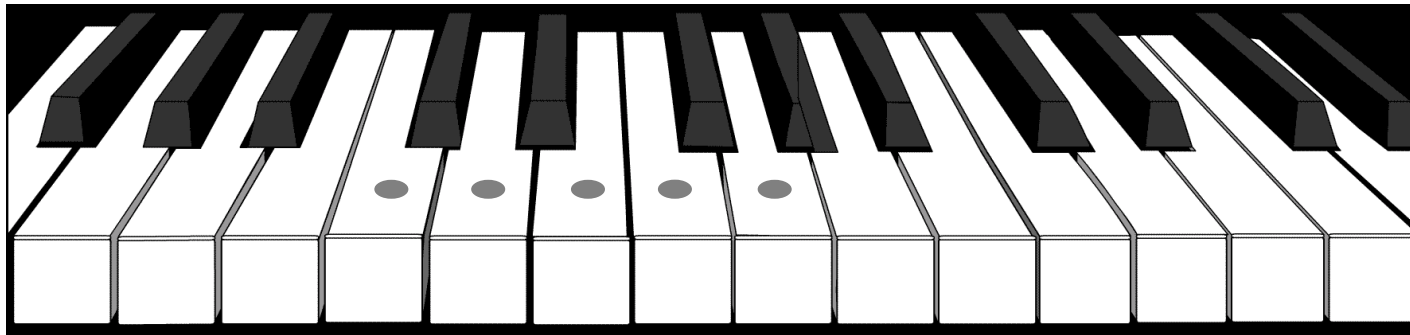
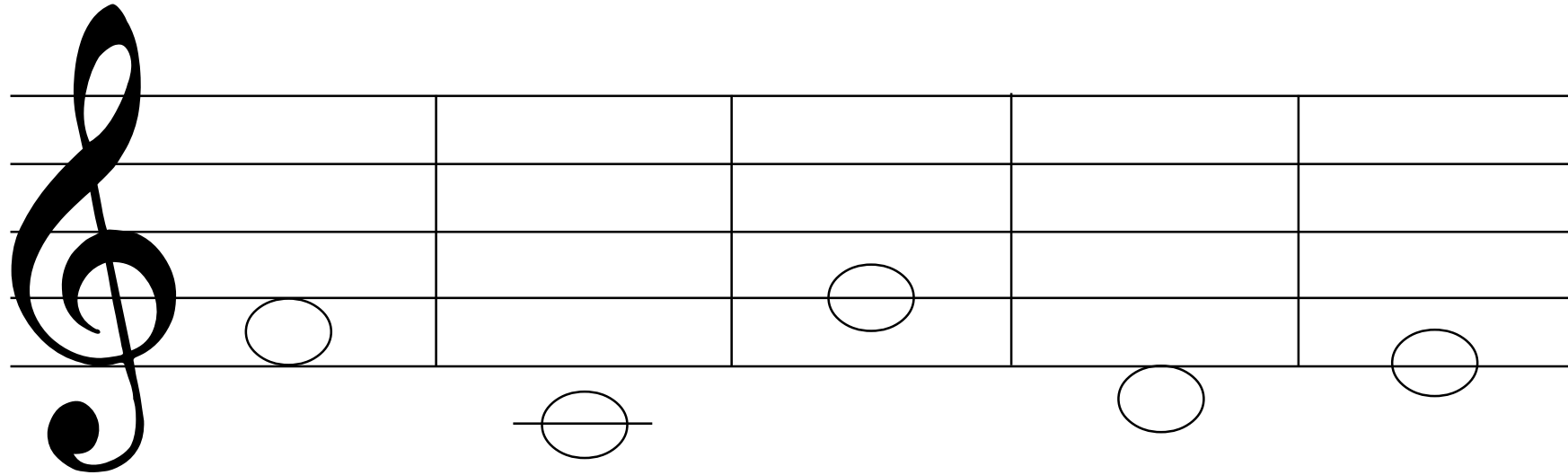


Keyboard Connections



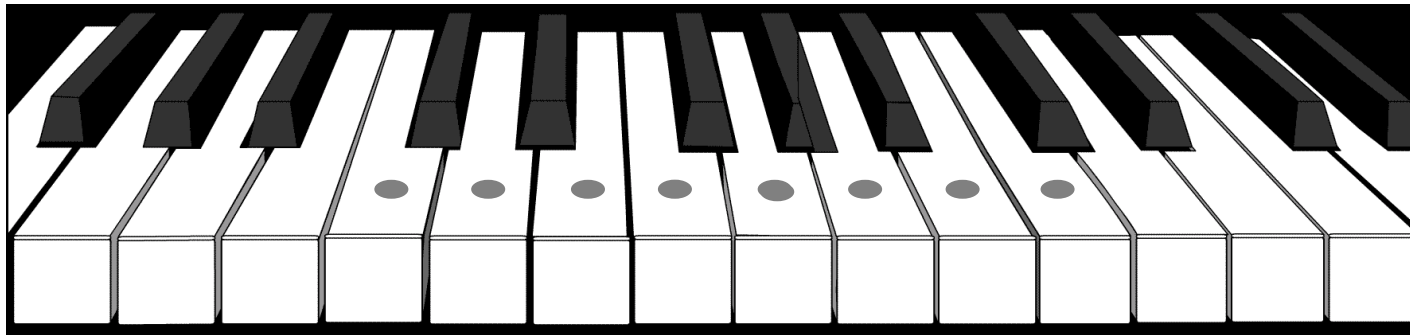
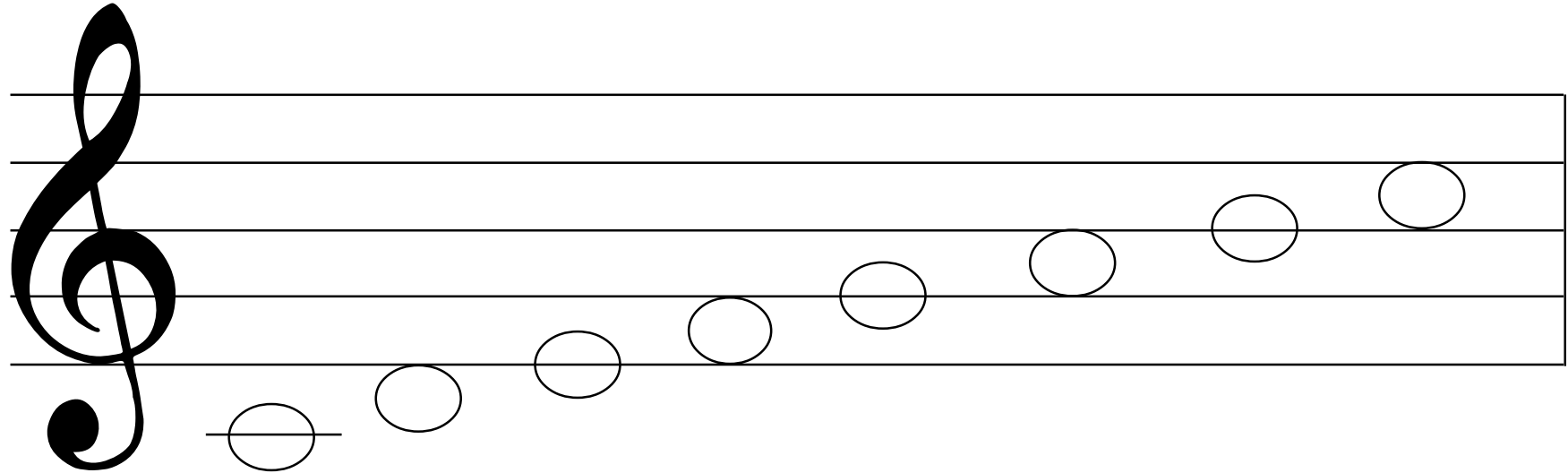


Keyboard Connections



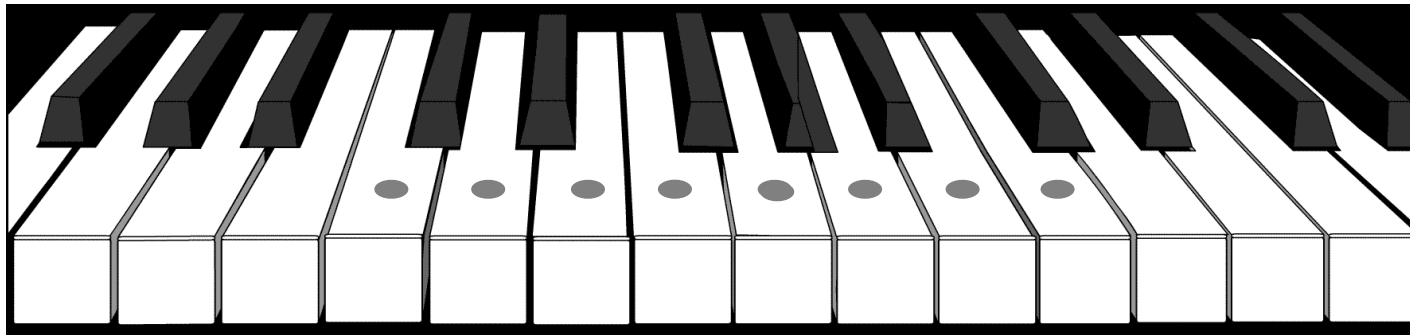
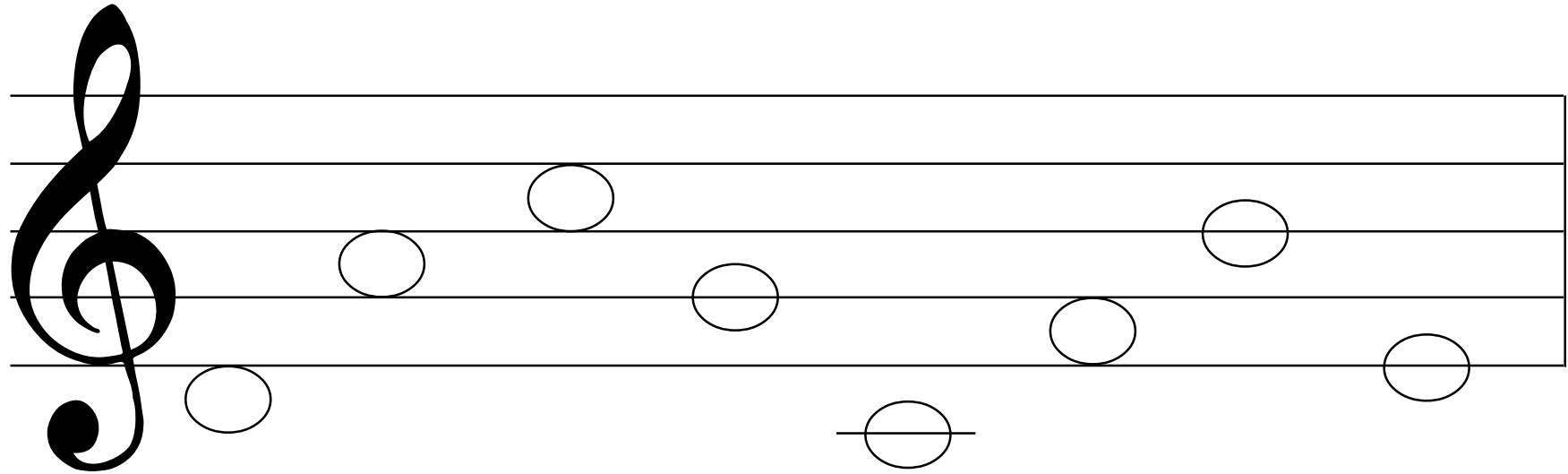


Keyboard Connections



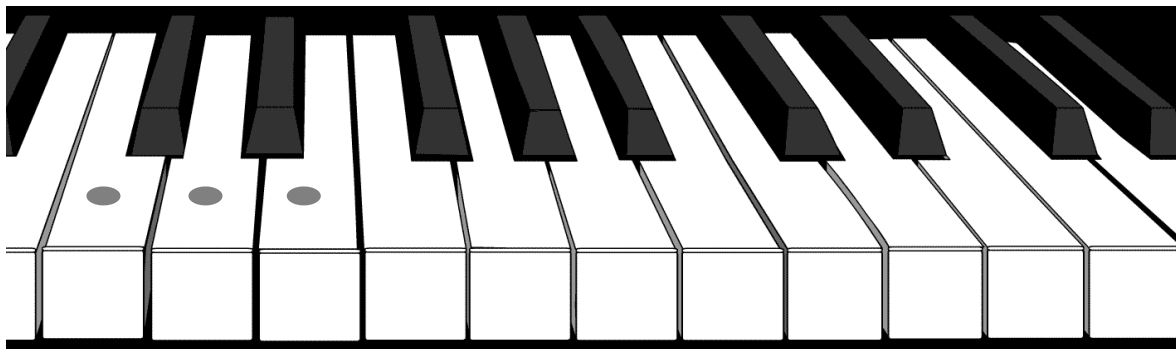
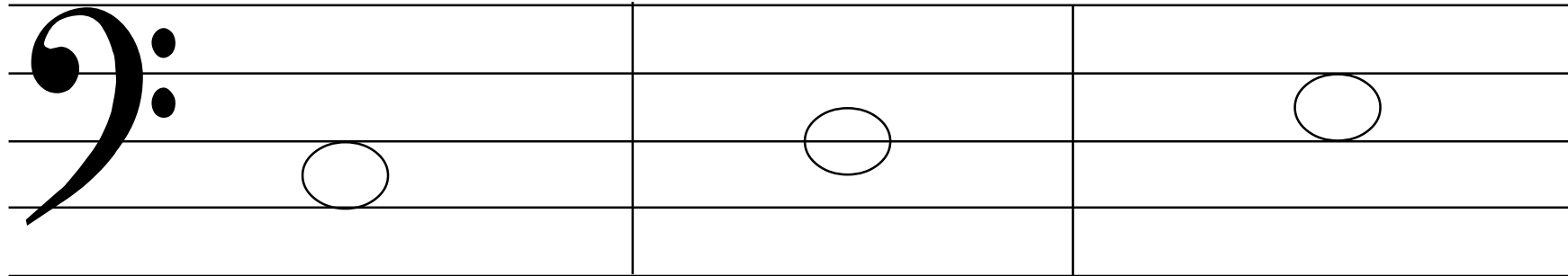


Keyboard Connections



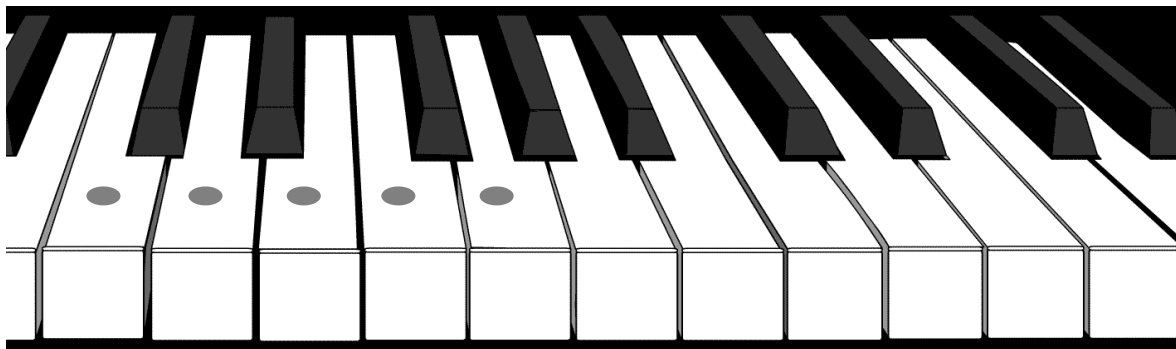
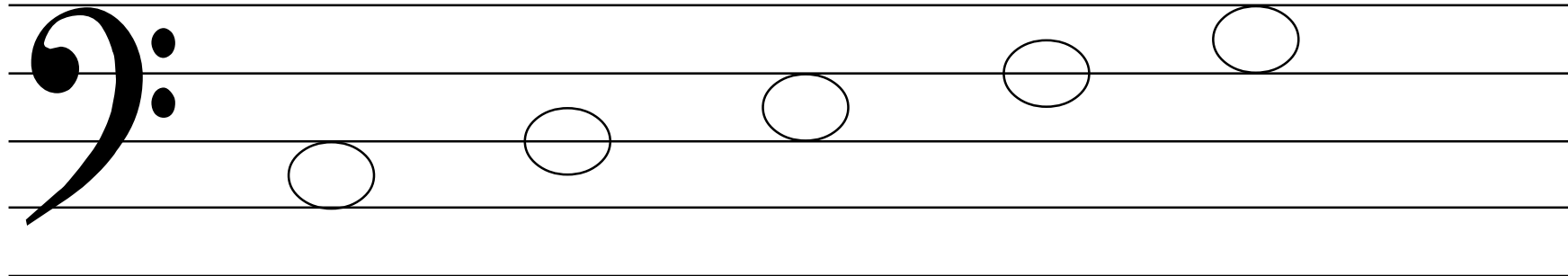


Keyboard Connections



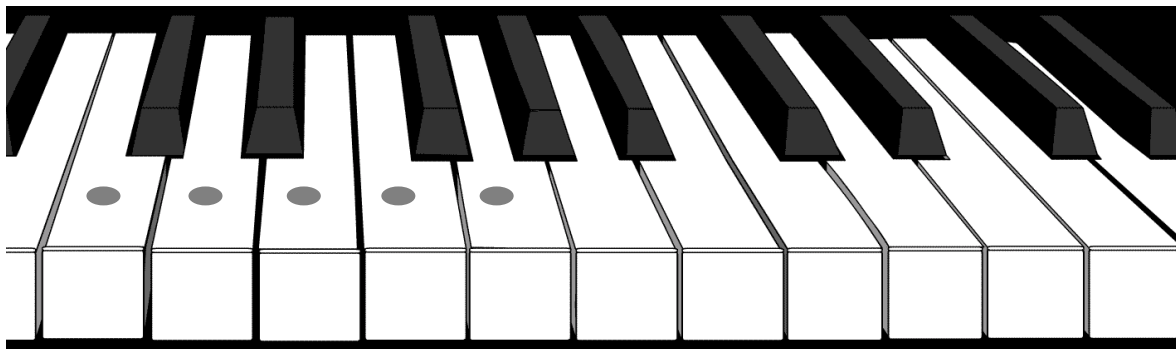
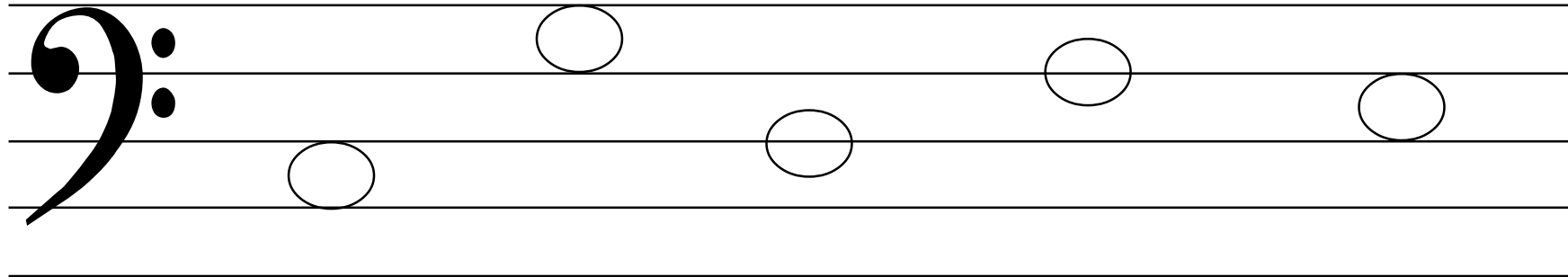


Keyboard Connections



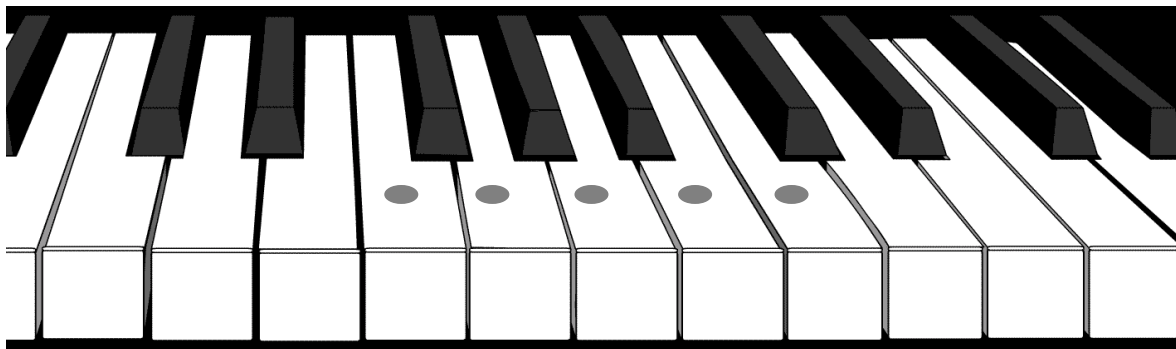
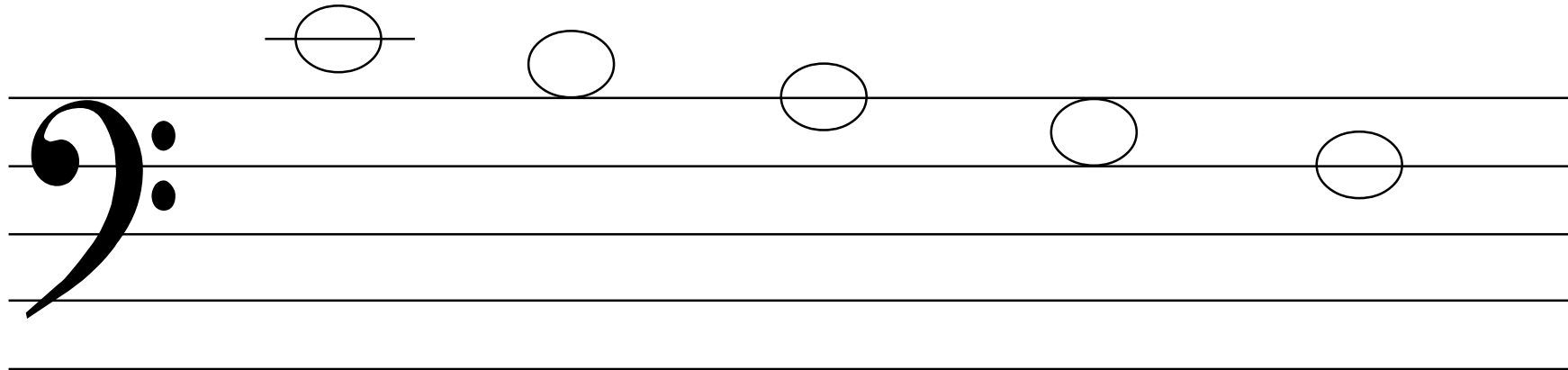


Keyboard Connections



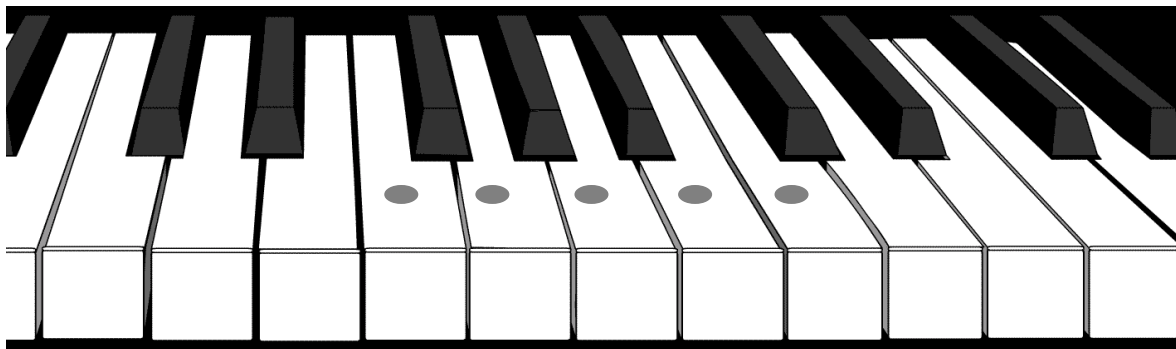
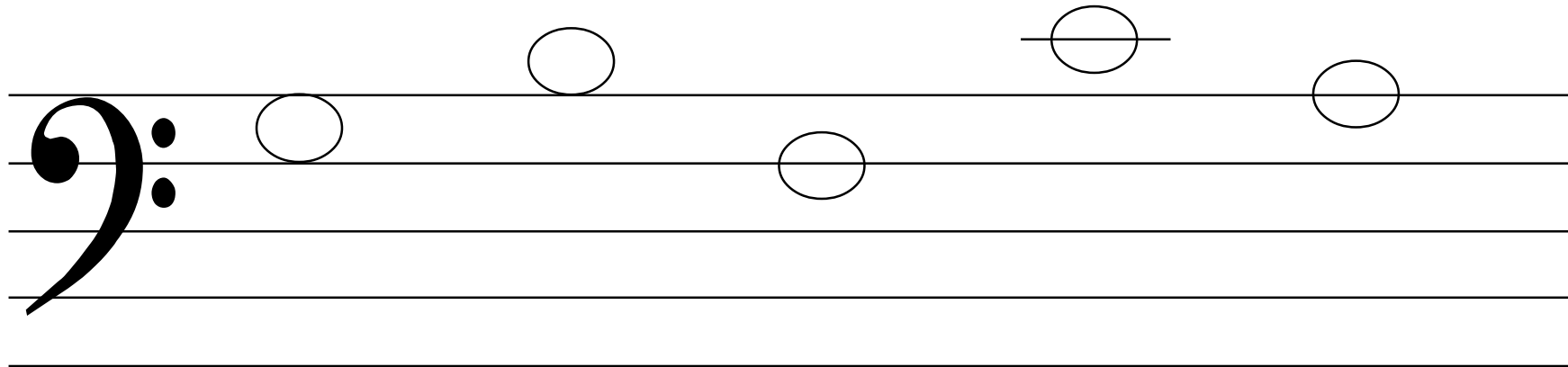


Keyboard Connections



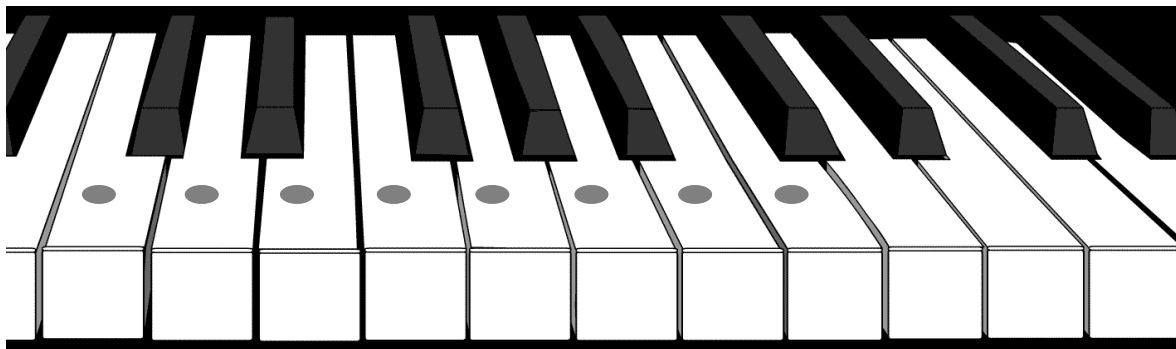
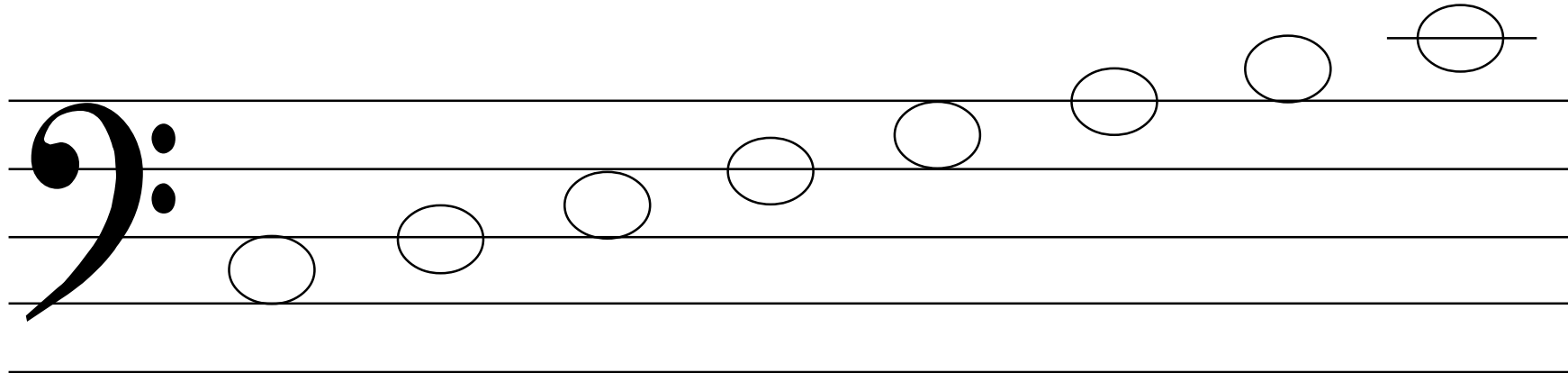


Keyboard Connections



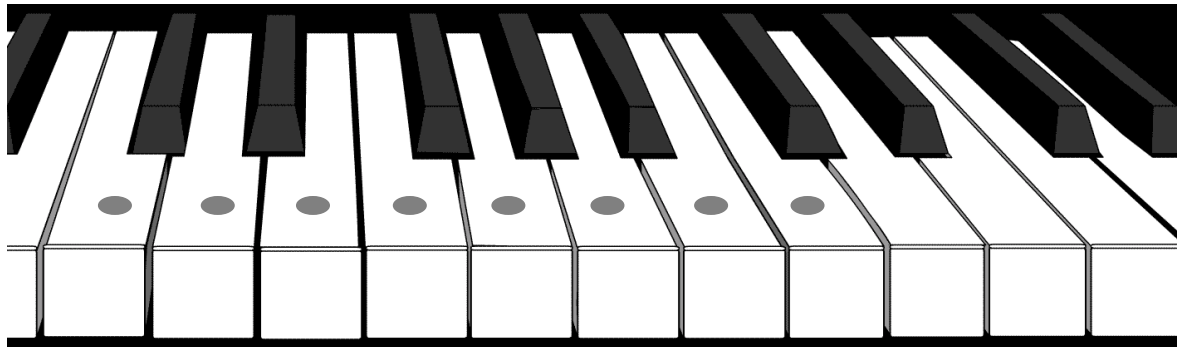
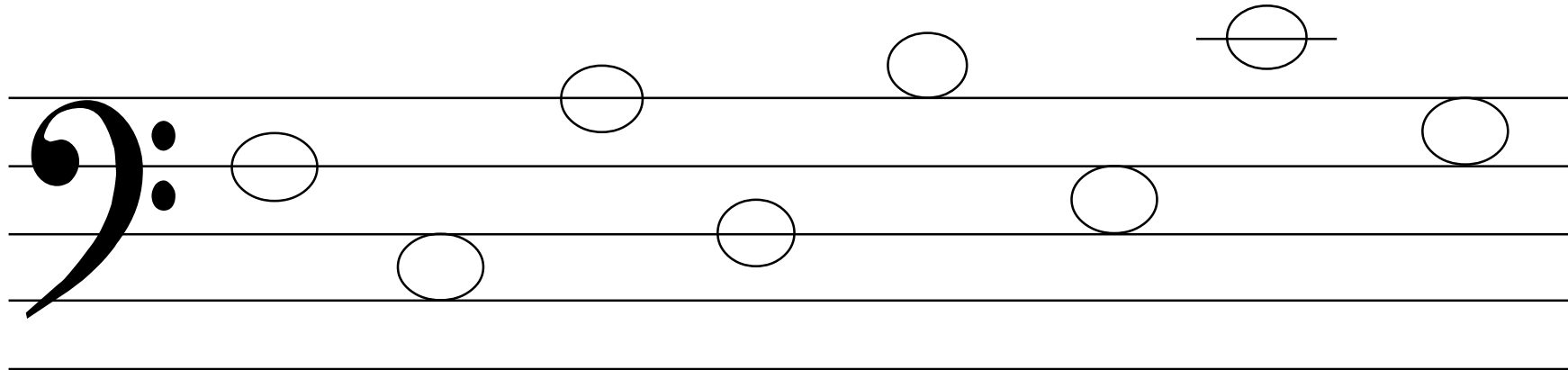


Keyboard Connections



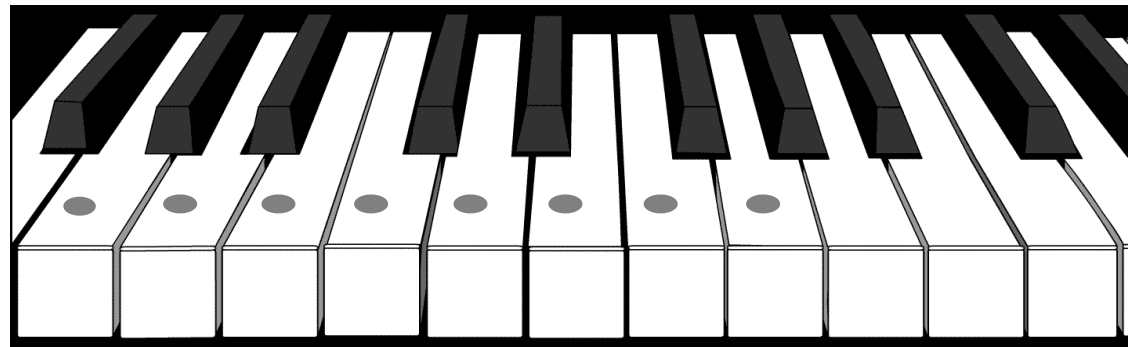
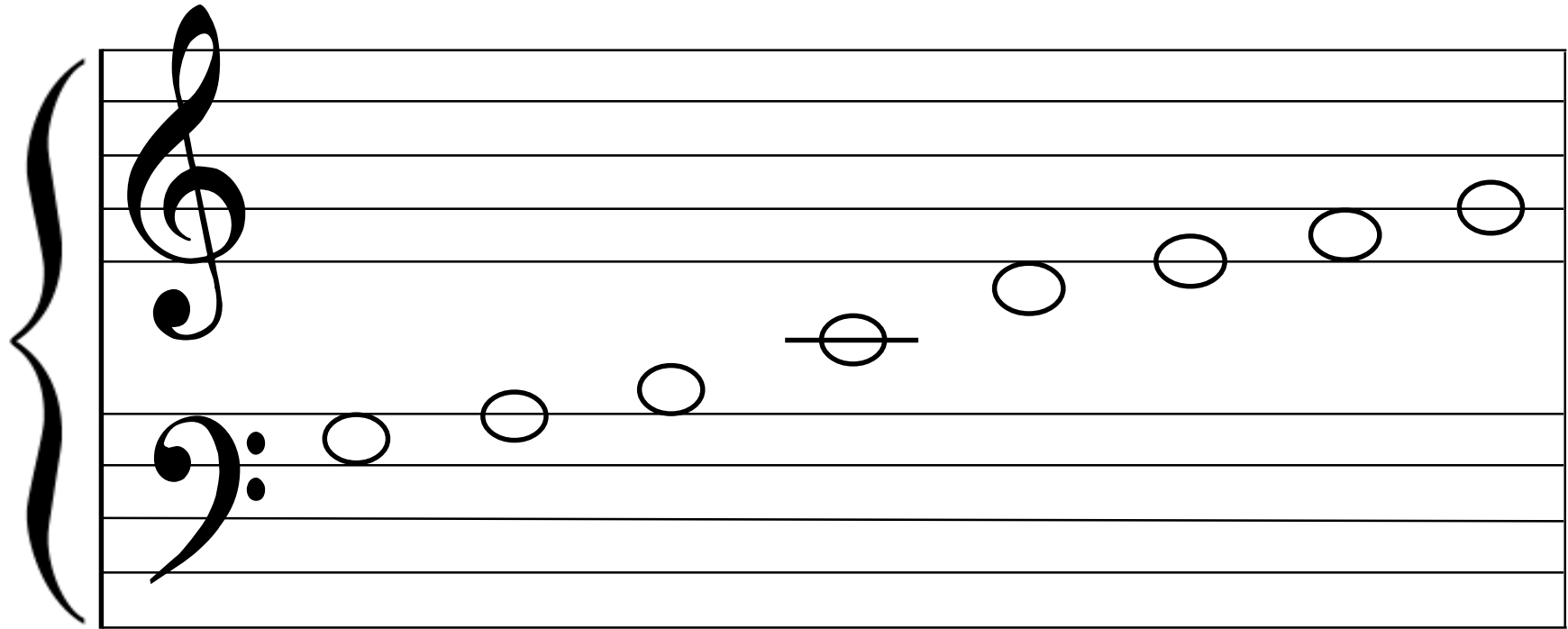


Keyboard Connections



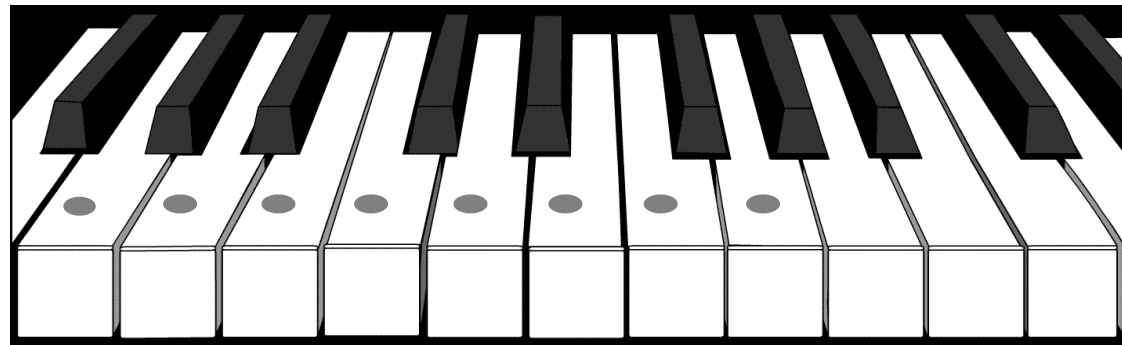
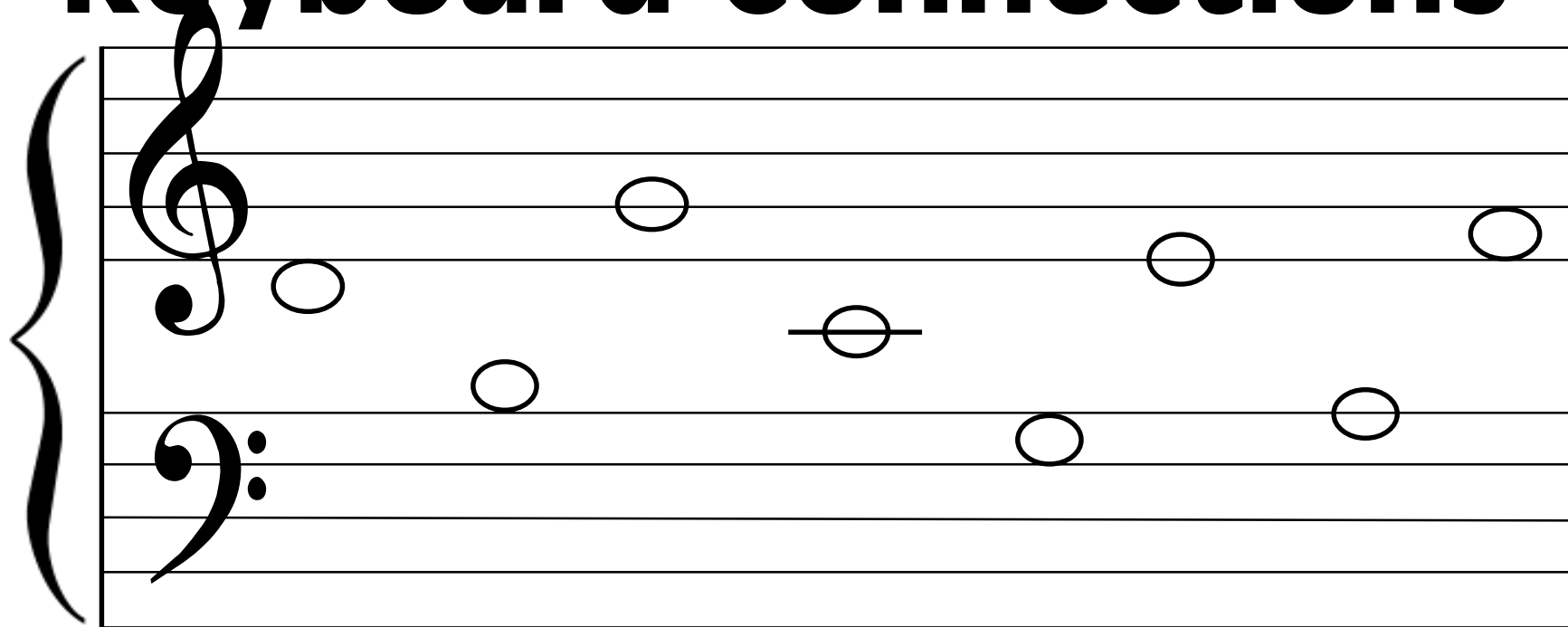


Keyboard Connections





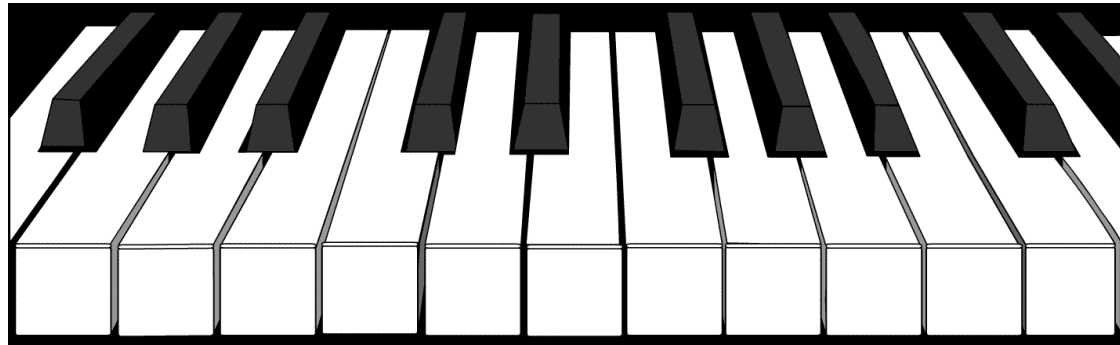
Keyboard Connections





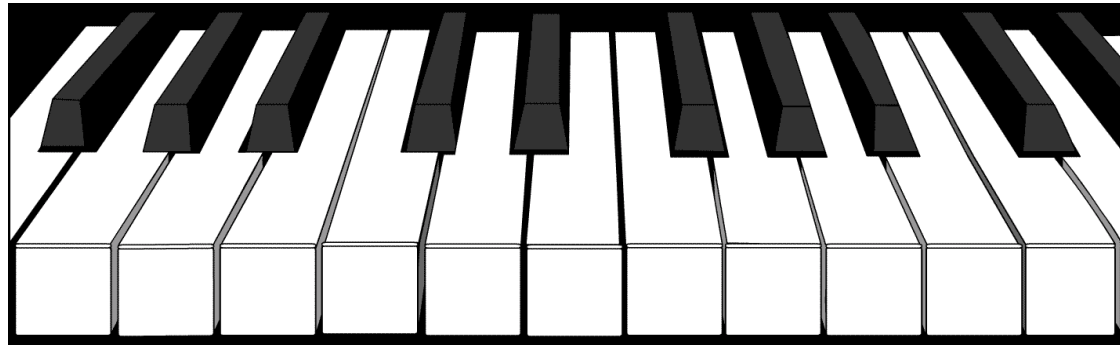
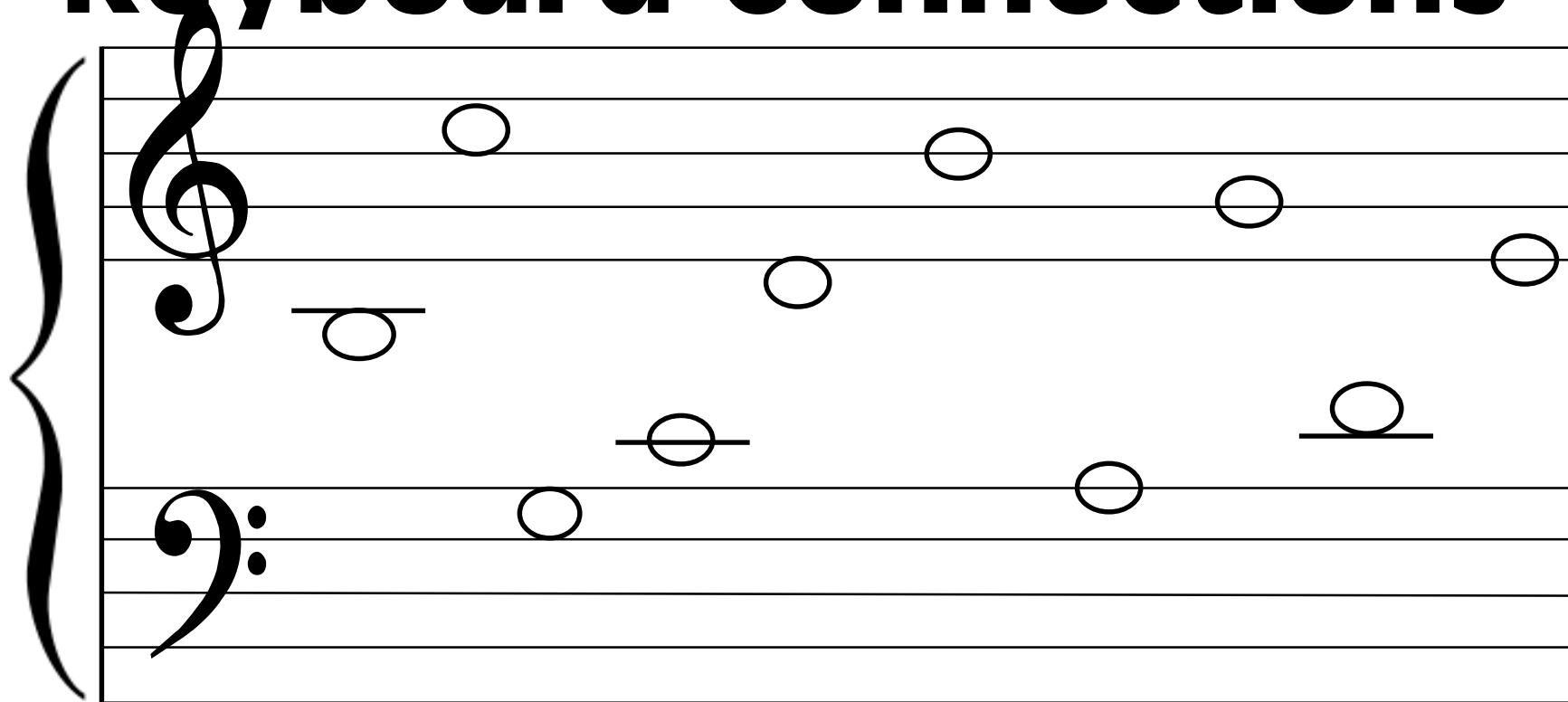
Keyboard Connections

A musical staff with a treble clef and a bass clef, connected by a large brace on the left. The treble clef staff contains a sequence of notes: a quarter note on G4, a quarter note on A4, a quarter note on B4, a quarter note on C5, a quarter note on D5, a quarter note on E5, a quarter note on F5, and a quarter note on G5. The bass clef staff is empty.





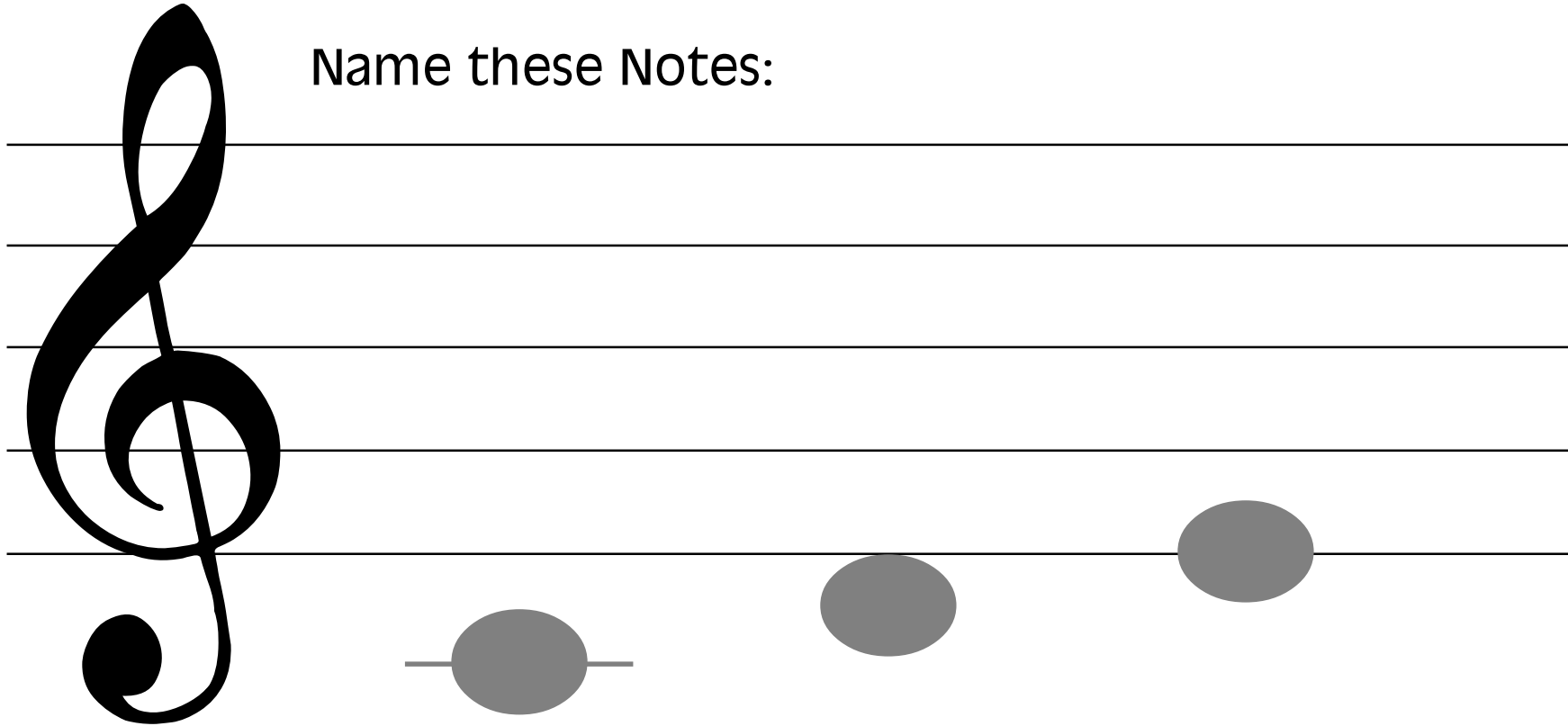
Keyboard Connections





Note Naming

Name these Notes:





Note Naming

Name these Notes:



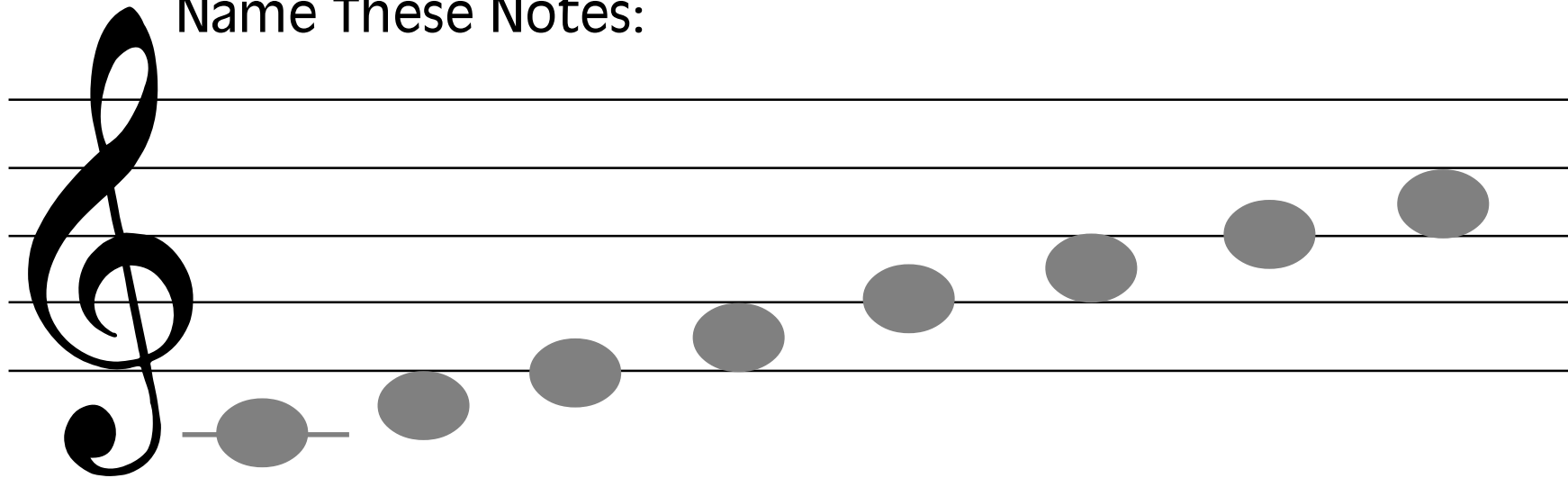
Note Naming

Name these Notes:



Note Naming

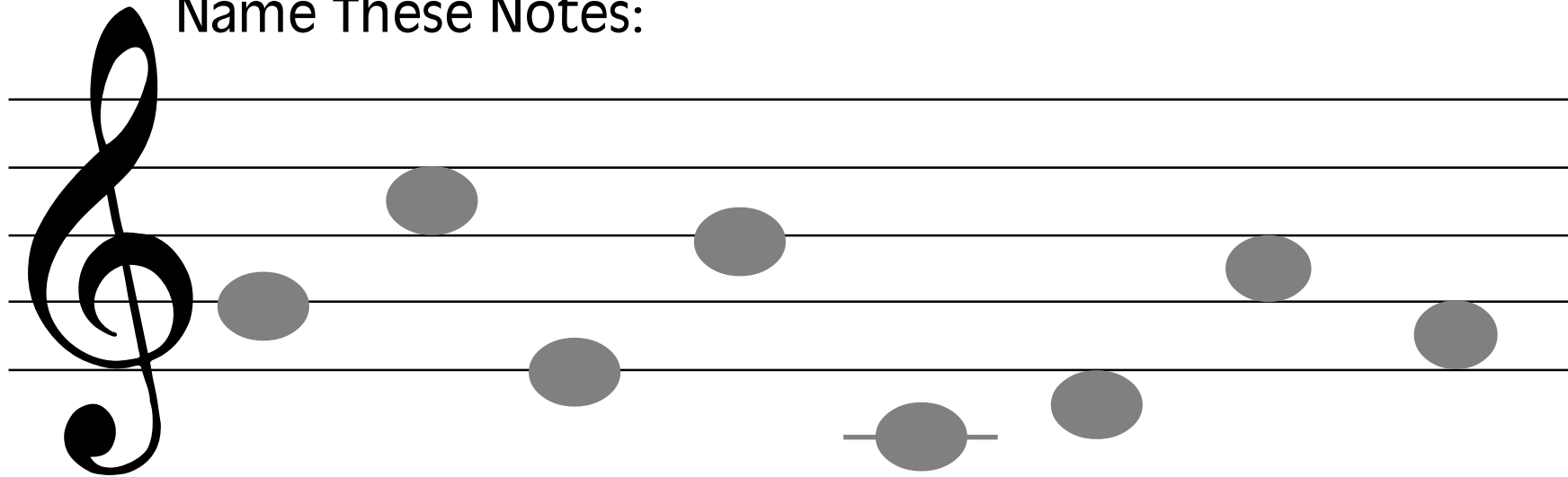
Name These Notes:





Note Naming

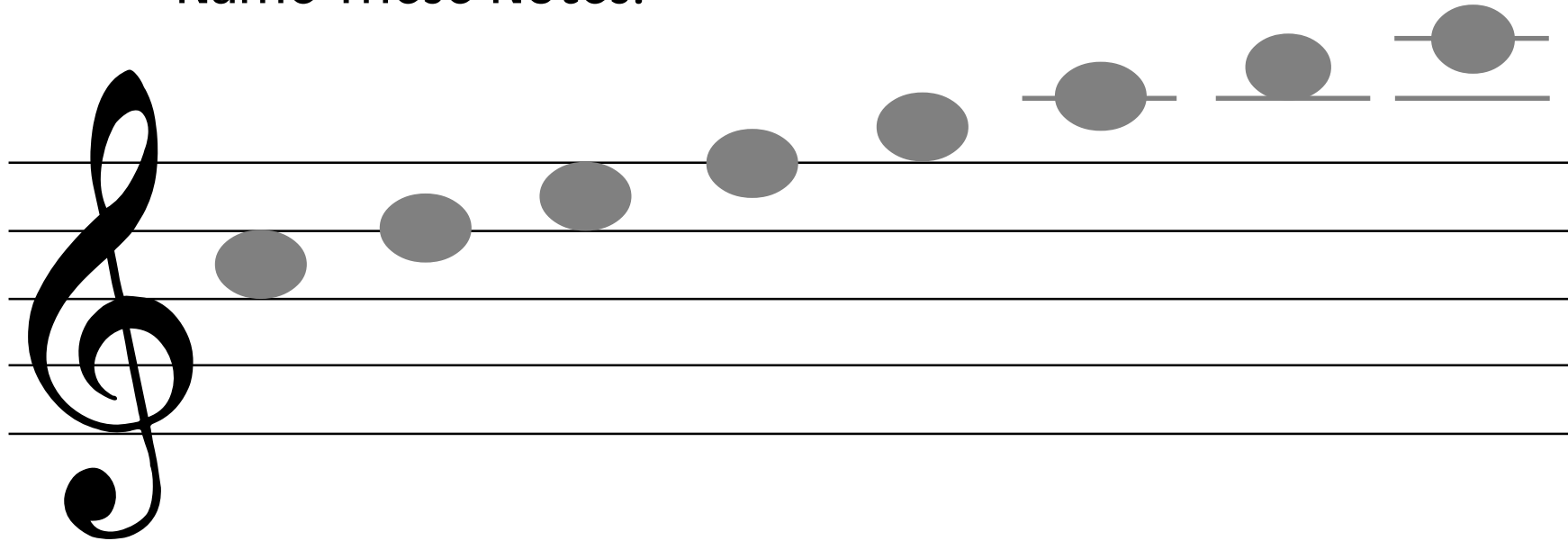
Name These Notes:





Note Naming

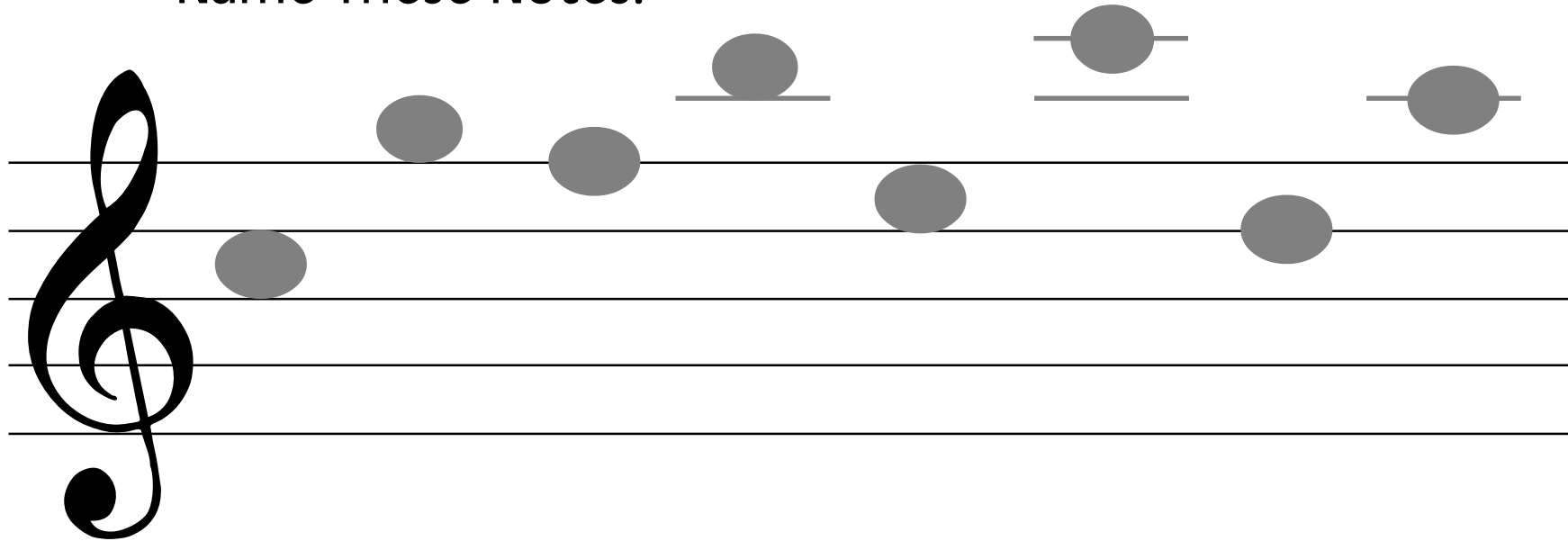
Name These Notes:





Note Naming

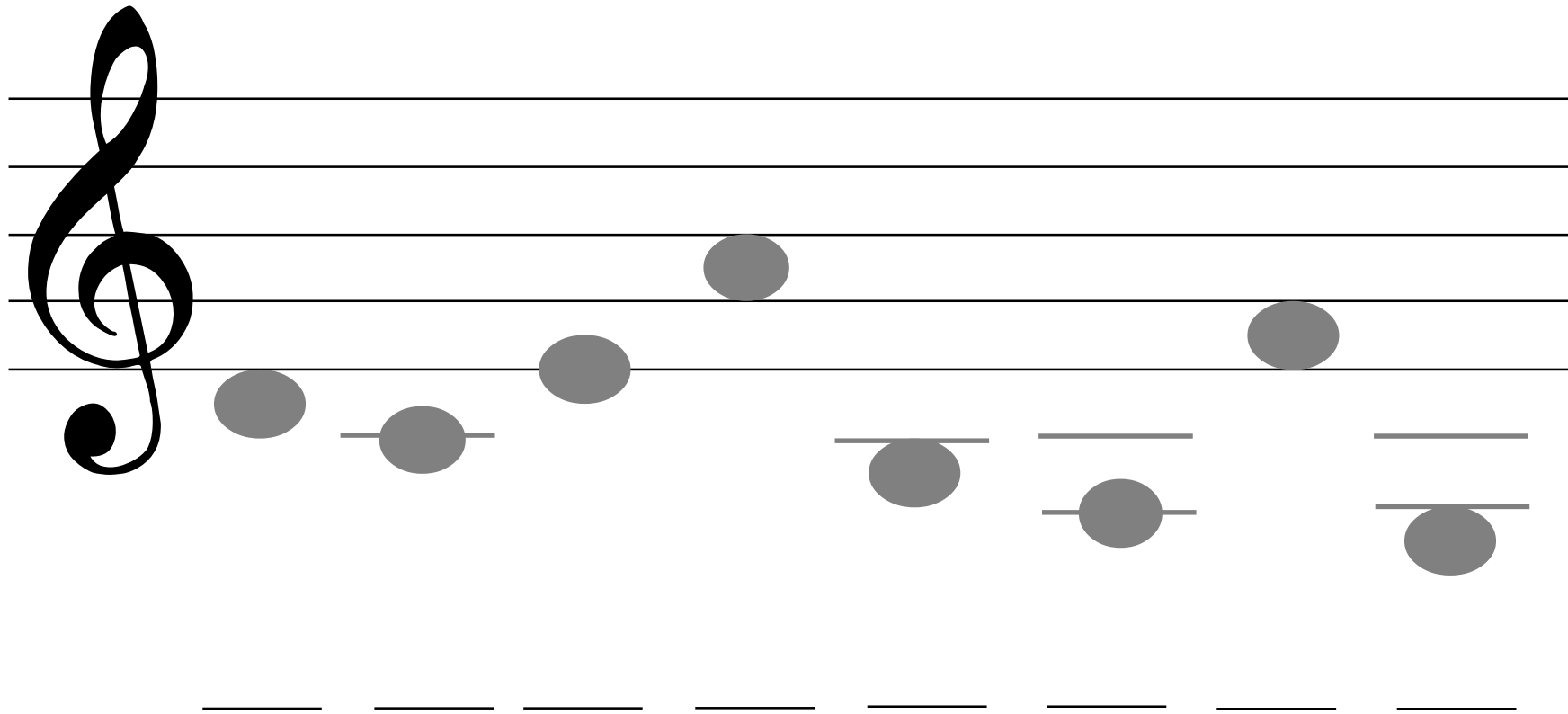
Name These Notes:





Note Naming

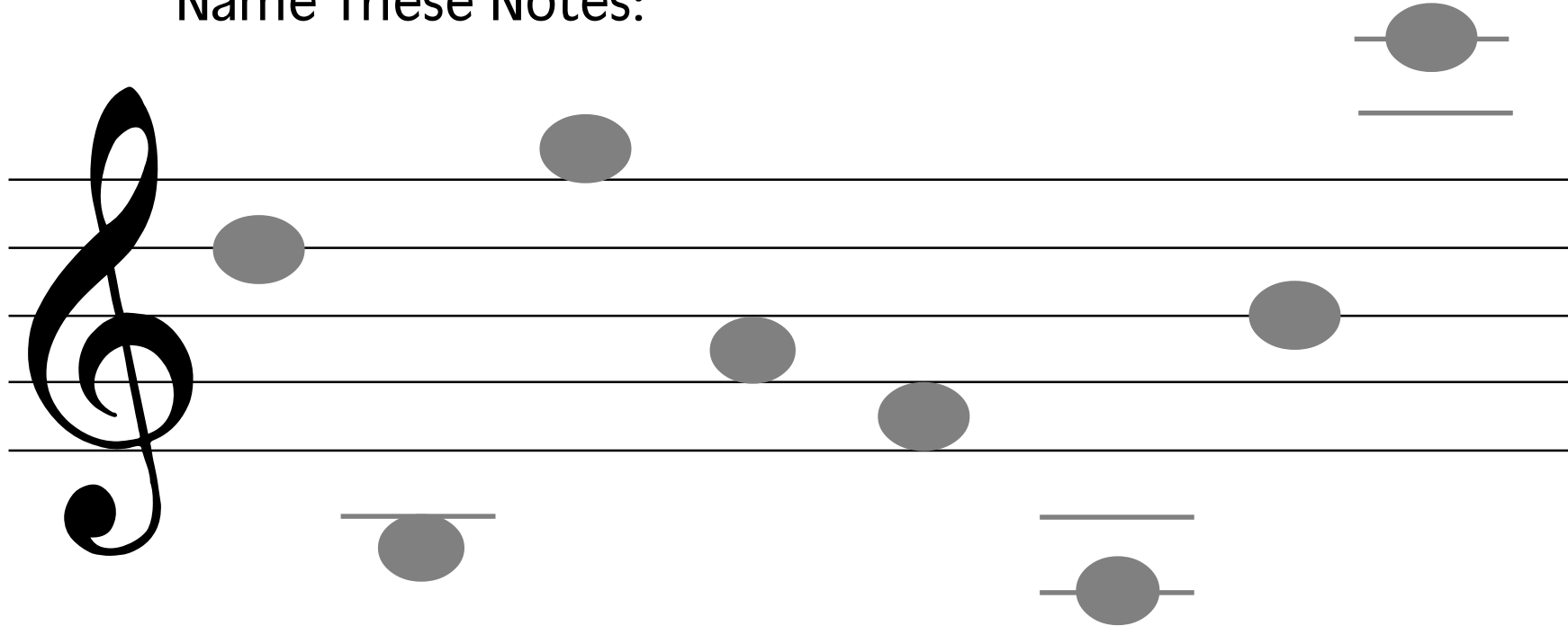
Name These Notes:





Note Naming

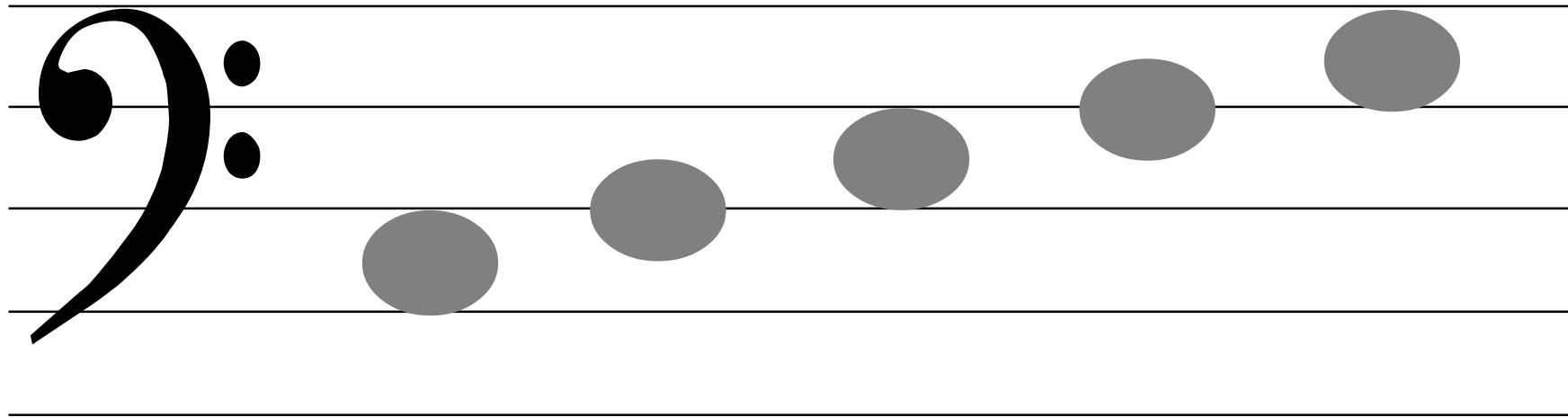
Name These Notes:





Note Naming

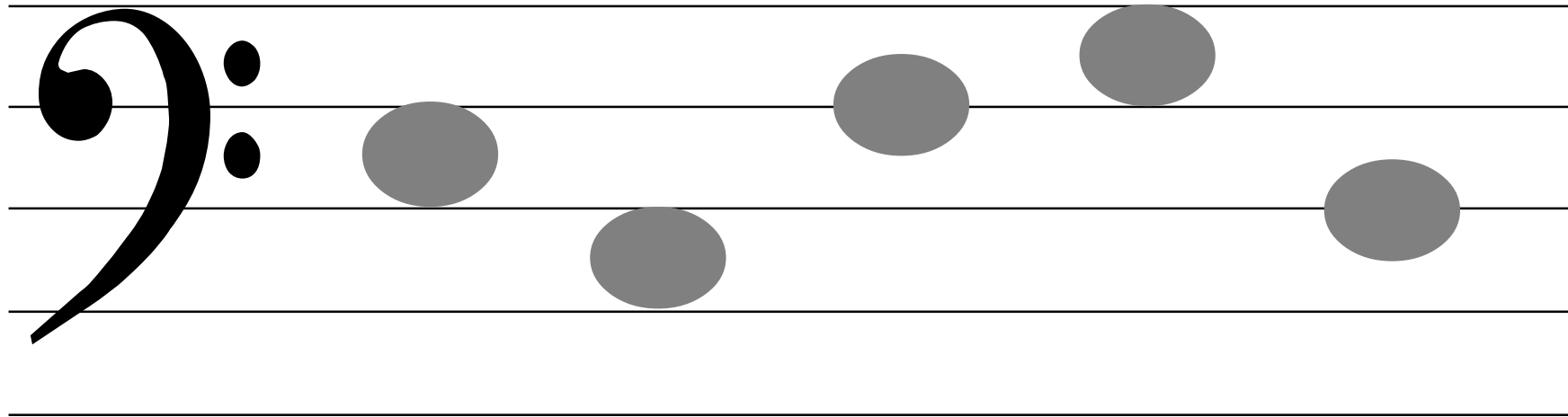
Name these Notes:





Note Naming

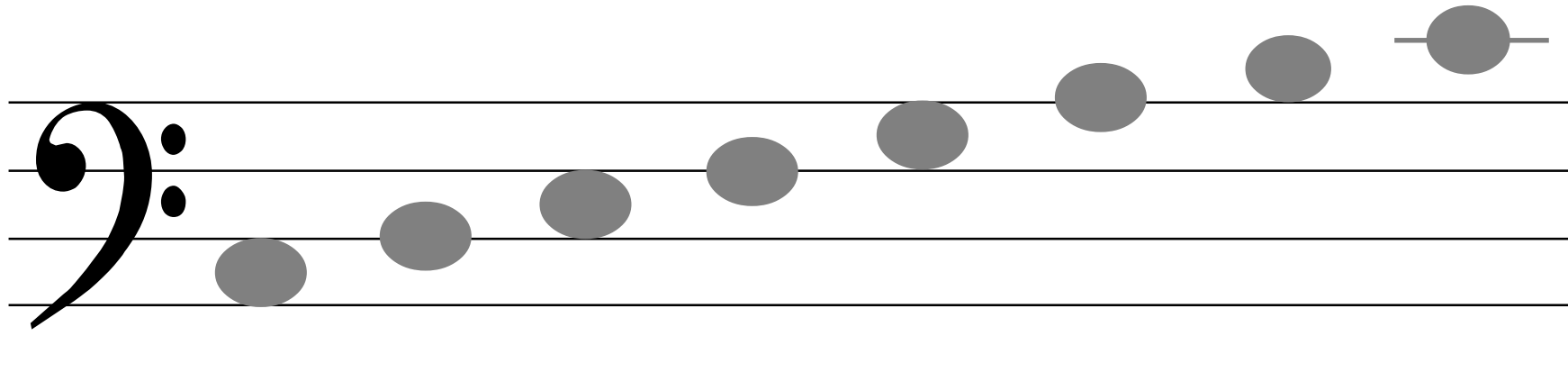
Name these Notes:





Note Naming

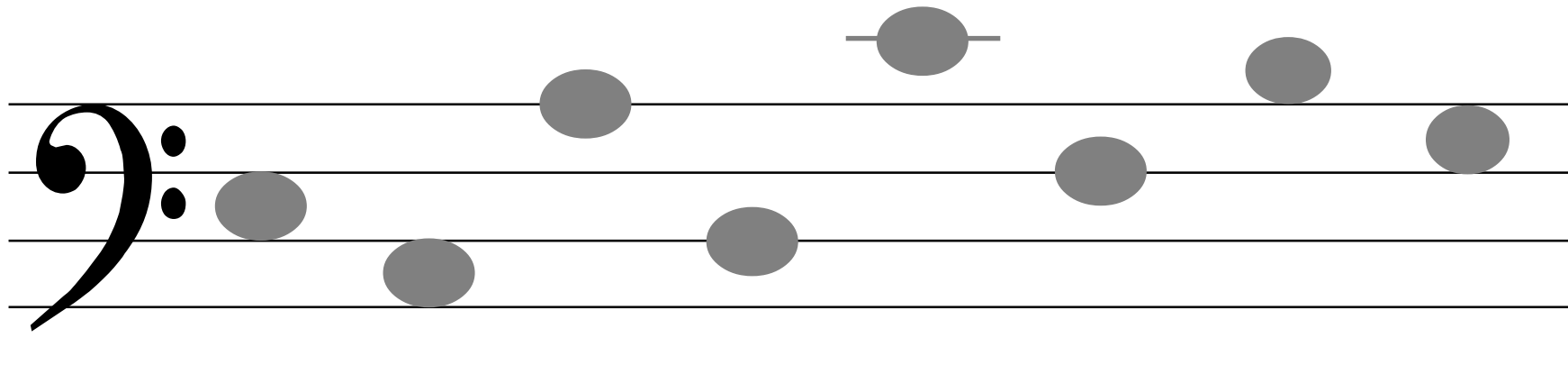
Name These Notes:



Note Naming



Name These Notes:



Note Naming



Name These Notes:

A musical staff with a bass clef on the left. Eight grey circular notes are placed on the staff at the following positions: first space, second space, second line, third space, third line, fourth space, fourth line, and fifth space.



Note Naming

Name These Notes:

Note Naming



Name These Notes:

