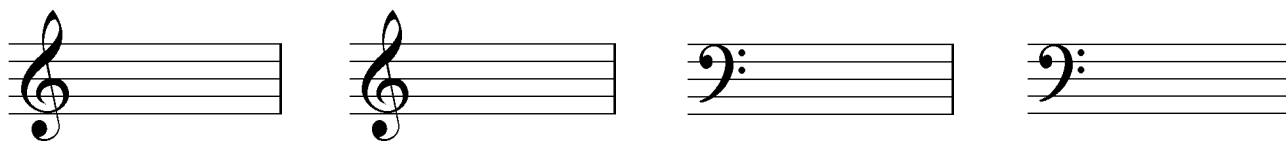
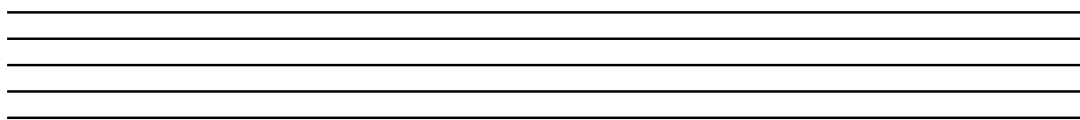


The G Major Scale

Draw the key signature of G major in the treble and bass:



Write the scale of G major in the treble clef then mark the half steps with a bracket like $\lceil \square \rceil$:



Write the scale of G major in the bass clef then mark the half steps:



Ascending or Descending Scales

Scales can be written ascending or descending. The half steps are still between the 3rd and 4th and 7th and 8th degrees, counting from the bottom

G major scale ascending



G major scale descending



Write the scale of G major in the treble clef, one octave descending, then mark the half steps:



Write the scale of G major in the bass clef, one octave descending, then mark the half steps:

