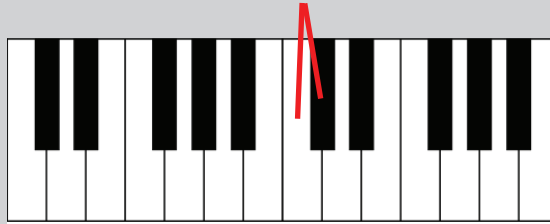
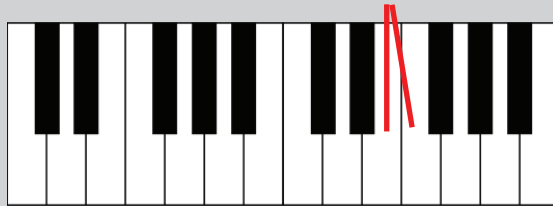


Half Steps

On a piano keyboard, a half step is the *smallest distance possible* between two neighbouring notes for example, C to C sharp is a half step



and E to F is a half step, because it has no black note between



Half steps are sometimes called *semitones*

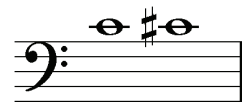
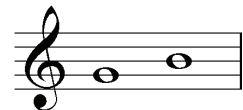
What note is a half step higher than G? _____

What note is a half step lower than E? _____

What note is a half step higher than B? _____

What note is a half step lower than F? _____

Circle the half steps:



Circle the higher note in each of these examples:



Circle the half steps in this melody:

for example:

