

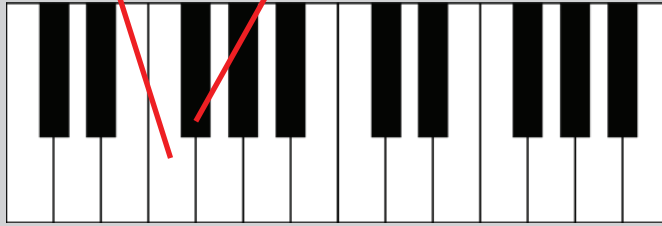
# Sharps and Flats

The sharp sign means you raise the pitch of the note by one half step

For example:

This is F: and this is F *sharp*

The Sharp

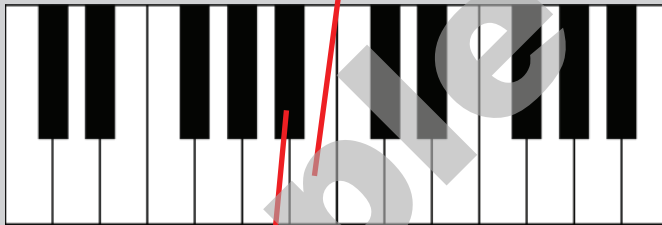


The flat means you lower the pitch of a note by one half step

For example:

This is B:

The Flat

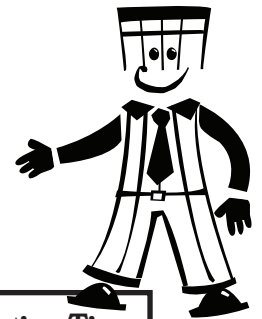


and this is B *flat*

Practice drawing sharps:



Practice drawing flats:



## Music Notation Tip

When drawing sharps and flats, it is important to remember that the line or space to which they apply must go through the centre (the white space) of the sharp or flat.

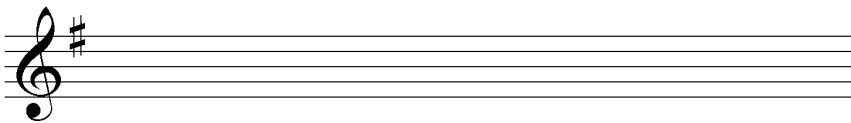
For example  
Correct:



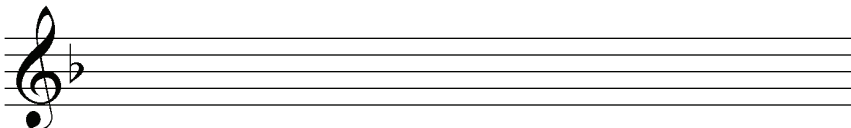
Incorrect:



Copy sharps along the top line of this treble staff:



Copy flats along the middle line of this treble staff:



Sample Worksheet from "Printable Music Theory Books" from the Fun Music Company

[Download a free printable and watermark free version](#)